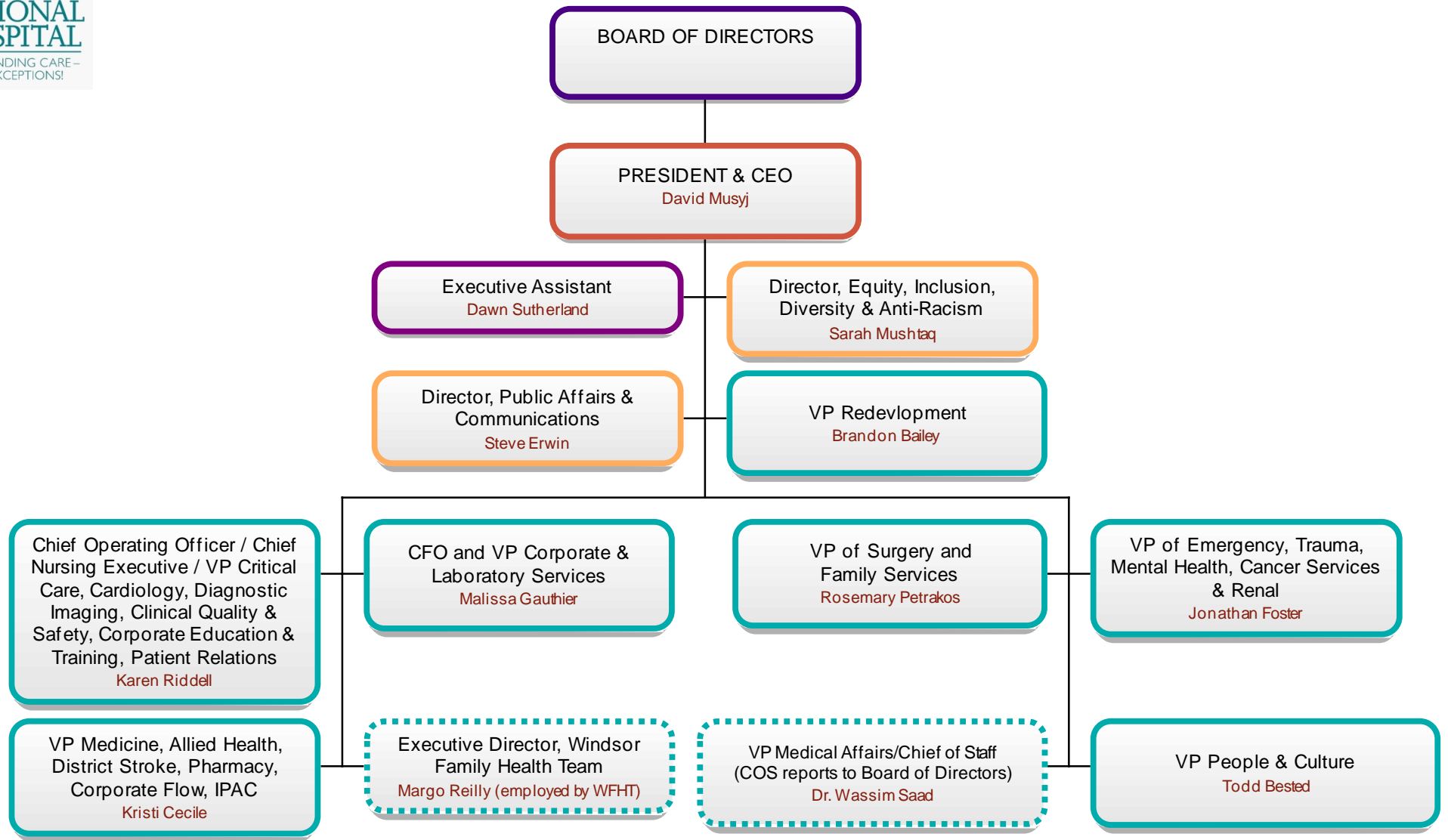


# Reporting to President & CEO

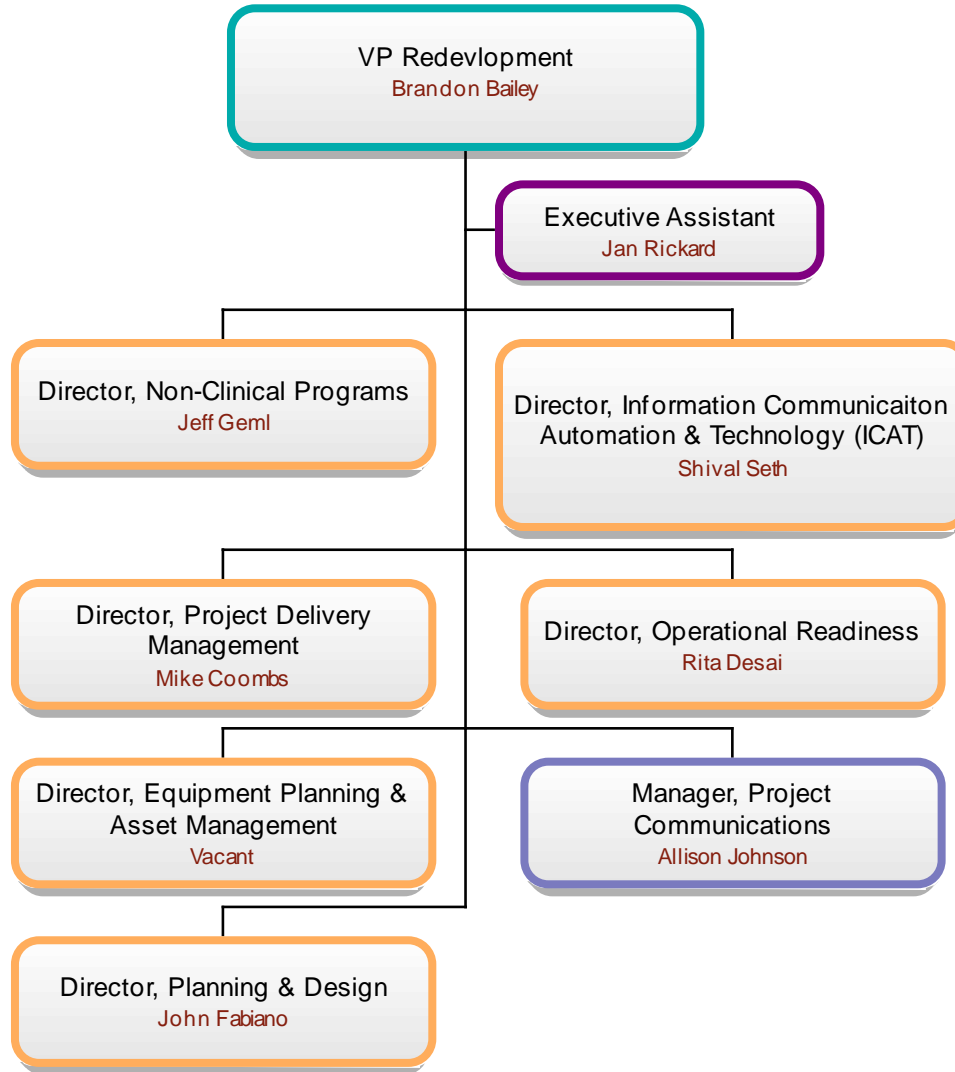


----- Shared positions

# Director, Public Affairs, & Communications

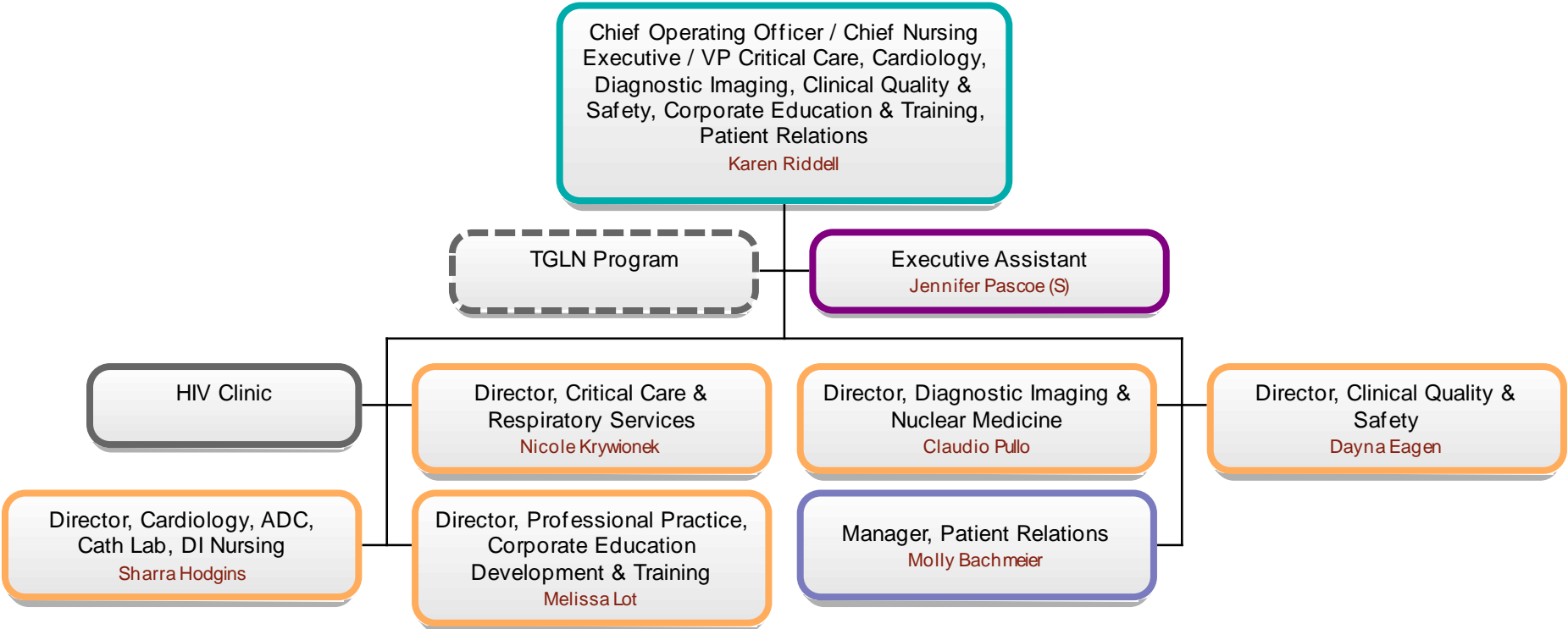


# Vice President, Redevelopment

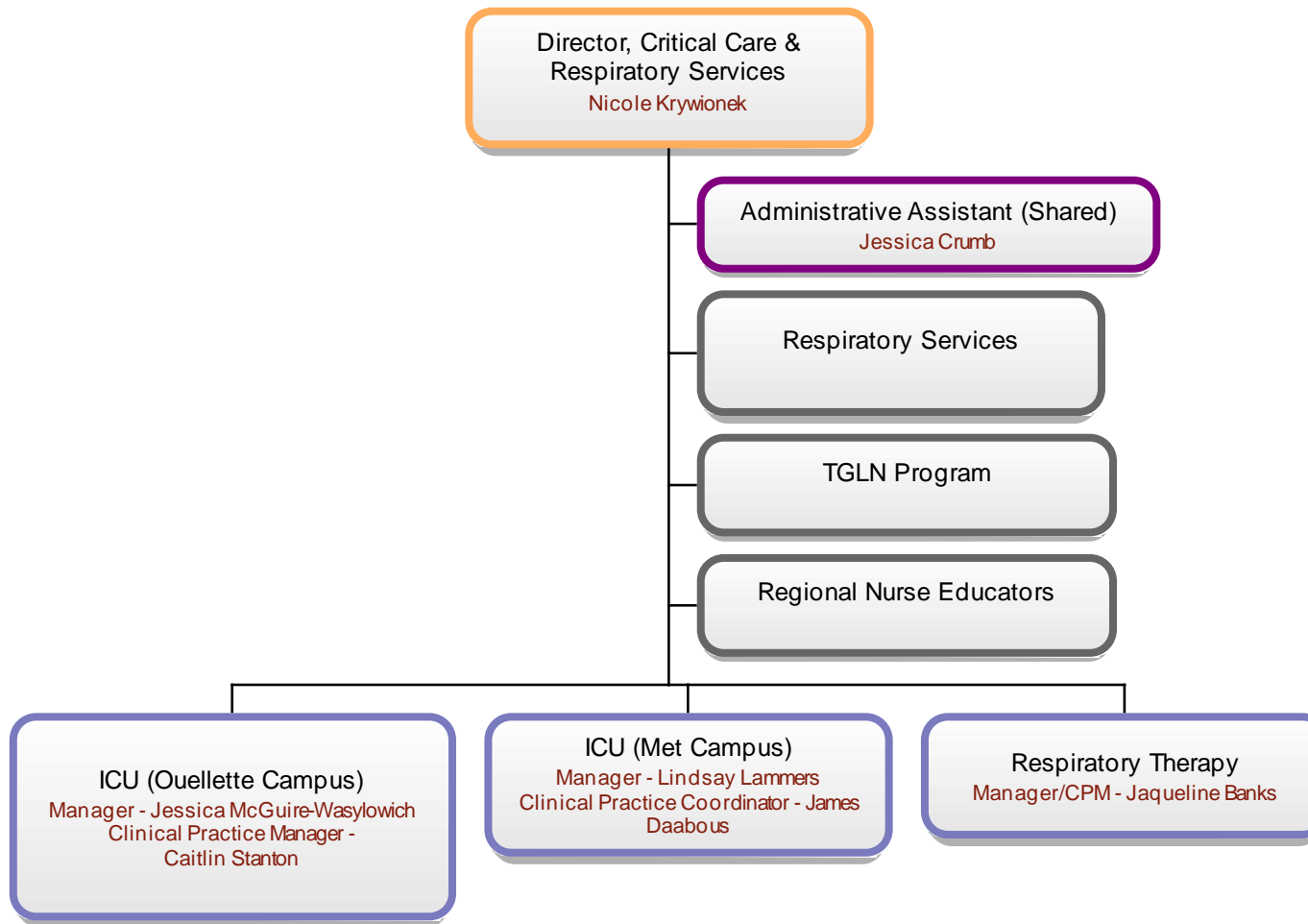




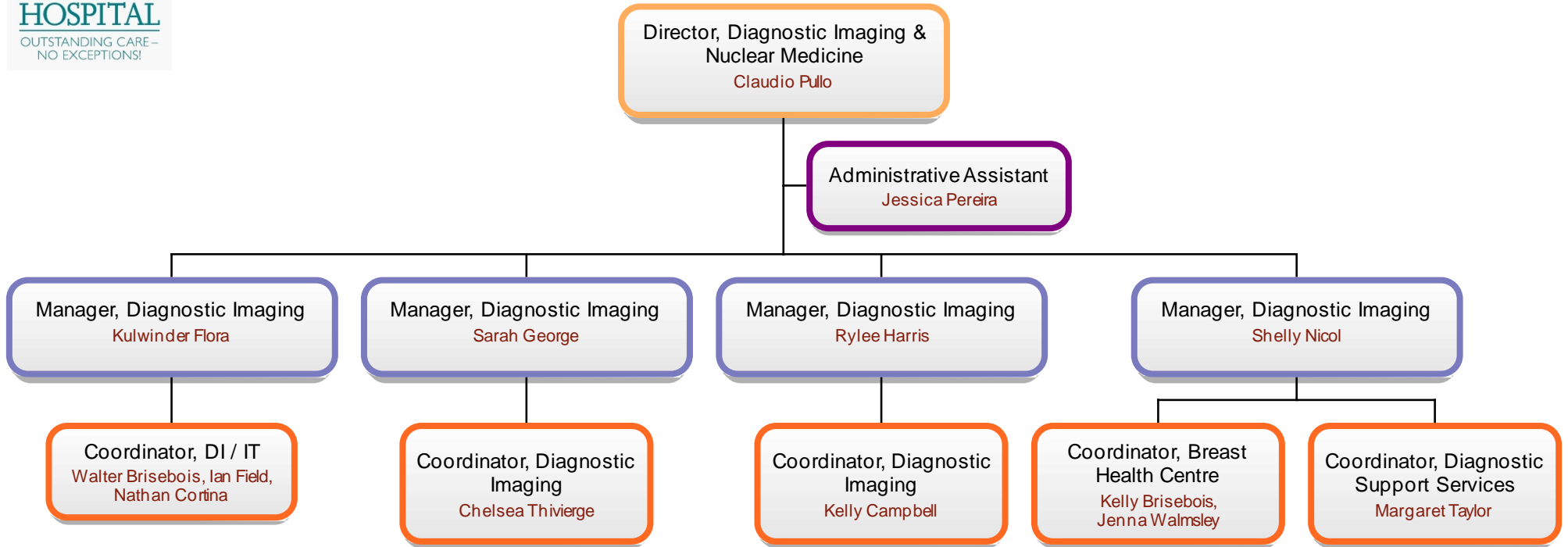
# Chief Operating Officer / Chief Nursing Executive / VP Critical Care, Cardiology, Diagnostic Services, Clinical Quality & Safety, Corporate Education & Training, Patient Relations



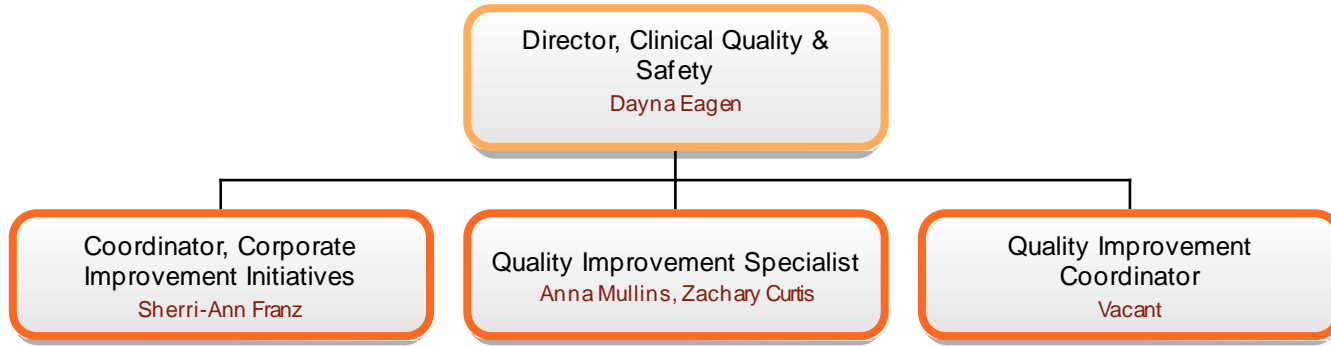
# Director, Critical Care & Respiratory Services



# Director, Diagnostic Imaging & Nuclear Medicine

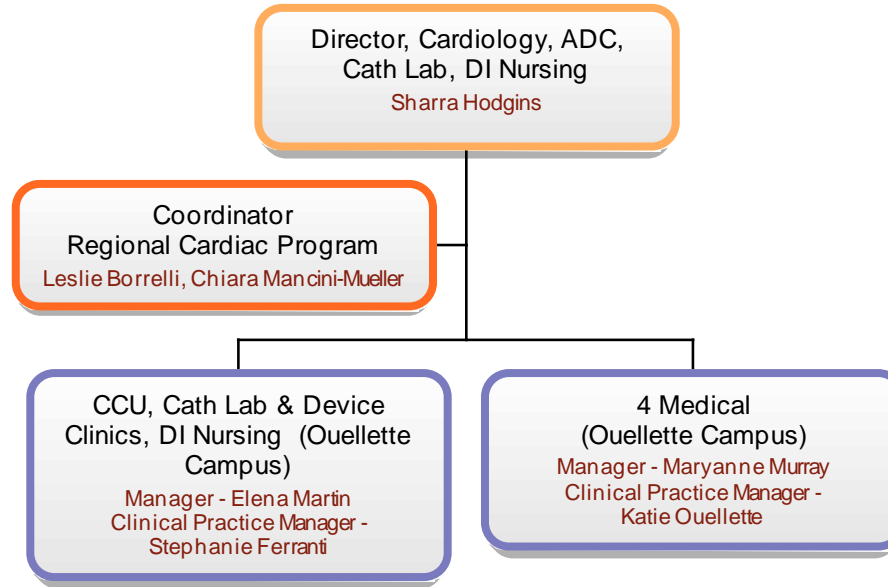


# Director, Clinical Quality & Safety





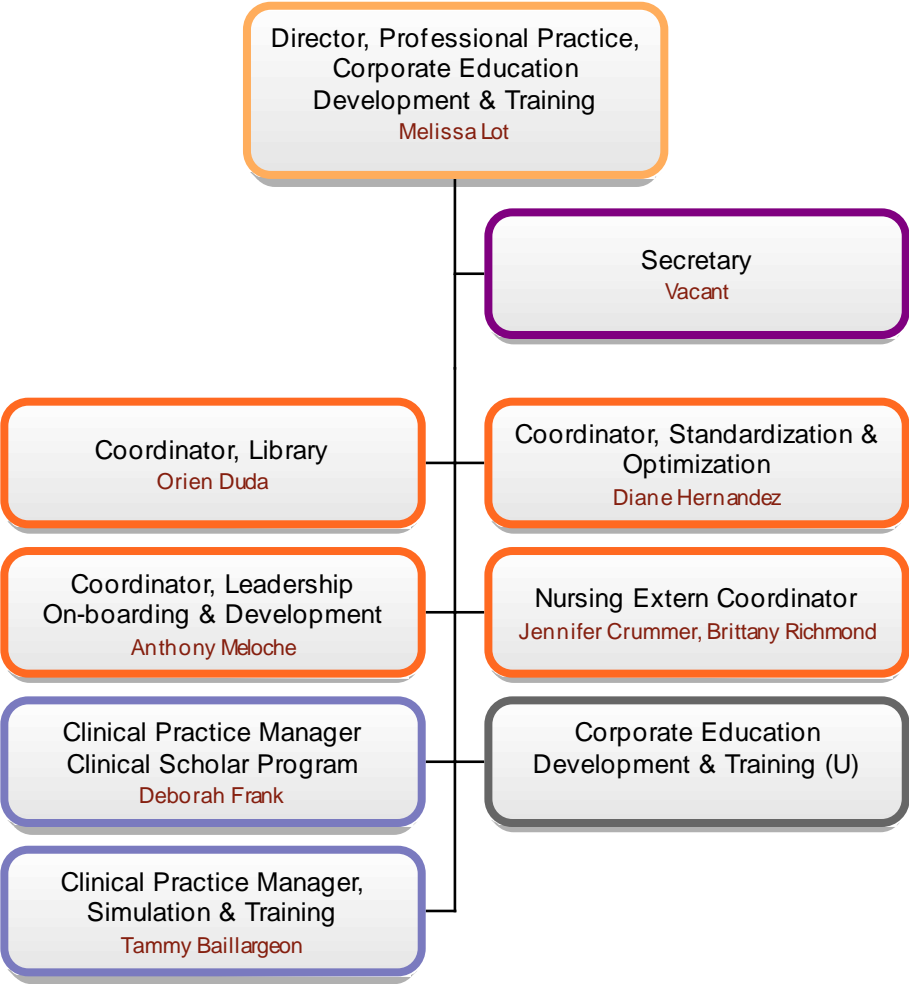
# Director, Cardiology, ADC, Cath Lab, DI Nursing



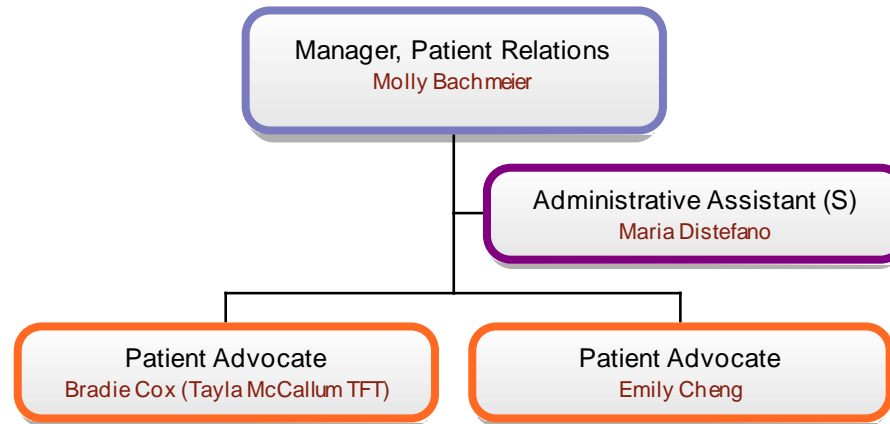




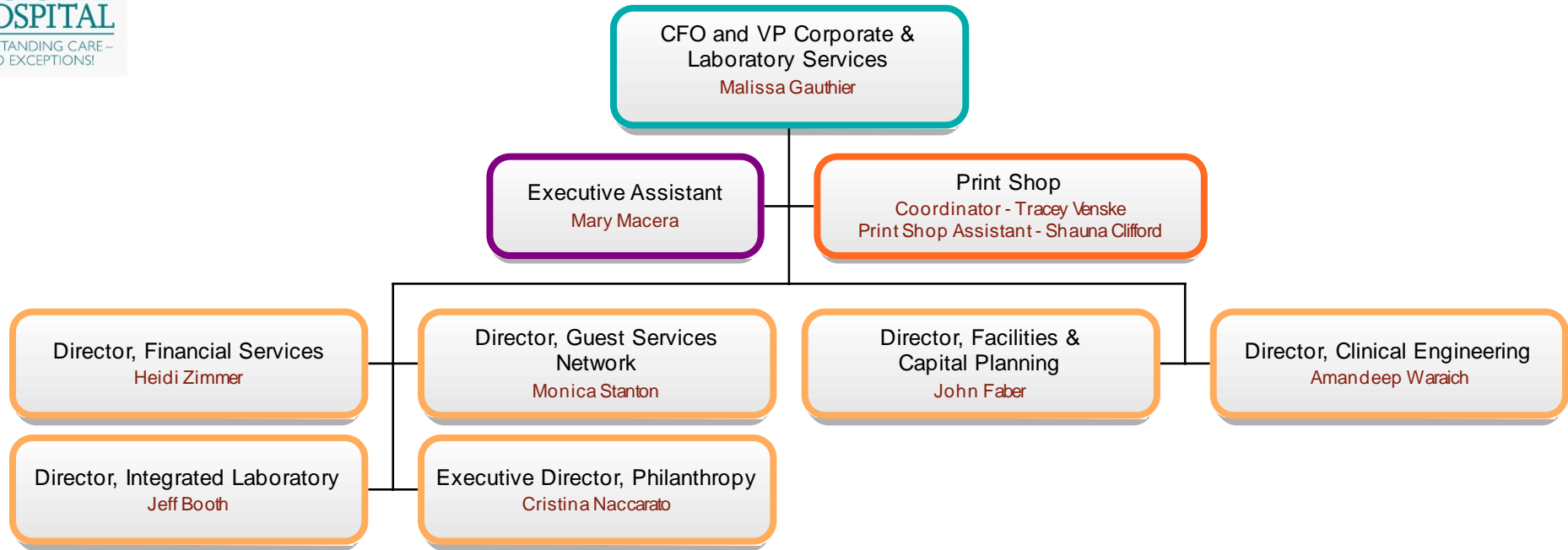
# Director, Professional Practice, Corporate Education Development & Training



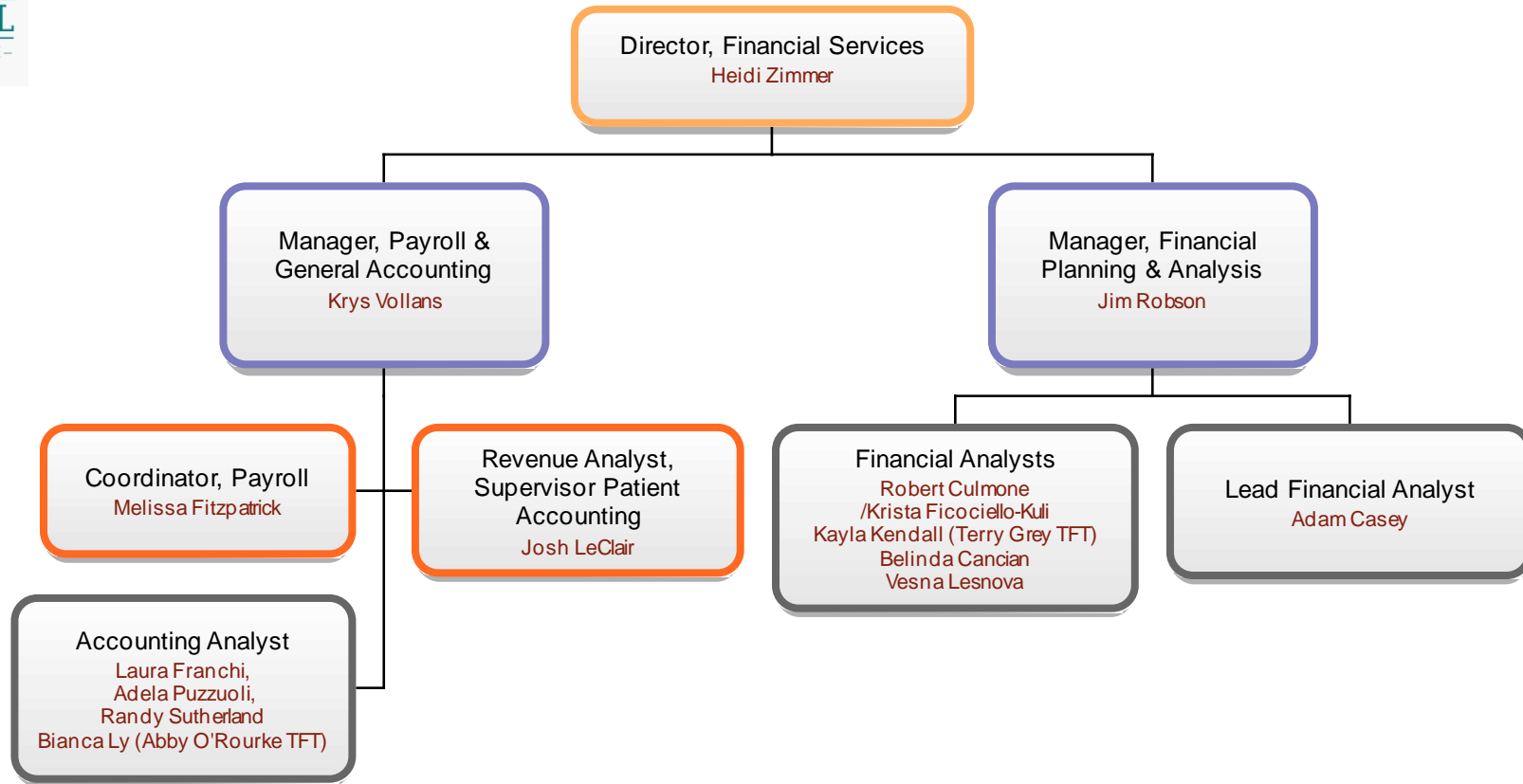
# Manager, Patient Relations



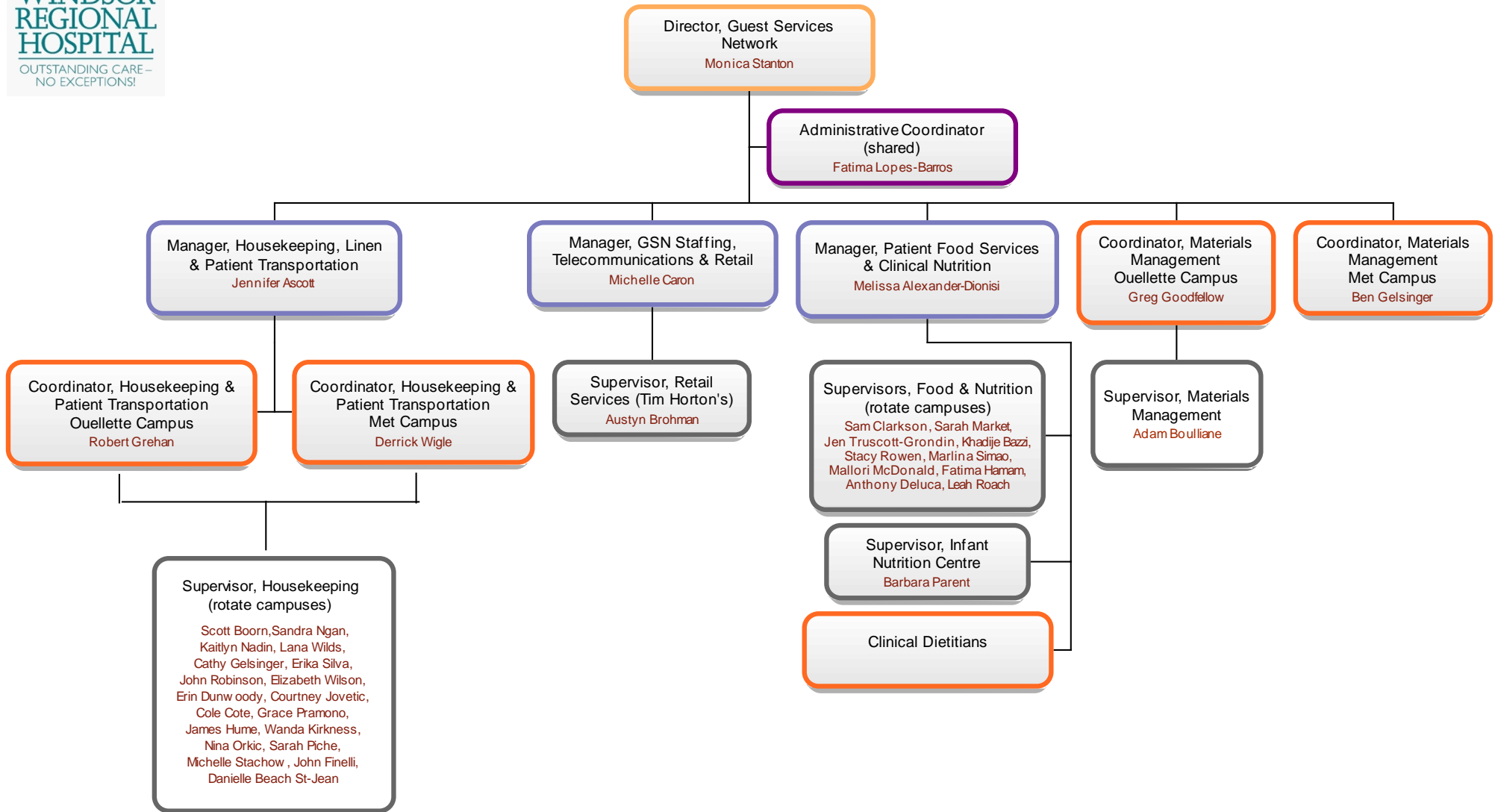
# CFO & Vice-President Corporate & Laboratory Services



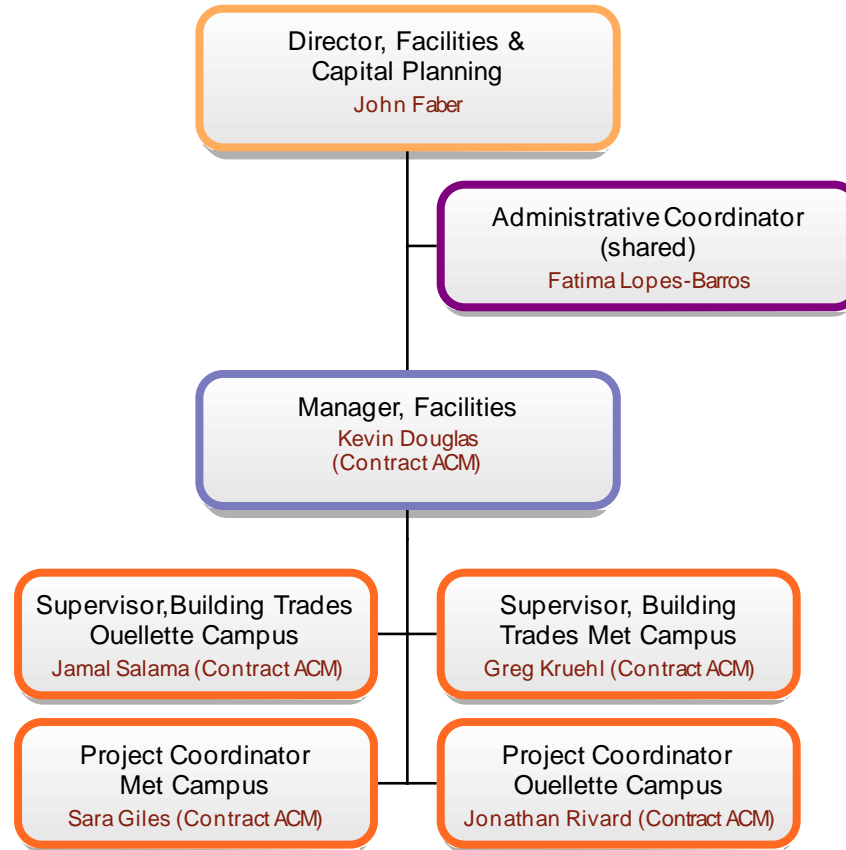
# Director, Financial Services



# Director, Guest Services Network

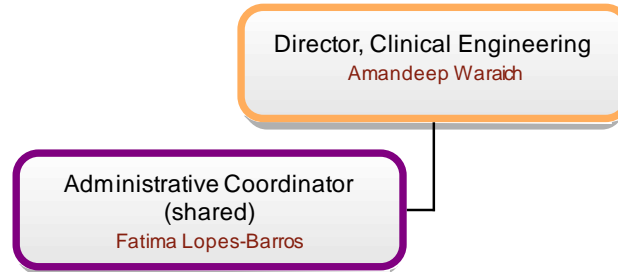


# Director, Facilities & Capital Planning

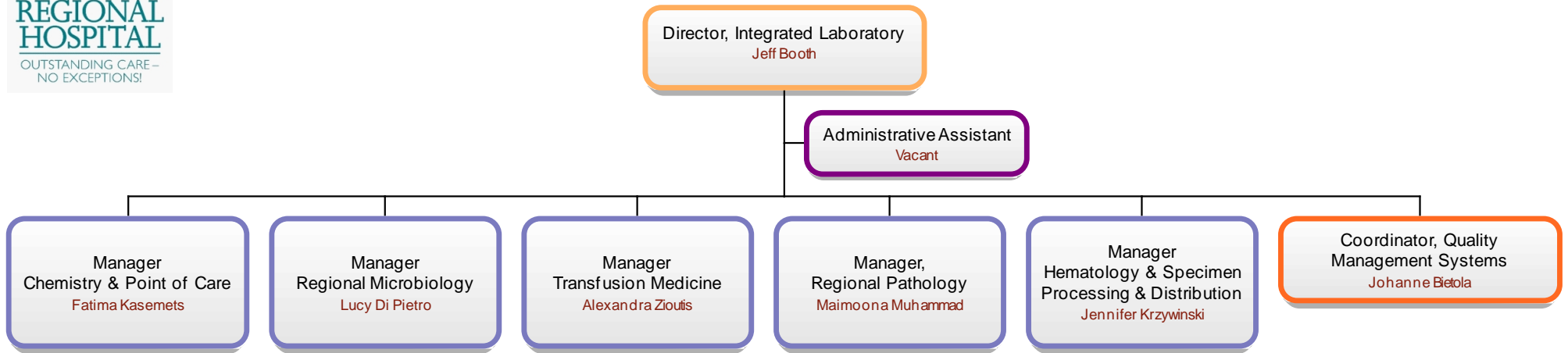




# Director, Clinical Engineering

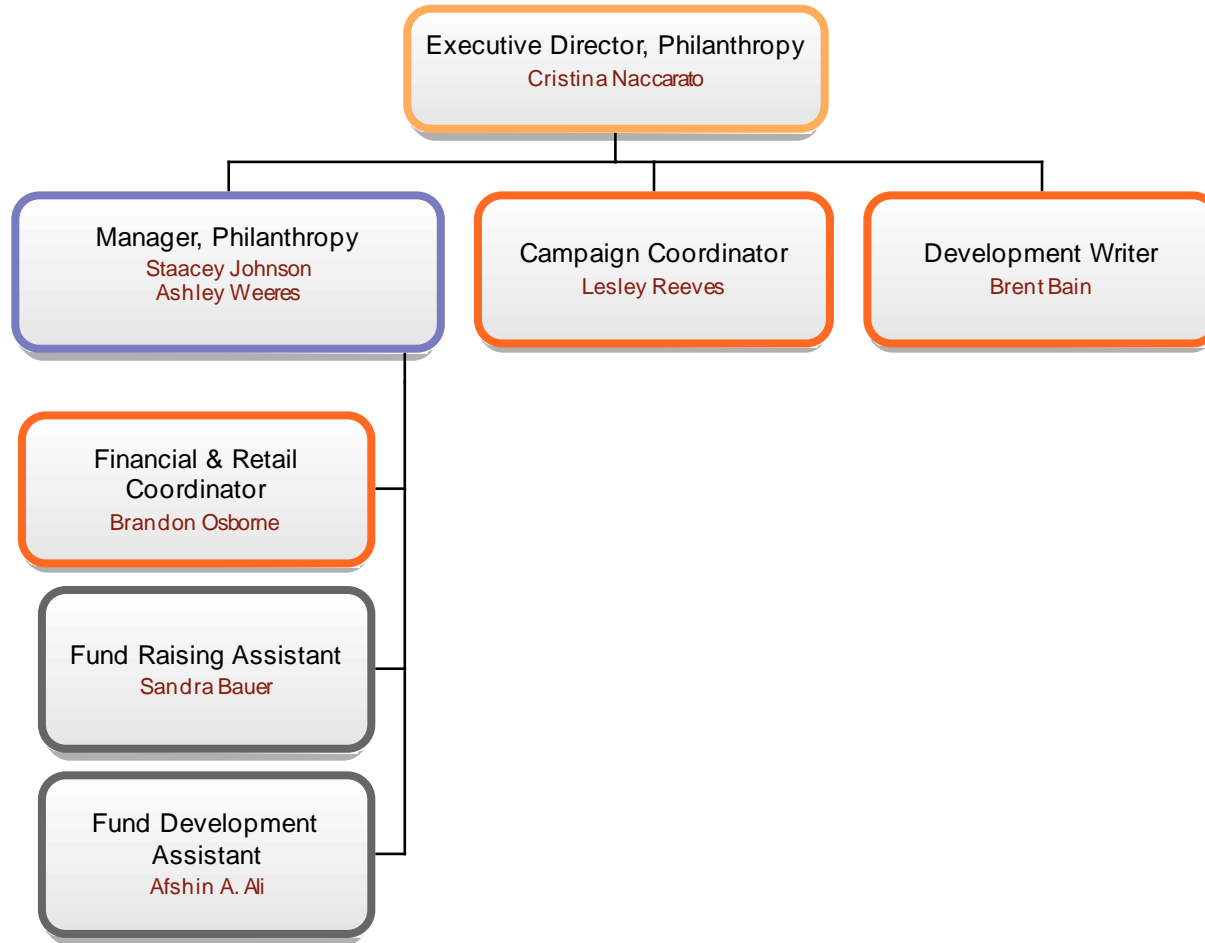


# Director, Integrated Laboratory

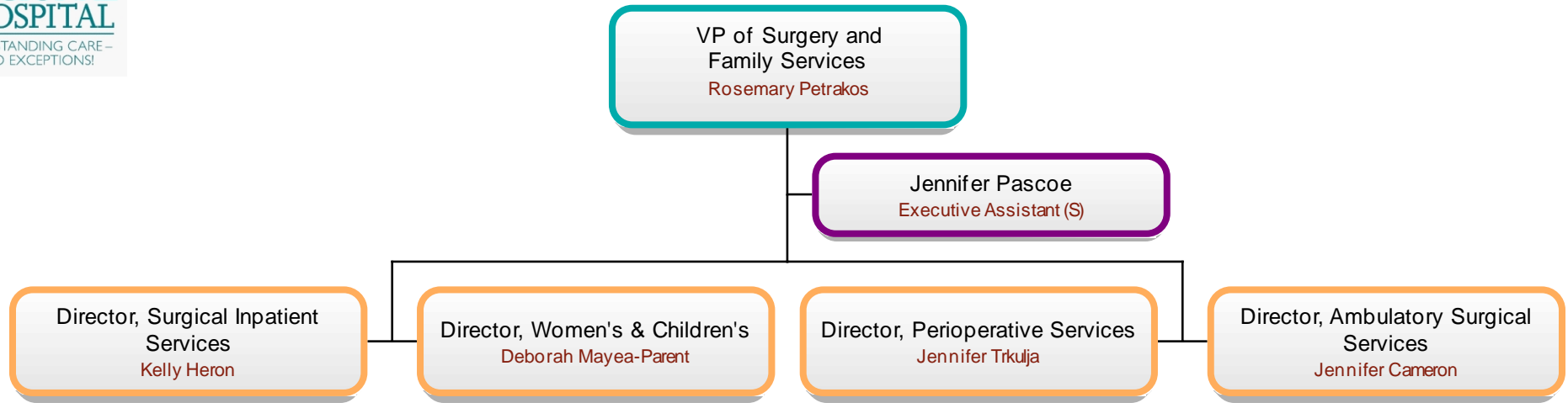




# Executive Director, Philanthropy



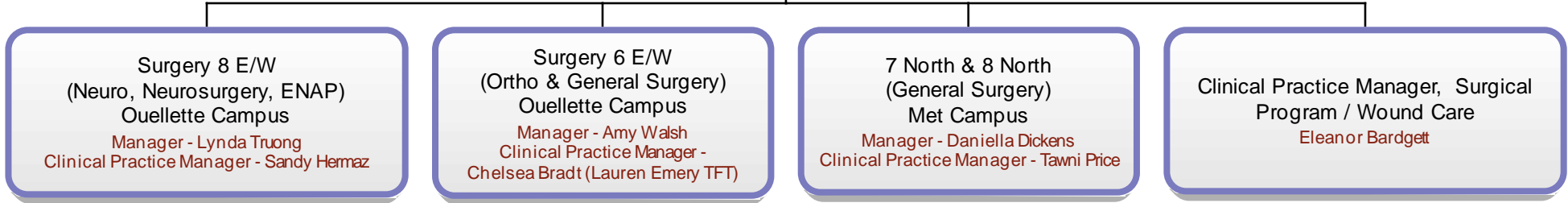
# Vice-President, Surgery and Family Services



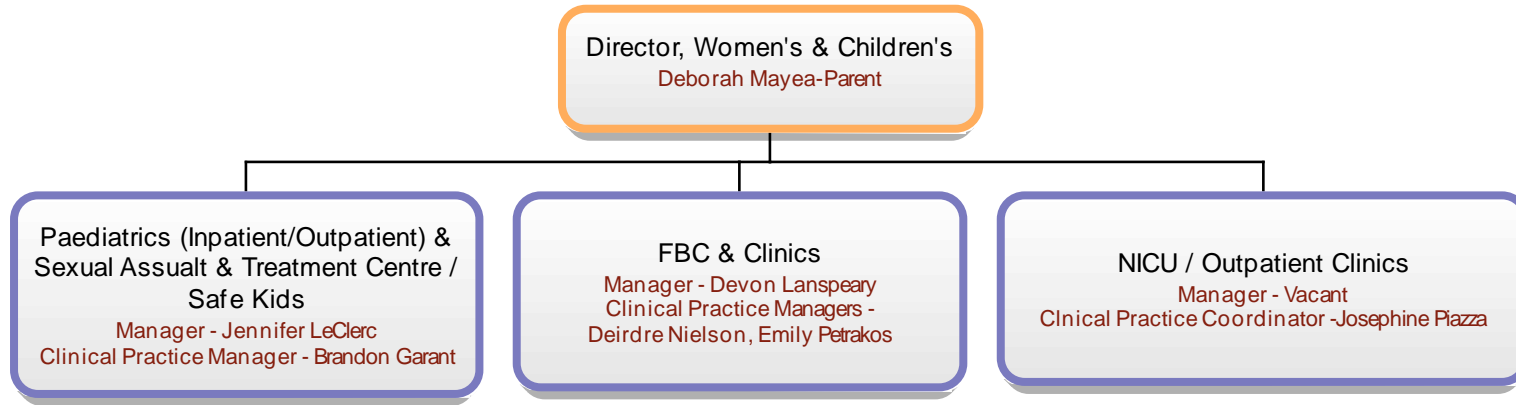
# Director, Surgical Inpatient Services



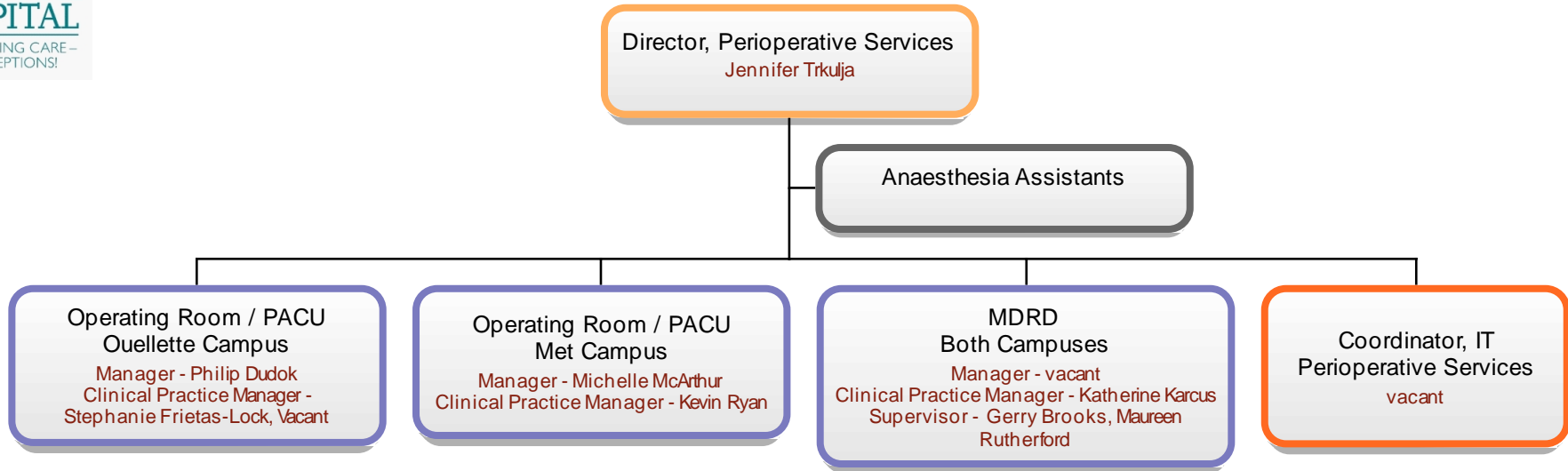
Director, Surgical Inpatient Services  
Kelly Heron



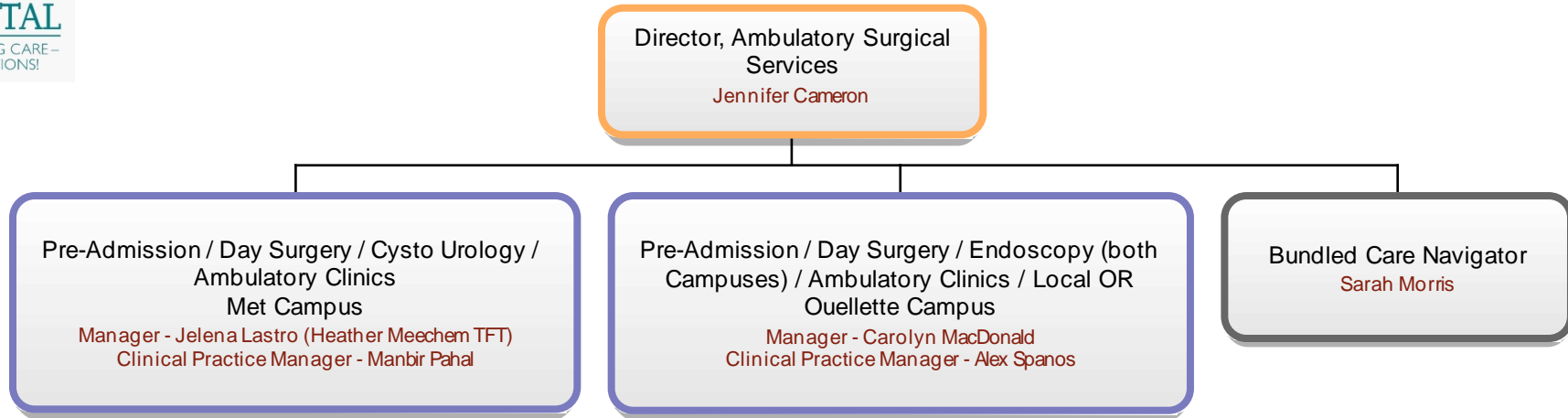
# Director, Women's & Children's Services



# Director, Perioperative Services

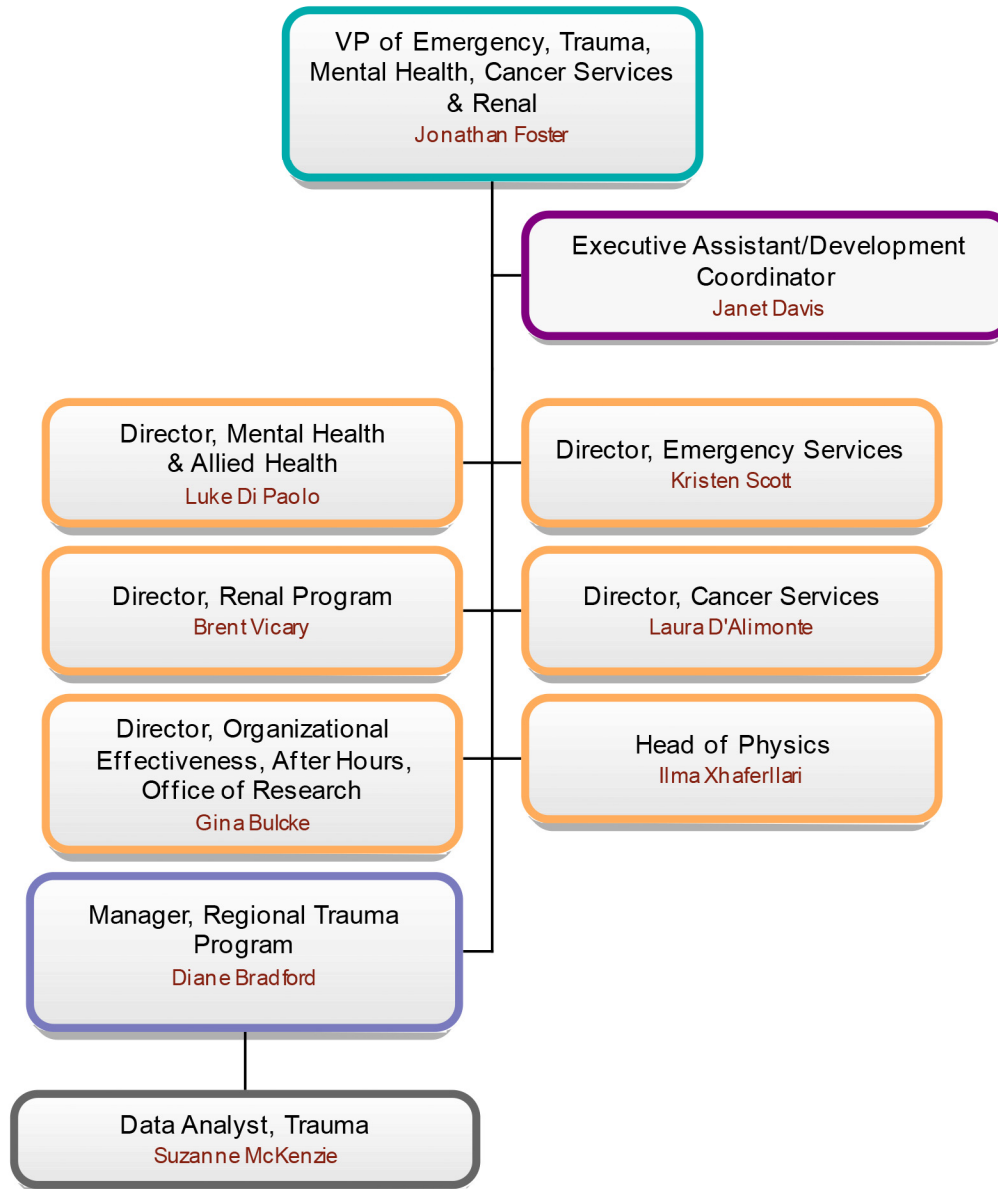


# Director, Ambulatory Surgical Services

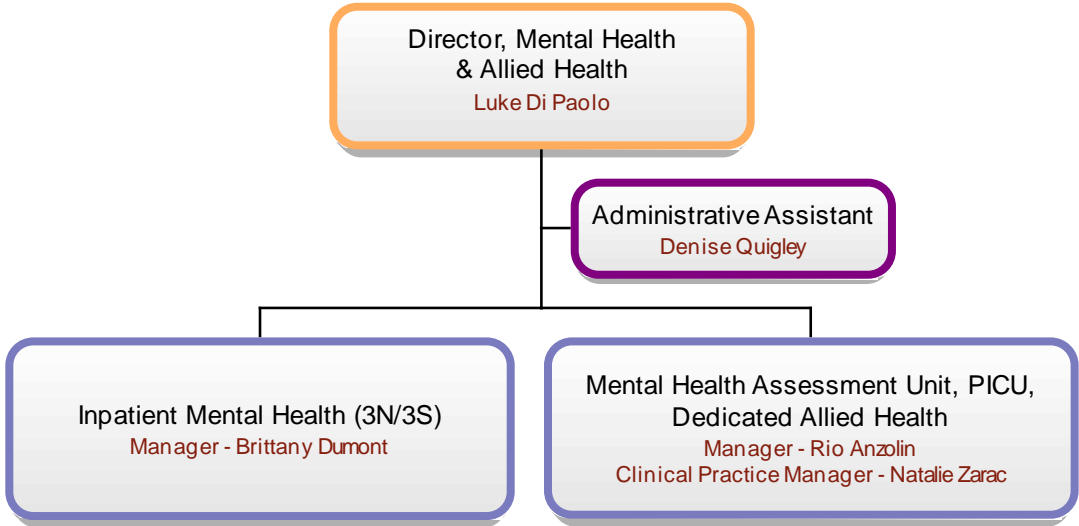




# Vice-President, Emergency, Trauma, Mental Health, Cancer Services & Renal

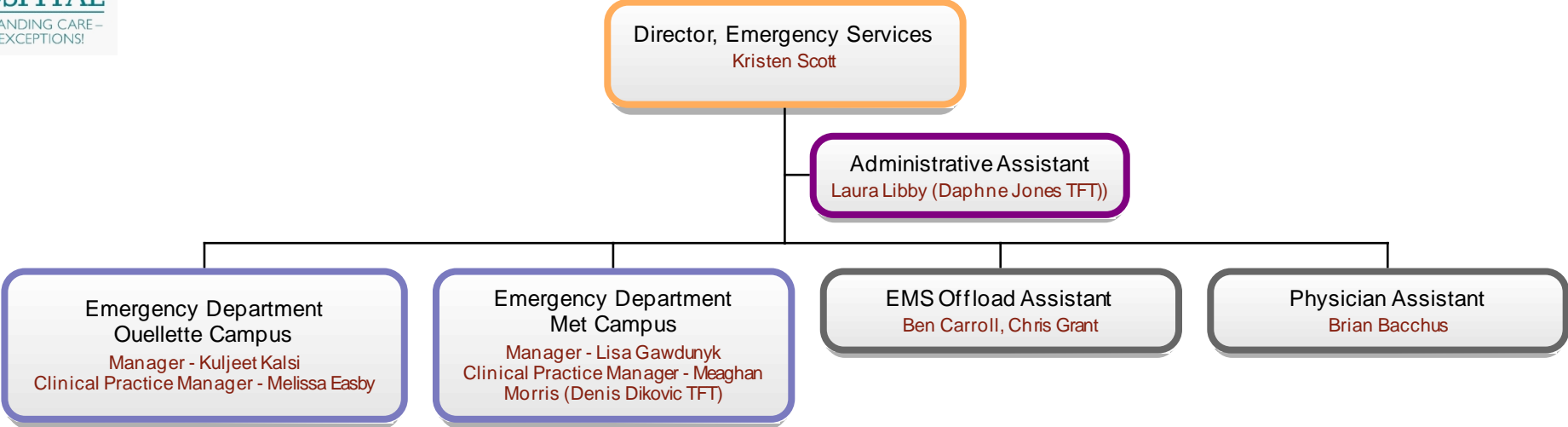


# Director, Mental Health & Allied Health

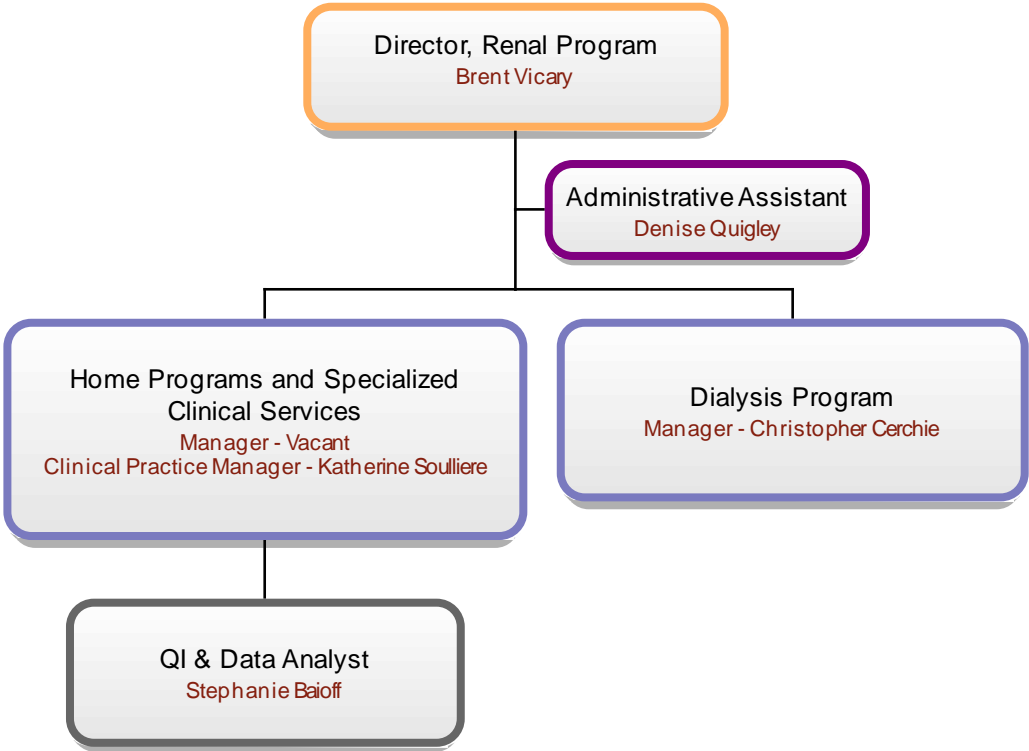




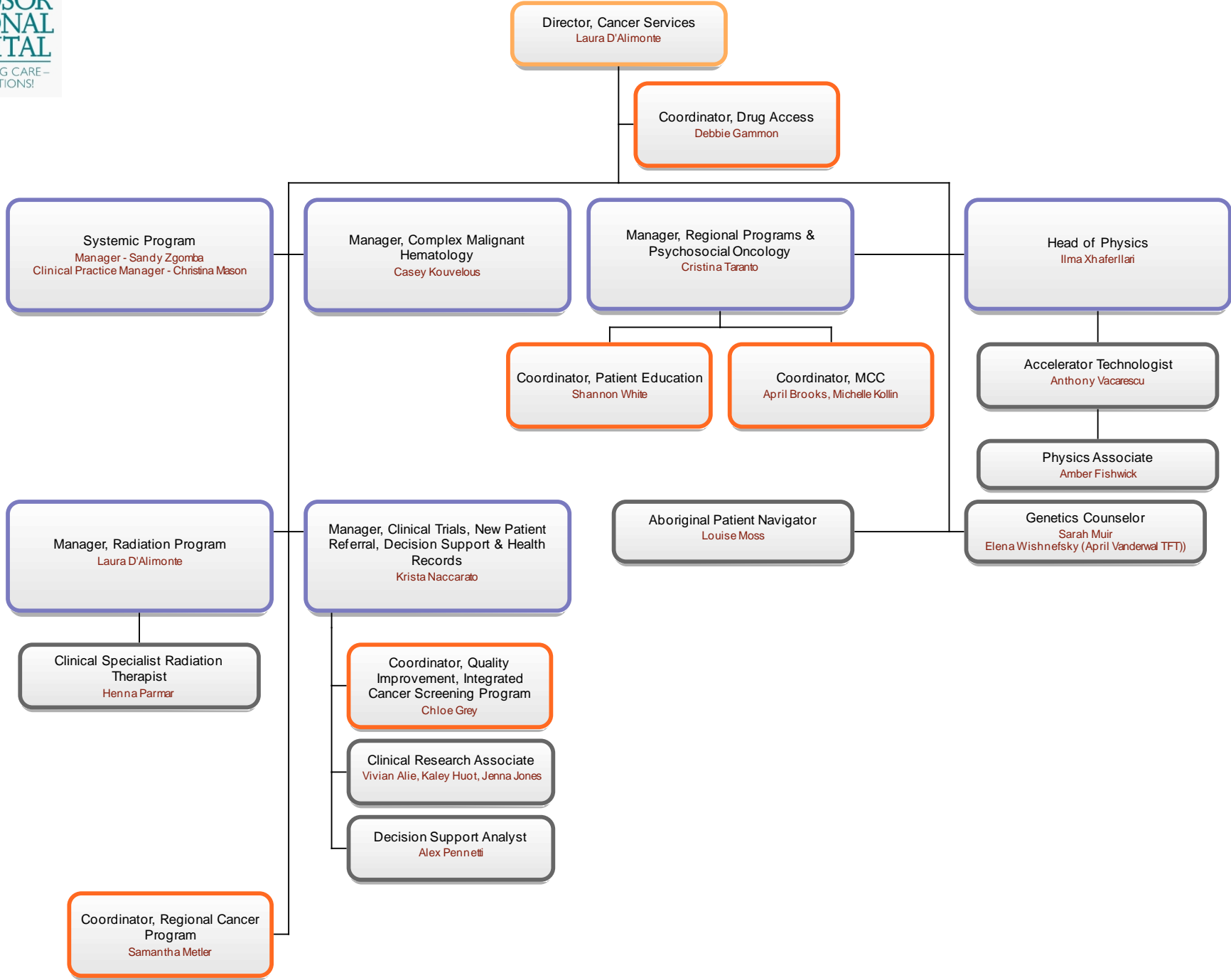
# Director, Emergency Services



# Director, Renal Program

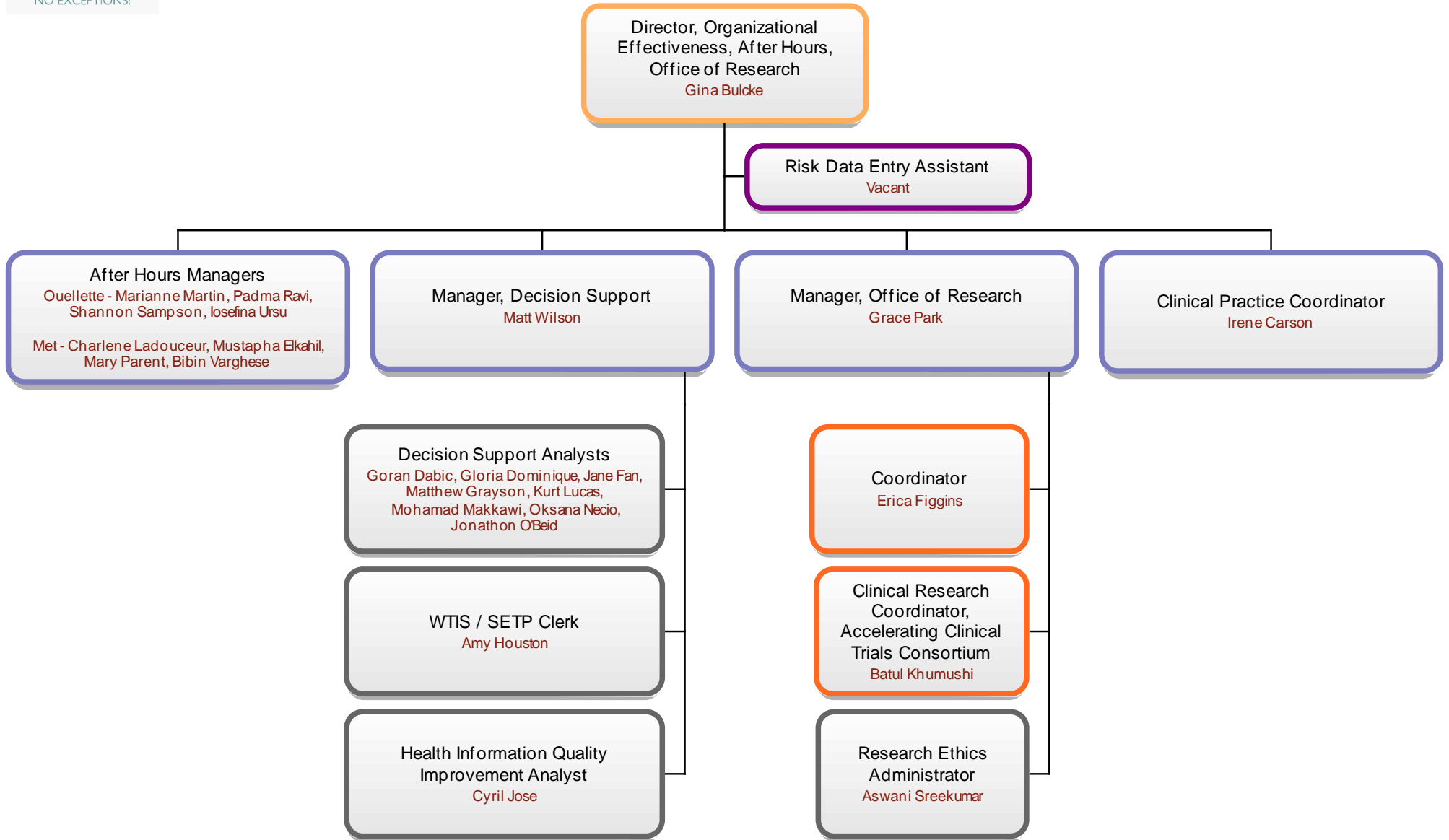


# Director, Cancer Services



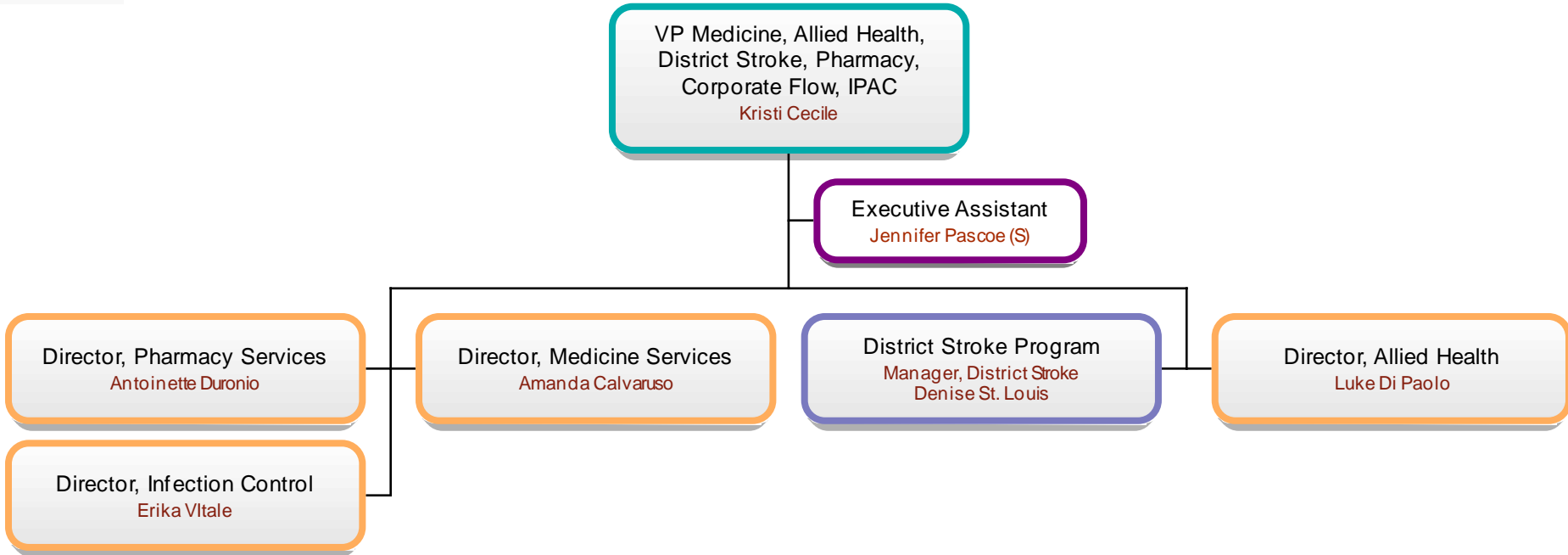


# Director, Organizational Effectiveness, After Hours, Office of Research

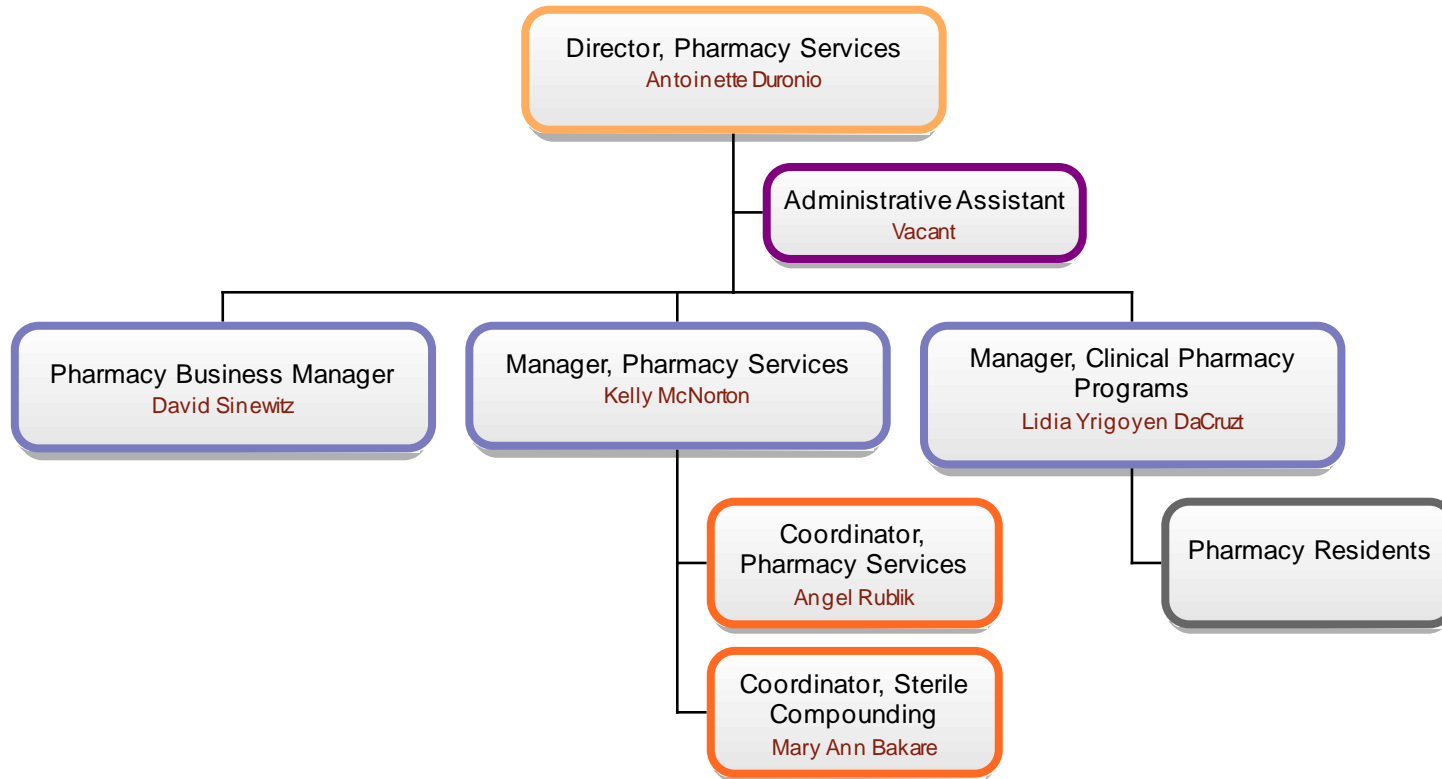




# Vice-President, Medicine, Allied Health, District Stroke, Pharmacy, Corporate Flow, IPAC

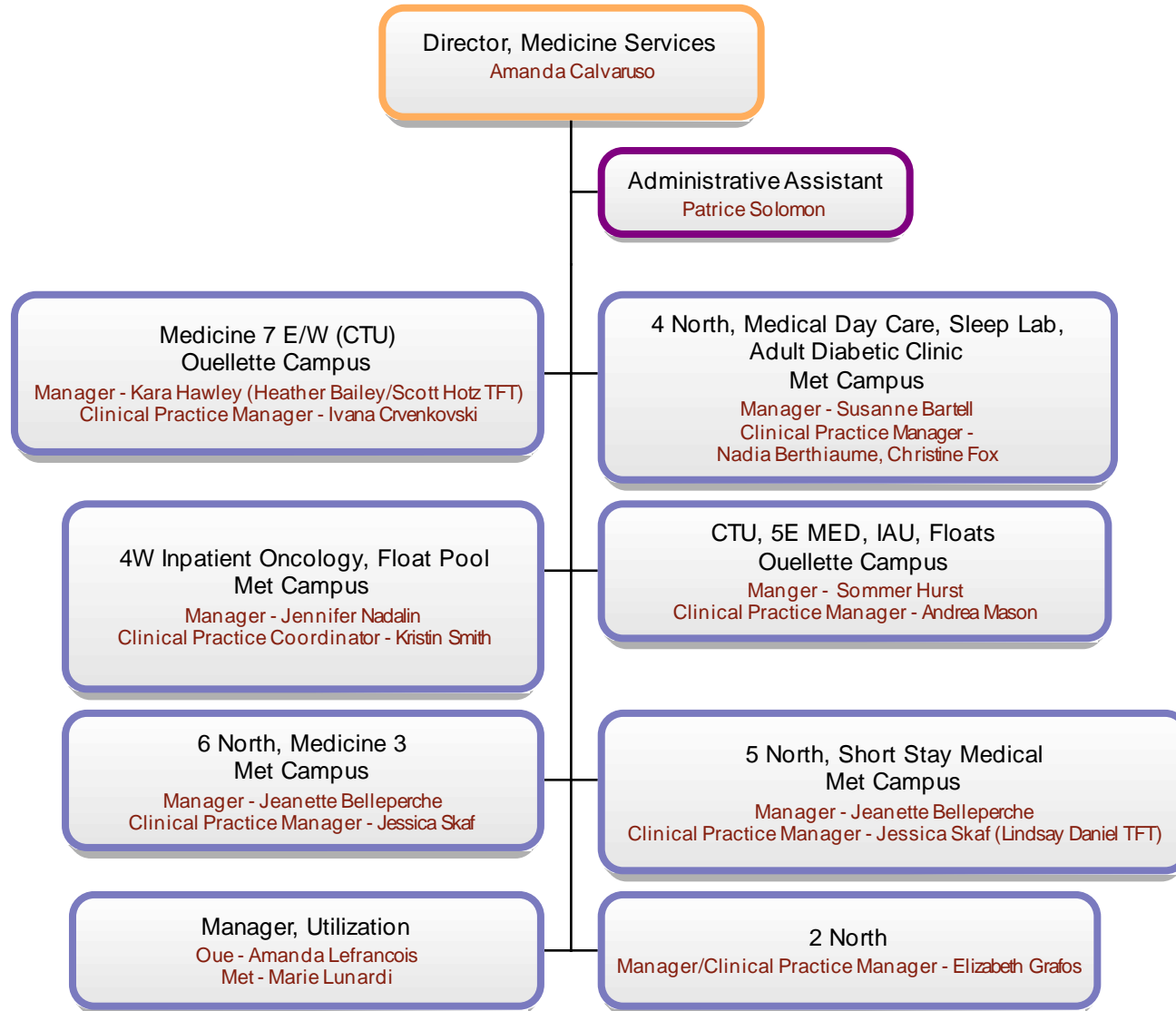


# Director, Pharmacy Services



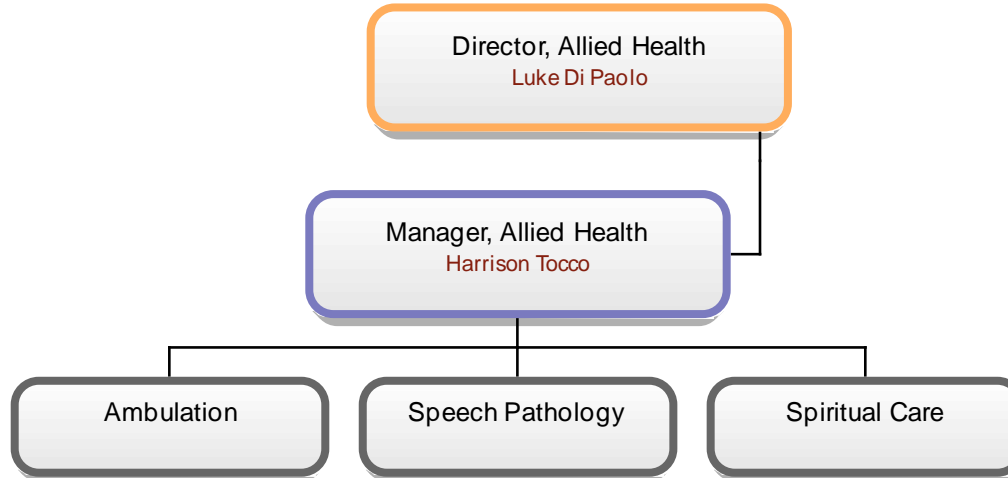


# Director, Medicine Services





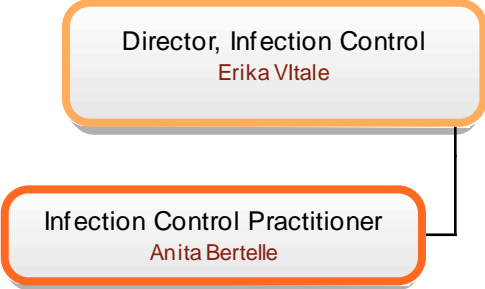
# Director, Allied Health





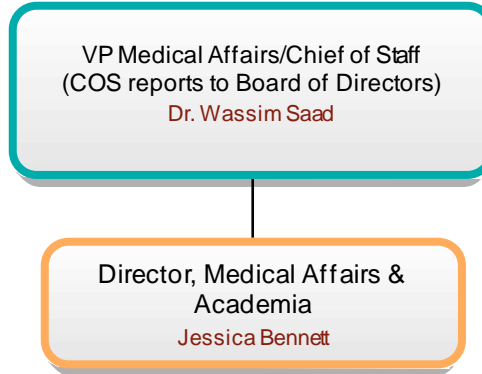


# Director, Infection Control

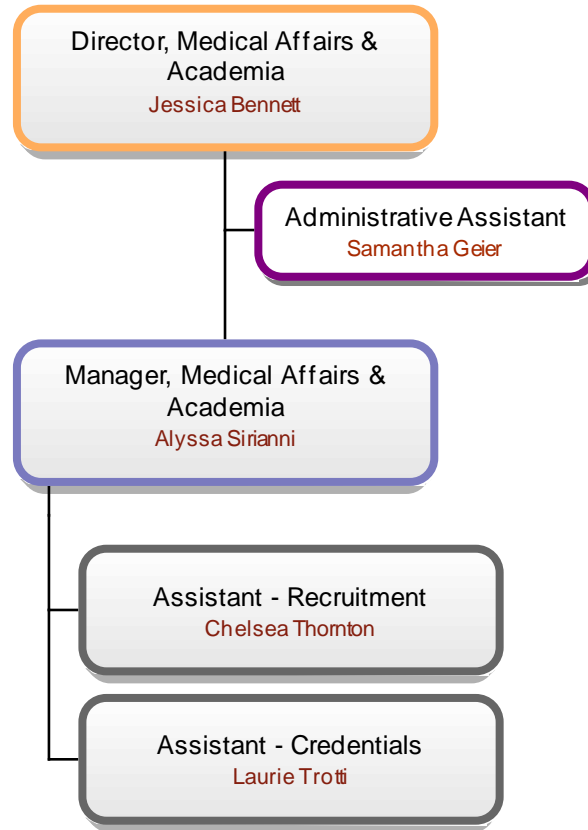




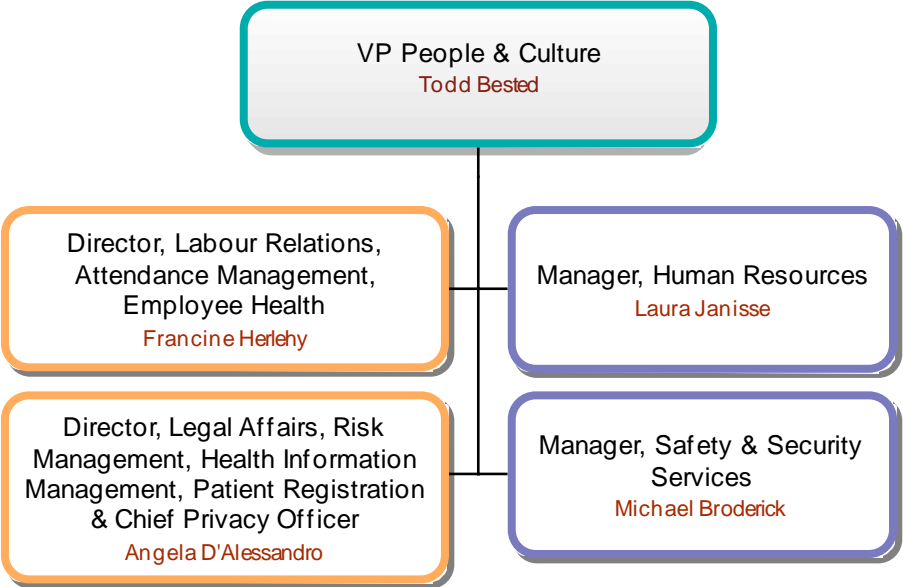
# Vice-President, Medical Affairs & Acadamia & Chief of Staff



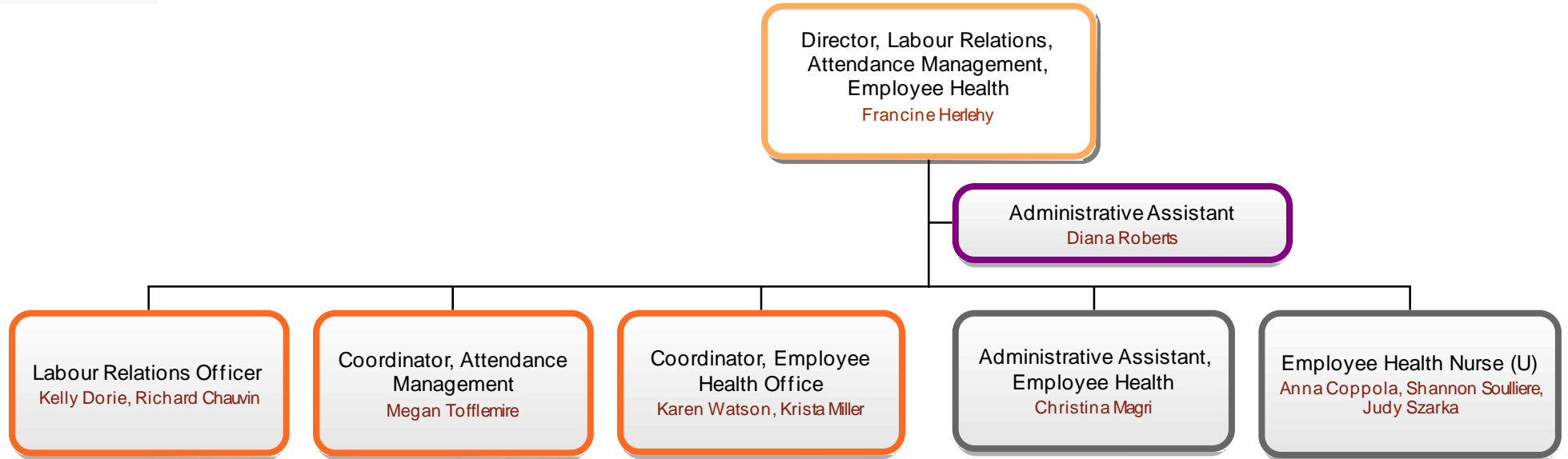
# Director, Medical Affairs



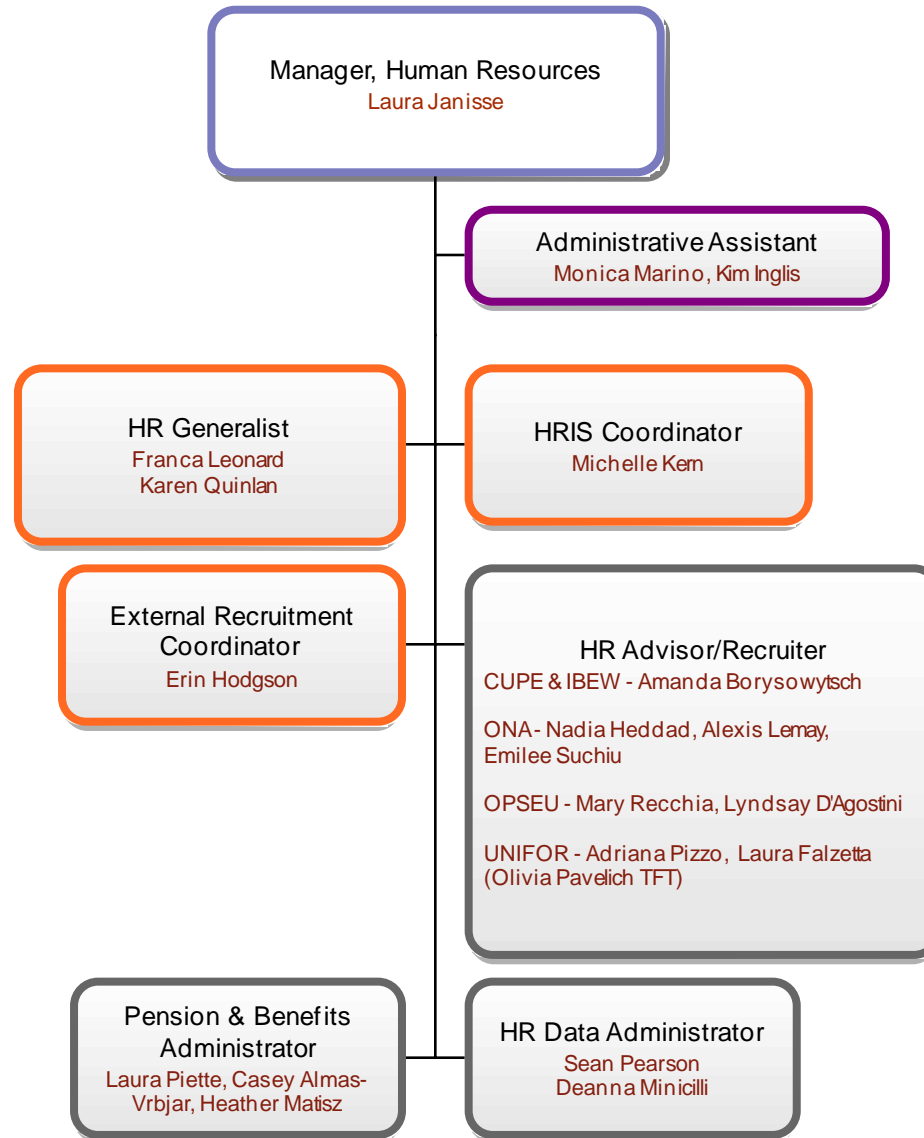
# Vice President, People & Culture



# Director, Labour Relations, Attendance Management, Employee Health

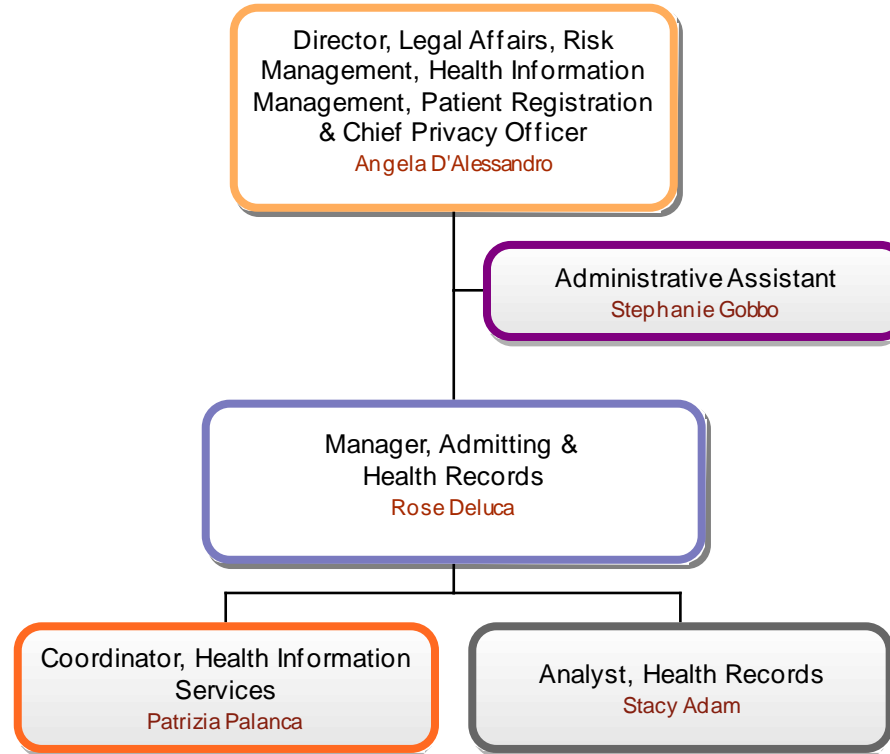


# Manager, Human Resources





# Director, Legal Affairs, Risk Management, HIS Patient Registration & Chief Privacy Officer





# Manager, Safety & Security Services

