

Frontline Tribune



Nobody can go back and start a new beginning, but anyone can start today and make a new ending. ~Maria Robinson

NOVEMBER 25TH, 2013

VOLUME 1 EDITION 9

www.wrh.on.ca



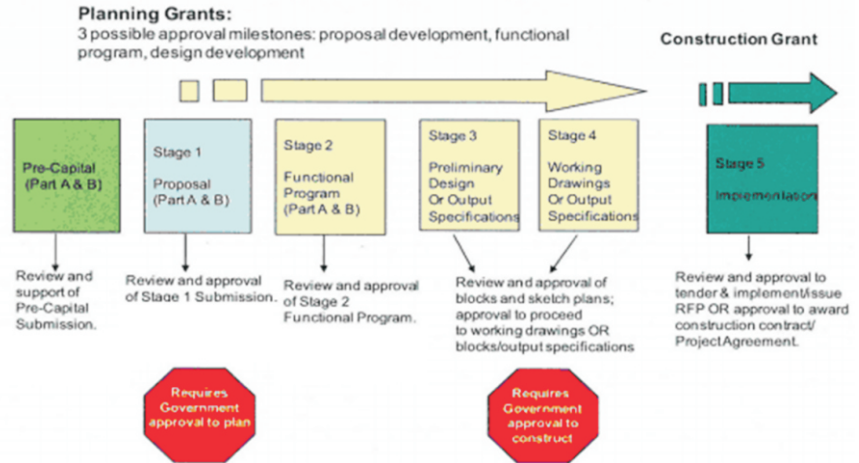
STEERING COMMITTEE MOVES FORWARD WITH PLANS FOR FUTURE HOSPITAL AND HEALTHCARE

Windsor Regional Hospital and Hôtel-Dieu Grace HealthCare Boards have unanimously approved a Phase 1A Report, a first step in moving forward with a new state-of-the-art facility. The diagram shows however, there is still plenty of work to do before even a shovel goes in the ground!

The Phase 1A Report looks at projected operating costs, staffing and bed requirements. Size, location and capital costs all come later.

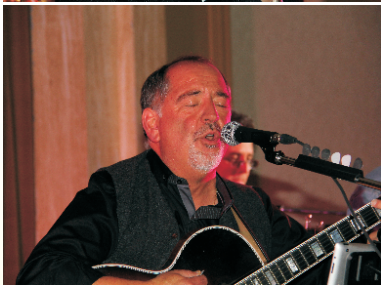
Approval from the Erie St. Clair Local Health Integration Network and Ministry of Health and Long-Term Care is required before moving forward. Hospital staff, healthcare professionals and community members will have opportunities to participate in discussions before the final plans are completed. Visit www.windsorhospitals.ca for updated information on the project.

Overview of Capital Planning Process



TRAGICALLY O'HIP CONCERT A BLAST!

The Tragically O'Hip musical evening was a tremendous 'hit' when Windsor Regional and Hôtel-Dieu Grace physicians, medical students and staff participated in a musical evening that was defined as "the biggest event since Woodstock!" Organized by Dr. Len Cortese, several hours of practice resulted in a fundraising evening that supported a need for special cinema-vision goggles for paediatric patients receiving an MRI. A video of the event will be posted on the Windsor Regional Hospital site soon.



Sammy Tayfour captivates the audience along with Dr. Cortese stealing the show!



FAMILY GIVING CAMPAIGN UPDATE

As we enter the third week of the Family Giving Campaign, Chair, Christine Donaldson expresses her deep gratitude and appreciation to all who have responded to date. We are at almost 50% of the goal of \$115,000. You still have time to make a commitment plus an opportunity to win prizes like gifts cards, a day off with pay, travel voucher and more by simply completing the donation form or online. We all know 'Giving starts from within' and, to all those who have responded to date, THANK YOU!

LAST REMINDER OF HENRY FORD HEALTH SYSTEM/WINDSOR REGIONAL HOSPITAL 4TH ANNUAL INTERNATIONAL PATIENT SAFETY SYMPOSIUM FRIDAY, DECEMBER 4 - ATHENEUM SUITE HOTEL, DETROIT CALL 313-916-8354 FOR INFORMATION

4TH YEAR BScN STUDENTS GIVE INFORMATIVE PRESENTATION

University of Windsor (U of W) nursing students, Jackki Smith and Ben Melville, as part of their placement this semester, gave a presentation about the importance of Geriatric Emergency Management (GEM) to their co-workers in the Ouellette Campus Emergency Department. They are in their final year and felt the presentations could provide staff with further explanation on the standard of service Windsor Regional Hospital provides their emergency patients. GEM is a program that provides specialized frailty-focused nursing services in hospital ERs across the country.

The Emergency Program provides a full range of services to meet the unscheduled and emergency health care needs for clients of all ages in Windsor and Essex County. The Ouellette Campus ER receives more than 50,000 visits each year and their care consists of unscheduled emergent and non-emergent care, including examination and treatment, care of fractures or sprains, health teaching, resuscitation, stabilization, care for critically ill or injured patients, and more.

Jackki Smith featured her presentation on how patients' path throughout emergency should be maintained, the way patients are treated, receive proper care and assessment. Ben Melville's presentation highlighted the dangers of elderly falls and how the ER can assist those patients more effectively in the future.



(From l to r) Norma Mamaril, Jackki Smith, Ben Melville and Jackie Fuerth

BANK OF MONTREAL WAS FIRST BANK IN CANADA

Completing their Cornerstone of Caring pledge of \$70,000 recently, representatives of BMO, Windsor and Essex County branches are all smiles as they pose in the Lewenza Lobby of the Tayfour Campus. The funds go toward the new facilities for rehabilitation, specialized mental health and complex continuing care. Remo DiPaolo, BMO Area Manager stated that the funds were an investment in the community toward improving patient care. The Bank of Montreal was Canada's first bank to open in 1817 and ultimately worked with millions of personal, commercial, corporate and institutional customers.





AUBRI'S ANGELS

FIGHTING CANCER ONE PRAYER AT A TIME

**FUN for the whole family
FREE Rides, Magician, Face painting and more!**

Fundraiser Dinner & Event

Friday Nov. 29th 5pm-8pm

Full pasta & broasted chicken buffet dinner, door prizes, Raffle Baskets, Silent Auction & Cut-a-thon

1550 Road 3 East, Kingsville

***Please bring in any new toys for the Windsor Regional Hospital Child Life Services Pediatric Unit**

GOLETTA'S Raffle ticket sales to benefit the Ronald McDonald House in London



Adults: \$25 (519) 919-4278 for tickets
 Kids ages 4-12: \$15 Or email at aubrisangels@yahoo.ca
 3 & under FREE www.aubrisangels.ca



DID YOU KNOW? 2013 marks the sixth year of the WRH Family Giving Campaign. Employees, physicians, volunteers and retirees have raised over \$500,000 to date towards WRH programs and services. The campaign has allowed for the purchase of hospital equipment.