



# FRONTLINE TRIBUNE

JUNE 1, 2015

VOLUME 3 / EDITION 22



COMPASSION is our  
PASSION



The FRONTLINE TRIBUNE is a publication of the Public Affairs and Communications Office of Windsor Regional Hospital  
Met Campus-1995 Lens Avenue, Windsor, N8W 1L9 / Ouellette Campus-1030 Ouellette Avenue, Windsor, N9A 1E1

## IN THIS WEEK'S ISSUE

**PAGE 1** • WRH CHALLENGES OTHER HOSPITALS TO GIVE BLOOD

**PAGE 2** • BBQ & PICNIC FOOD SAFETY 101  
• RONALD MCDONALD HOUSE BOWL-A-THON  
• NEW FACES AT WRH

**PAGE 3** • LAST CALL FOR THE BIG BIKE  
• FOOD DRIVE CONTINUES  
• KATIE'S BIRTHDAY DONATION  
• CRITICAL CARE OUTREACH TEAM

**PAGE 4** • LOSE WEIGHT WITH TINA  
• SCENT SENSITIVE ENVIRONMENT  
• PROVINCIAL STROKE ROUNDS  
• TUITION ASSISTANCE

### WINDSOR REGIONAL HOSPITAL FRONTLINE TRIBUNE

To contribute a news tip, story or advertisement in the next issue, please email us at:  
[frontlinetribune@wrh.on.ca](mailto:frontlinetribune@wrh.on.ca)

**Ron Foster, Editor**  
[ron.foster@wrh.on.ca](mailto:ron.foster@wrh.on.ca)  
519-254-5577 ext.52003

**Gisele Seguin**  
[gisele.seguin@wrh.on.ca](mailto:gisele.seguin@wrh.on.ca)  
519-254-5577 ext.52008

**Steve Erwin**  
[steve.erwin@wrh.on.ca](mailto:steve.erwin@wrh.on.ca)  
519-254-5577 ext.33350

**David Lenz**  
[david.lenz@wrh.on.ca](mailto:david.lenz@wrh.on.ca)  
519-254-5577 ext.32539

Got a news story, flyer or announcement that you would like to be considered for posting in the next issue of the newsletter?

Send it to us today!!!!

## WRH Challenges Other Hospitals To Give Blood

Windsor Regional Hospital cares about community – and we want to show other hospitals just how much we care when it comes to life-saving blood donations!

Windsor Regional Hospital is proud to participate in Canadian Blood Services' 6<sup>th</sup> annual Hospital Challenge. Competing against all hospitals in South Central Ontario, we are aiming to donate the most number of blood units in June and July to help ensure we maintain a stable supply of blood during the summer months.

You can help by becoming a Windsor Regional Hospital "Partners for Life" member if you work at Windsor Regional or you are a friend or family member.

Register online or, if you go to give blood locally, just let the registration clerk know you'd like to register as a Windsor Regional PFL member the next time you donate.

All those who register in June & July (and all existing PFL members) will be entered into a draw for one of two \$50 gift cards!!

<https://forms.blood.ca/Web/PFL.nsf/Member?openform&Lang=E&SFDS=S&cURL=/Web/PFL.nsf/French?OpenPage&Category=Forms&pid=WIND715620>

Here's who we're competing against:

- London Health Sciences
- St. Joseph's Health Care (London)
- Woodstock General Hospital
- Brantford General Hospital
- St. Thomas Elgin General Hospital
- Trillium Partners
- Huron Perth Healthcare Alliance
- Princes Margaret Cancer Centre (Toronto)
- St. Michael's Hospital (Toronto)
- University Health Network – Toronto General
- Toronto Western Hospital
- Mount Sinai Hospital (Toronto)
- William Osler Hospital (Brampton)



In the 2013/14 fiscal year, Windsor Regional Hospital (both campuses) helped patients by using 12,208 units of blood. If we could give back only 1% of this during this challenge, we would accumulate 122 units. With 4,000 staff plus the volunteers, family and friends, we can do this!

Blood donor information booths will be set up at both campuses on special days during the campaign. Stay tuned for more details!

For more information, please visit [www.wrh.on.ca](http://www.wrh.on.ca).

Get Connected with Windsor Regional Hospital!

[www.wrh.on.ca](http://www.wrh.on.ca) / [@WRHospital](https://www.facebook.com/WindsorRegionalHospital)

# UPCOMING EVENTS

**JUNE 03** Provincial Stroke Rounds  
Time: 8:00am  
Ouellette Campus - Harrow Room  
Met Campus - Admin Clinical Ed Room

**JUNE 04** KiliKlimb Bon Voyage Event  
Time: 7:00pm  
Walkerville Brewery  
525 Argyle Road, Windsor

**JUNE 07** Dieu Ey Tata Dragon Boat Team Event  
Time: 2:00pm - 6:00pm  
Charly's Tavern  
4715 Tecumseh Road East, Windsor

**JUNE 17** A Day For Life Golf Tournament  
Time: 11:00am  
Kingsville Golf & Country Club  
640 County Road 20, Kingsville

**JUNE 22** 2015 LaSalle Police Charity Golf Classic  
Essex Golf & Country Club  
7555 Matchette Road, Windsor

**JULY 18** Dragon Boats For The Cure  
Waterfront Park  
13161 Tecumseh Road East, Tecumseh

**JULY 19** Dragon Boats For The Cure  
Waterfront Park  
13161 Tecumseh Road East, Tecumseh

**JULY 20** Rafih Auto Group: 4th Annual Charity Golf Tournament  
Beach Grove Golf & Country Club  
14134 Riverside Drive East, Tecumseh

**AUG 28** Return From Africa - KiliKlimb  
Fogolar Furlan Club  
1800 N Service Road, Windsor



Risk factors for VRE acquisition include severity of underlying illness, presence of invasive devices, prior colonization with VRE, antibiotic use and length of hospital stay.

## BBQ And Picnic Food Safety 101

### Barbeques and Picnics

Ontarians love to barbecue, especially when the weather starts to get warm. Food poisoning risk increases during the summer when people are more likely to be cooking outdoors. Harmful bacteria spread quickly in warm, moist conditions, so it's especially important to follow safe food handling guidelines. Here's some food safety tips that can help keep you and your family safe from food poisoning during the warm summer months.

### In the cooler

- If you are storing your meat in a cooler, make sure that the cooler is kept cold with ice packs, dry ice or ice cubes from a safe drinking source.
- Keep the cooler out of direct sunlight.
- Avoid opening the cooler often. You may want to use a separate cooler for drinks as it will probably get opened more often.
- Remember to keep food out of the temperature danger zone of 4°C to 60°C (40°F to 140°F). Your food can become dangerous after only two hours in this range.

### Safe cooking tips

- Cook meat thoroughly to a safe temperature. Use a clean food probe thermometer to be sure!
- Keep cold food cold and hot food hot until it's served. You can keep cooked meats hot by setting them to the side of the grill.
- Discard any food left out for more than two hours. On hot summer days don't keep any food out for more than one hour.

### Avoid cross-contamination

- Keep raw meat away from other foods. You can do this by packing meats separately or by making sure they are wrapped separately, so that juices don't leak out onto other foods.
- Wash your hands carefully with soap and warm water for at least 20 seconds before and after handling raw meat.
- Clean your cooking equipment, utensils and work surfaces and sanitize them with a mild bleach solution (5mL (1tsp) bleach with 750mL (3 cups) water).



## 12th Annual Ronald McDonald House Bowl-A-Thon!

Come bowl in support of Ronald McDonald House families Sunday, June 14<sup>th</sup> at Rose Bowl Lanes! Email Kelley at [kmontfort@rmhswoc.ca](mailto:kmontfort@rmhswoc.ca)

WRH is a proud supporter of RMH Charities Southwestern Ontario, who recently partnered with the hospital to develop a new Ronald McDonald House scheduled to be located inside Met campus next year.

### INTRODUCING NEW FACES AT WINDSOR REGIONAL HOSPITAL



**Sheila Hunt**  
PAYROLL CLERK  
PAYROLL



**Janice Emery**  
REGISTERED NURSE  
CRITICAL CARE



**Kimberly Schultz**  
ADMITTING CLERK  
ADMITTING



**Diane Wilson**  
REGISTERED NURSE  
EMERGENCY

## Last Call To Get On Board For The Big Bike

C'mon downtown for a great Friday evening event this week with your colleagues for a good cause!

The Heart and Stroke Foundation's "Big Bike" event will feature two teams from WRH riding on the oversized bikes **Friday, June 5th at 6 pm** in support of research, public education and advocacy efforts.

There are spots available for two bikes, each with 29 people riding together. It's a great opportunity for camaraderie – teams can meet in advance at the Bull 'N Barrel at 670 Ouellette Ave., a short walk after work from the Ouellette campus – all in support of a good cause.

Come out and have some fun! Contact our Ride Captains.

Denise St. Louis, District Stroke Coordinator, ext. 33770  
John Bradt, Clinical Practice Manager,  
Cardiac Cath Lab/Diagnostic Imaging, ext. 33625



## Downtown Mission Food Drive Continues!

The "One CAN Make a Difference" campaign to restock food shelves at The Downtown Mission continues through to June 5th!

The Mission is in desperate need of all food items. Protein-based items are in particular demand, such as canned meats, tuna, salmon and peanut butter, as well as pasta, sauce, cereal, Kraft Dinner, soups and canned vegetables.

Please donate to the Mission by dropping non-perishable food items at bins located in the lower lobby of Met campus and near the Pharmacy of the Goyeau lobby at Ouellette campus. **A third location has been added in the Cancer Centre lobby.**

In December, we collected more than 3,500 items for the Mission's food banks through a "One CAN Make a Difference" food drive campaign. I hope we can demonstrate that we can continue to make a difference in our community.



## FOUNDATION NEWS

### Katie's Birthday Donation

For most children's tenth birthday they ask for toys and treats, Katie wanted to do something very special with her birthday presents this year. Katie was diagnosed with Leukemia at a very young age, and after spending time in the Peadiatric floor of Windsor Regional Hospital, Katie wanted to give back to those who also spent time there as well. For Katie's tenth birthday, she asked her friends to give the gift of happiness and help her purchase numerous arts and crafts for the Peadiatric floor children. We wish Katie a happy birthday and a healthy life and thank her for her kind thoughts and actions!



**PHOTO CAPTION**

Katie is joined by her brother Joey and sister Riley

## EFFECTIVE JUNE 1, 2015

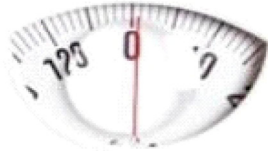
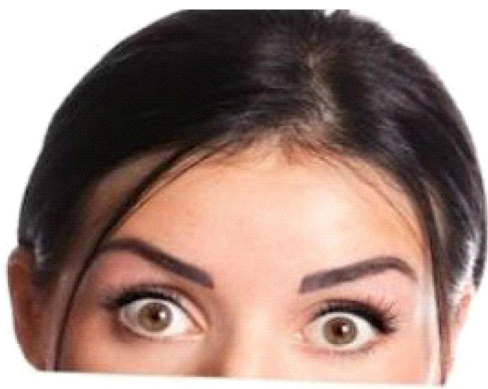
**CRITICAL CARE  
OUTREACH TEAM  
CALLING CRITERIA**



Consider calling CCOT if there is an acute change in:

- |                             |  |
|-----------------------------|--|
| <b>Airway</b>               | <ul style="list-style-type: none"> <li>• Threatened</li> <li>• Stridor</li> <li>• Excessive Secretions</li> </ul>  |
| <b>Breathing</b>            | <ul style="list-style-type: none"> <li>• Respiratory &lt; 8 or &gt;25</li> <li>• Distressed Breathing</li> <li>• Saturations &lt; 90% or FIO2 &gt;50%</li> </ul>           |
| <b>Circulation</b>          | <ul style="list-style-type: none"> <li>• Systolic Blood Pressure &lt; 90mmHg or &gt; 200mmHg or decrease &gt; 40 mmHg</li> <li>• Heart Rate &lt; 40 or &gt; 130</li> </ul> |
| <b>Disability/Neurology</b> | <ul style="list-style-type: none"> <li>• Decreased Level of Consciousness</li> <li>• New onset seizure or seizure lasting &gt; 5 minutes</li> </ul>                        |
| <b>Other</b>                | <ul style="list-style-type: none"> <li>• Urine O/P &lt; 100 ml in 4 hours</li> <li>• Serious concerns about the patient</li> </ul>   |

**Your CCOT team is here to help.  
Just Call 519-995-6597**



WRH Healthy Lifestyles invites you to:

## Lose Weight with Tina!

Summer 2015 Session:

**\$60 for 8 weeks beginning Thursday June 4th**

Payroll deduction available

Met sessions at 12:00 ~ Ouellette sessions at 3:15

Schedules to be provided when registration is completed

**Registration: Thursday May 28th**

Met Campus-Vendors Hallway, 11:30am to 1:00pm

Ouellette Campus-Vendors Hallway 2:30pm to 4:00pm

# Applying for Tuition Assistance?

Your completed application and agreement form (approved by your Manager) must be submitted to Learning Resources (Met Campus) **BEFORE** the course begins and **BEFORE** the intake deadline date

Applications received after the course has started and/or after the intake deadline will **NOT** be accepted

Classes Beginning

Intake Deadline Date

Classes Beginning	Intake Deadline Date
Jul 1 - Aug 31, 2015	June 1, 2015
Sept 1 - Oct 31, 2015	August 1, 2015
Nov 1 - Dec 31, 2015	October 1, 2015
Jan 1 - Feb 28, 2016	December 1, 2015
Mar 1 - Apr 30, 2016	February 1, 2016

Please visit the **WRH Intranet: Learning Resources** site for detailed information. **There HAVE BEEN changes** to the Tuition Assistance Policy and Application. Questions? Contact Christine Duval x. 52821

WRH Intranet/Programs and Services/Learning Resources/Tuition Assistance



The **Toronto Stroke Networks** invite you to participate in **Provincial Stroke Rounds** via videoconference or webcast:

- Title:** The Care and Outcomes of TIA and Minor Stroke in Ontario
- Date/time:** Wednesday, June 3rd 2015  
0800-0900 hours EST
- Presenters:** Ruth Hall, PhD  
Stroke Evaluation Specialist, Ontario Stroke Network; Adjunct Scientist, Institute for Clinical Evaluative Sciences; Assistant Professor (status only), University of Toronto  
Moira Kapral, MD MSc FRCPC  
Professor of Medicine, University of Toronto and Senior Scientist, Institute for Clinical Evaluative Sciences
- Host site:** Sunnybrook Health Science Centre (System # TOR\_SHSC\_0013\_SHS\_06)
- Objectives:**
1. To understand the factors that influence decisions to hospitalize patients with TIA and minor stroke
  2. To review the optimal management strategies for TIA and minor stroke, and to determine how often these are provided to patients in Ontario
- Target audience:** Physicians, health care professionals interested in stroke care

This program meets the accreditation criteria of The College of Family Physicians of Canada and has been accredited for up to 1 Mainpro-M1 credits as approved by the Continuing Education and Professional Development Office of the Northern Ontario School of Medicine.  
This event is an Accredited Group Learning Activity (Section 1) as defined by the Maintenance of Certification program of the Royal College of Physicians and Surgeons of Canada, approved by the Continuing Education and Professional Development Office Northern Ontario School of Medicine for up to 1 hour.

**To register:** Contact your OTN Telehealth Coordinator to reserve your system

**Site coordinators:**  
<https://schedule.otn.ca/tsm/portal/nonclinical/details.do?request.requestId=44945600>

\* For those who do not have Ncompass access, please submit appropriate system information to: [scheduling@otn.ca](mailto:scheduling@otn.ca) stating Event ID. The Event ID is Non-Clinical Event# 44945600

**Webcast:** Live and Archived Webcast  
Search with event ID # 44945600  
at <http://webcast.otn.ca/index.html>



# SCENT SENSITIVE ENVIRONMENT



Windsor Regional Hospital request that all employees, physicians and volunteers as well as patients and visitors refrain from wearing products with strong scents or fragrances.

Many people have sensitivities to common chemical and environmental stimuli.

Thank you for contributing to a healthy & safe environment for all.

COMPASSION is our PASSION