



FRONTLINE DECEMBER 7, 2015 TRIBUNE

VOLUME 3 / EDITION 46



COMPASSION is our
PASSION



The FRONTLINE TRIBUNE is a publication of the Public Affairs and Communications Office of Windsor Regional Hospital
Met Campus-1995 Lens Avenue, Windsor, N8W 1L9 / Ouellette Campus-1030 Ouellette Avenue, Windsor, N9A 1E1

IN THIS WEEK'S ISSUE

- 1 • BIG SHOUT OUT TO OUELLETTE
8 EAST STAFF
- 2 • PATIENTS AT WRH WIN
• LADIES LOVE TO SEW
• NEW FACES AT WINDSOR REGIONAL
• SCHEDULE OF EVENTS
- 3 • GREEN TIME OF THE YEAR
• UW STUDENTS PAY IT FORWARD
• GIVING BACK TO OUR COMMUNITY
• HOLIDAY HOURS
- 4 • GET YOUR GIFT CARDS AND SUPPORT
WRH FOUNDATION
• WRH HOLIDAY SOCIAL
• CAUTION ICE SURFACE

A Big Shoutout To Ouellette 8 East Staff

Under the guidance of the SOP team, the 8 East Unit at Ouellette Campus completed a three-day intensive 5S initiative, defined as organizing and systemizing to maximize workflow. With staff feedback, the team is using a lean methodology to organize and standardize the Unit in a more efficient and orderly manner.

Several projects were accomplished including creating a Medication Room in a former shower area, providing a safer and more confidential area to access the Pixis system. Three work stations have been identified in former hallway storage areas that now contain a charting access terminal and hands-on medical equipment such as Dinamaps. Further improvements occurred in the Utility Room, Clean Utility Room and Kitchen, with clear signage for maximum efficiency.

Showcasing the changes and assisting with the tour of the improved 8 East Unit were Wendie Turnbull, RN and Pam Essery, RN, assisted by Operations Manager, Kristine Kennedy.

Congratulations to all who assisted in the 5S initiative on the 8E Ouellette Unit.



PHOTO ABOVE: Standardization Unit Project Team

WINDSOR REGIONAL HOSPITAL FRONTLINE TRIBUNE

To contribute a news tip, story or advertisement in the next issue, please email us at:
frontlinetribune@wrh.on.ca

Ron Foster, Editor
ron.foster@wrh.on.ca
519-254-5577 ext. 52003

Gisele Seguin
gisele.seguin@wrh.on.ca
519-254-5577 ext. 52008

Steve Erwin
steve.erwin@wrh.on.ca
519-254-5577 ext. 33350

David Lenz
david.lenz@wrh.on.ca
519-254-5577 ext. 32539



[facebook.com/windsorregionalhospital](https://www.facebook.com/windsorregionalhospital)



@WRHospital

STEP UP YOUR GAME FOR THE 2016 DREAMCLIMB!

A reminder that 8 East & 8 West are the Neuroscience Program at the Ouellette Campus who will benefit from proceeds raised at the 2016 DREAMCLIMB event taking place on January 16 and 17th at the Chrysler Dream Building, 1 Riverside Dr. E. Prizes and incentives available!

Individuals and teams can register now by going to www.dreamclimb.ca.

Visit our website for more information at www.wrh.on.ca



UPCOMING EVENTS

DEC 13 **WRH Children's Christmas Party**
Ciociaro Club of Windsor
3745 North Talbot Road, Windsor

DEC 15 **Blood Pressure Screening Clinic**
Time: 12:00pm - 3:00pm
Met Campus, Vendor Hallway

JAN 16 **DREAMCLIMB**
Time: 10:00am - 4:30pm
Chrysler Building
1 Riverside Dr. West

JAN 17 **DREAMCLIMB**
Time: 10:00am - 4:30pm
Chrysler Building
1 Riverside Drive West

JAN 30 **T2B "The Love Boat" Gala**
Ciociaro Club of Windsor
3745 North Talbot Road, Windsor

FEB 06 **In Honour Of The Ones We Love Gala**
Ciociaro Club of Windsor
3475 North Talbot Road

MAR 02 **Hats On For Healthcare**
Various locations throughout
Windsor-Essex
www.hatsonforhealthcare.com

JUN 09 **WRH Annual Charity Golf Tournament**
Essex Golf & Country Club
7555 Matchette Road, LaSalle

FLU SHOT NOTICE!

Flu shots are available at the WE Care Pharmacy during regular business hours of 9:00am - 5:00pm / Monday to Friday

FREE PARKING in the parking garage for Met Campus staff.



The influenza vaccine has been found to be 50 to 60% effective in preventing hospitalization and 85% effective in preventing death in elderly persons living in long-term care homes.

Patients at Windsor Regional Hospital Win Thanks To Caesars Windsor

Through its annual Concerts for a Cure campaign, Caesars Windsor donated \$25,000 to Transition to Betterness (T2B) on December 3 to refurbish an Oncology Room at the Met Campus.

Thanks to the generous donation, the semi-private patient room on 4 West will provide patients and their families with a more private and comfortable setting. The T2B/Caesars Windsor room features warm colors, wood trim and flooring, wall mounted television, fridge and sleeper chair.

"We are proud to continue our relationship with T2B through Concerts for a Cure," stated Kevin Laforet, Regional President, Caesars Entertainment. Kevin went on to say, "This homegrown charitable organization has aided thousands by providing simple, yet essential comforts to individuals and their families during difficult times."

The 'Concerts for a Cure' annual campaign donates \$1 for every Colosseum ticket sold during October and November. Funds raised support selected local non-profit organizations whose primary goal is to support cancer awareness through research, education, prevention and, provide assistance to individuals and their families undergoing treatment.

T2B, along with refurbishing patient rooms on 4 West also provide a Concierge Program, Comfort Cart and Comfort Blanket Program.

"One of the main visions of T2B is creating a comfortable environment through our room refurbishment program and we are happy that Caesars Windsor helped to continue to make this possible," said Amber Hunter, Executive Director of Transition to Betterness.



PHOTO ABOVE: (l to r) Jhoan Baluyot Manager of Public Relations at Caesars Windsor, Scott Jenkins Director of Advertising at Caesars Windsor, Glen Sawhill Senior Vice President at Caesars Windsor, Member of Windsor Hospital, Carolyn Marcotte VP of Legal and Compliance at Caesars Windsor, Amber Hunter Executive Director at Transition To Betterness, Erica Dufour Digital Media at Caesars Windsor

Ladies Love To Sew

The Fogolar Furlan Women's Association visited Windsor Regional Hospital recently and true to their nature, again donated items for infants and patients.

Their successful work resulted in 10 incubator warming blankets for NICU and 19 bibs provided to the Oncology Program.



PHOTO ABOVE (l to r): Members of the Fogolar Furlan Women's Association, Ada Toiariol, Teresa Raffin and Lucia Truanti with donated items.

INTRODUCING NEW FACES AT WINDSOR REGIONAL HOSPITAL



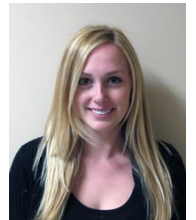
Elizabeth Grafos
REG. PRACTICAL NURSE
7 WEST



Melissa Ferreira
REGISTERED NURSE
6 EAST



Diane Jovcevski
UNIT CLERK
AMBULATORY CLINICS



Jelena Lastro
REGISTERED NURSE
6 EAST

Green Time Of Year!

Green as in holiday trees, wreaths, stockings over the fireplace and holly. Another, is Green Processing Company Inc., an industrial recycling firm in Windsor who continue to spread good cheer during the holidays. They visited Windsor Regional Hospital recently and donated \$2500 worth of toys, games, stuffed animals and, two iPad Airs to Paediatric Child Life Services who will see that children in the hospital are entertained and receive gifts. Thank you Green Processing Company Inc. for your generosity and goodwill during the Holiday Season!



PHOTO ABOVE (l to r): Gloria Kwong, Child Life specialist; Billie Jean Hartley, Green Processing Company and Jennifer Burton Liang, Child Life specialist, surrounded by the donated gifts.

UW Students “Pay It For Forward”

Odette School of Business students at the University of Windsor are assigned fundraising projects as part of their semester education. Windsor Regional Hospital's Paediatric Services was selected by a group who held a ball-hockey tournament and raised \$250 in addition to donating \$360 in merchandise. Thank you guys for 'paying it forward' and giving time and energy to assist kids in the hospital.



PHOTO ABOVE (l to r): Odette School of Business students, Rafael Leal, Mohammad Nateghi, Rob Turner, Naveen Kumar and Deji Owojori present their fundraising proceeds to Ron Foster, Executive Director of Windsor/Essex Hospitals Foundation.

We Care Pharmacy is now an authorized fitter and provider of Sigvaris Compression Stockings.

Most of the hospital Green Shield plans pay for compression stockings and there are a lot of newer styles to choose from athletic and running, casual, dress socks, etc.

Visit the We Care Pharmacy at the Ouellette Campus for more information.

(Reminder free parking in the garage for staff visiting from the Met Campus)

Giving Back To Our Community

Windsor and Essex County faces many challenges. Our unemployment rate remains high, meaning many local community organizations are looking for help this holiday season. WRH employees, professional staff and volunteers continue to demonstrate their Compassion for Community every year in supporting many causes within our hospital and in the broader community.

In keeping with this theme, both WRH and Hôtel-Dieu Grace Healthcare are refocusing efforts this holiday season on helping those who are less fortunate and foregoing the traditional holiday meals provided to those who are scheduled to work on Christmas Day and New Year's Day in order to focus on community needs.

In lieu, WRH will be providing food and refreshments for all employees, professional staff and volunteers by way of a Holiday Social on Thurs., Dec. 17th at both campuses (as well as the McDougall and Leamington satellite locations) from 2 pm to 4 pm and 11 pm to 1 am in exchange for a small donation (\$2 minimum). Proceeds will be donated to the Unemployed Help Centre, which provides programs and services to assist local unemployed and underemployed individuals and their families.

We will ensure the cafeterias are open at both the Met and Ouellette campuses on Christmas Day and New Year's Day. A full list of hours of operation over the holiday period is listed below.

The Holiday Social is in addition to the annual “One CAN Make A Difference” food drive for The Downtown Mission. Food donation boxes for non-perishable items will be placed in the main lobbies at the Met and Ouellette campuses as well as the Cancer Centre lobby.

We know there are many ways in which WRH staff give back to the community through their own individual efforts or as part of their unit or department. Please let us know how you or your team demonstrate Compassion for Community so that we can applaud staff efforts to support charitable endeavours!

Please support our community in the best way you can so we can all help make a difference for our community.

HOLIDAY HOURS OF OPERATION

MET CAMPUS

Tim Hortons

Open weekend hours for the holidays:

Dec. 19 – Jan. 4/16: 8 am – 4 pm
 Christmas Day: Closed
 New Years Day: Closed

Daily Grill

Dec. 21 – 24 : 7 am – 6 pm
 (coffee available 7am at The Daily Grill)
 Dec. 25, 26, 27: Closed
 Dec. 28 – 31: 7 am – 6 pm
 Jan. 01: Closed
 Jan. 02: 8 am – 2 pm
 Jan. 03: Closed

Subway

Dec. 21, 22, 23: 8 am – 10 pm
 Dec. 24: 8 am – 8 pm
 Dec. 25: 10 am – 6 pm
 Dec. 26-31: 8 am – 10 pm
 Jan. 01: 10 am – 6 pm
 Jan. 02: Regular hours, 8am – 10 pm

OUELLETTE CAMPUS

Tim Hortons

Hours for the holiday period:
 7am – 9 pm, every day except:
 Christmas Day: Closed
 New Years Day: Closed

Armandos

Dec. 21, 22, 23: 8 am – 6 pm
 Dec. 24: 9 am – 5 pm
 Dec. 25: 10 am – 5 pm
 Dec. 26, 27: 9 am – 5 pm
 Dec. 28, 29, 30: 8 am – 6 pm
 Dec. 31: 9 am – 5 pm
 Jan. 01: 10 am – 5 pm
 Jan. 02, 03: 9 am – 5 pm



Get connected with us! ■ www.wrh.on.ca



GET YOUR GIFT CARDS!

Did you know that you can **SUPPORT** and **DONATE** to Windsor Regional Hospital without any extra money coming out of your own pocket?

Choose from over 100 gift cards including local shops, restaurants and services!



SHOPPING MADE SIMPLE! GET YOURS TODAY!

Public Affairs / Foundation Office - Ouellette & Met Campuses

For more information contact Sandra Bauer at 519-254-5577 ext.52004 or Sandra.bauer02@wrh.on.ca



OUTSTANDING CARE - NO EXCEPTIONS!



HOLIDAY SOCIAL THURSDAY, DECEMBER 17

ALL EMPLOYEES, PROFESSIONAL STAFF & VOLUNTEERS

Windsor Regional Hospital will be holding a **Holiday Social** with sandwiches, vegetables with dip, fruit, coffee and tea in exchange for a small **\$2.00 donation**. Proceeds will benefit the Unemployed Help Centre, which provides programs and services to assist local unemployed and underemployed individuals and their families.

SANDWICHES • VEGGIE TRAYS • DESSERTS • COFFEE/TEA

2PM - 4PM

11PM - 1AM

MET CAMPUS (Auditorium Side A/B)

MET CAMPUS (Lobby Level)

OUELLETTE CAMPUS (Boardroom)

OUELLETTE CAMPUS (Mezzanine)

MCDOUGALL & LEAMINGTON (special delivery times)



**PLEASE USE CARE DURING WINTER CONDITIONS!
BE ON THE LOOKOUT FOR ICE!**

The sub-zero, bone-chilling temperatures of the winter season are beginning and creating some very slippery ice patches on sidewalks, roads and parking lots. Please be extra cautious and vigilant when walking to and from your vehicle.

- If you see any icy patches, please alert Security so that they can arrange to have the area cleared/salted.
- Wear appropriate footwear (such as good tread, rubber-soled, shoes/boots) for the weather conditions. In other words, smooth-soled shoes, high heels, flats, crocs, etc. are not appropriate for walking on potentially wet/icy surfaces.
- If you happen to slip and fall while walking outside, please contact Security immediately so the area can be cleared/salted. As well, ensure that you submit an RL6 report as soon as possible.

Be on the lookout for yourself and for others, and take your time when walking in potentially hazardous and icy conditions.