



FRONTLINE TRIBUNE

MAY 16, 2016

VOLUME 4 / EDITION 20



COMPASSION is our
PASSION

The FRONTLINE TRIBUNE is a publication of the Public Affairs and Communications Office of Windsor Regional Hospital
Met Campus-1995 Lens Avenue, Windsor, N8W 1L9 / Ouellette Campus-1030 Ouellette Avenue, Windsor, N9A 1E1

IN THIS WEEK'S ISSUE

1 • NEW RONALD MCDONALD HOUSE
WINDSOR OPENS AT WRH

2 • NURSING EXCELLENCE RECOGNIZED
• NEW FACES AT WRH
• SCHEDULE OF EVENTS

3 • LOCAL SHRINERS SHINE
• HEALTHY LIVING RECIPE
• WRH 2 BY 4 VIDEO CONTEST
• WRH VENDORS THIS WEEK

4 • NATIONAL BANK BASEBALL EVENT
• CIBPA CHARITY GOLF CLASSIC
• ICELAND & NORWAY PROMOTION
• WRH STAFF CHARGE CARD

The New Ronald McDonald House Windsor - Keeping Families Together When They Need Each Other The Most

From inside the new Ronald McDonald House, you would never know you are inside a hospital. Canada's first Ronald McDonald house within a hospital opened last week.

This new home-away-from home is a comfortable place for families to come and stay, or just take a break and get refreshed when their children are in hospital.

"This is truly a great day for families in Windsor and Essex County," said WRH Board Chair, Bob Renaud at the ribbon cutting ceremony on May 6, 2016. "What a proud moment for all of us."

The house has:

- 7 bedrooms – 5 with an en suite bathroom and 2 smaller bedrooms for naps and short stays.
- A shower /change room space for paediatric families who may be staying bedside
- A full kitchen stocked with free nourishment, where the coffee is always on.
- A dining room where families can sit and enjoy a home cooked meal with other parents who are dealing with similar health journeys.
- A laundry space to make sure clothes – even a child's favourite blanket – stay fresh and clean!
- Public lounge spaces with a television, books and a computer station so families can stay connected.
- A gorgeous sunroom/lanai to bring in some sunlight and fresh air!

Every year about 430 babies who are born at WRH have to stay in the Neonatal Intensive Care Unit due to complications. They are there for an average of 13 days, though many have to stay more than a month.

In addition, about 540 children who receive paediatric care at WRH every year, live more than 50 miles away from the hospital.

We look forward to offering their families a comfortable place to stay in this new, home away from home and are thankful for the Ronald McDonald House Charities for making this possible.

WINDSOR REGIONAL HOSPITAL FRONTLINE TRIBUNE

To contribute a news tip, story or advertisement in the next issue, please email us at:
frontlinetribune@wrh.on.ca

Ron Foster, Editor
ron.foster@wrh.on.ca
519-254-5577 ext. 52003

Gisele Seguin
gisele.seguin@wrh.on.ca
519-254-5577 ext. 52008

Steve Erwin
steve.erwin@wrh.on.ca
519-254-5577 ext. 33350

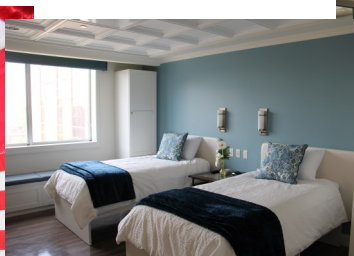
David Lenz
david.lenz@wrh.on.ca
519-254-5577 ext. 32539



[facebook.com/windsorregionalhospital](https://www.facebook.com/windsorregionalhospital)



@WRHospital



Visit our website for more information at www.wrh.on.ca



UPCOMING EVENTS

- MAY 30** **CIBPA Charity Golf Classic**
Time: 10:00am
Pointe West Golf Club
200 Golfwood Drive, Amherstburg
- JUN 08** **National Bank Baseball Fundraiser**
Time: 12:00pm - 3:00pm
Walkerville Brewery
525 Argyle Road, Windsor
- JUN 09** **WRH Annual Golf Tournament**
Essex Golf & Country Club
7555 Matchette Road, LaSalle
- JUN 11** **Car Seat Clinic**
Time: 10:00am
Formula First Collision
9420 Tecumseh Rd. E
- JUN 22** **A Day For A Life Golf Tournament**
Time: 10:00am
Kingsville Golf & Country Club
- JUL 09** **International Dragon Boat Races**
Waterfront Park
13451 Riverside Drive East, Tecumseh
- JUL 12** **Blood Pressure Screening Clinic**
Time: 12:00pm - 3:00pm
Met Campus, Vendor Hallway
- AUG 09** **Blood Pressure Screening Clinic**
Time: 12:00pm - 3:00pm
Ouellette Campus, Vendor Hallway
- SEP 10** **Car Seat Clinic**
Time: 10:00am
Windsor Fire Station #7
1380 Matthew Brady Avenue
- OCT 11** **Blood Pressure Screening Clinic**
Time: 12:00pm - 3:00pm
Met Campus, Vendor Hallway



Listeria causes mild illness in healthy adults and children, but can be severe and life threatening in the immune compromised elderly, fetuses, and newborns. The incubation period can be 3-70 days following exposure.

Nursing Excellence Recognized At Awards Event

Nurses at Windsor Regional Hospital and Hôtel-Dieu Grace Healthcare were honoured during Nurses Week at a special ceremony to recognize nursing excellence and continuing education efforts.

Winners of the Jeanne Mance Extraordinary Nursing Care Awards, go to a nurse who continually goes above and beyond to provide compassionate and professional care to patients and exemplifies teamwork, compassion, stewardship and respect. The WRH winners were Lina Akile and Jane Simanovski, while Taskia Cartier and Natalie Zegarac received recognition from HDGH.

Four nurses were also named as the recipients of the annual Lori Dupont Bursary, which assists staff with continuing education costs. Each successful candidate is awarded up to \$1,000. The WRH Bursary recipients – whose names were put forward by ONA local 8 - were Andreea Duma and Sharra Hodgins. Sue Ladouceur and Sheryl Johnston received bursaries from HDGH.

WRH also announced its latest winners of the Daisy Award, which is presented to nurses who demonstrate excellence in the profession, as nominated on behalf of the patients they served. The Daisy Award winners were Krista Shamblaw, Jackie St. Denis and Martin Gagne.

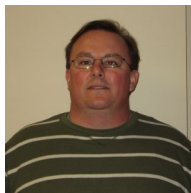
As well, WRH's Diversity Committee also announced Erikka Johnson as its Global Mitra award winner.



Top Photo (l to r): (front row from left) Erikka Johnson, Sue Ladouceur, Sheryl Johnston, Jane Simanovski, Janet Bezaire and Linda Akile. (Back row from left) Taskia Cartier, Sharra Hodgins, Natalie Zegarac, Krista Shamblaw, Jacqueline St. Denis and Andreea Duma. Absent was Martin Gagne.

Bottom Left Photo (l to r): Erikka Johnson with Aruna Koushik
Bottom Right Photo (l to r): Natalie Zegarac and Karen McCullough.

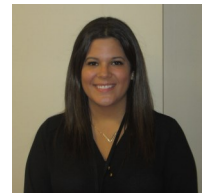
INTRODUCING NEW FACES AT WINDSOR REGIONAL HOSPITAL



Charles Campbell
PHARMACY TECHNICIAN
PHARMACY



Lynette Vitale
PAYROLL CLERK
FINANCE



Nicole Coppola
UNIT CLERK
DAY SURGERY



Emma McGroy
SUMMER STUDENT SUPERVISOR
GUEST SERVICES



Muesli Lentil Breakfast Strata

Makes 12 servings
Preparation: 10 min
Cooking Time: 45 min



INGREDIENTS

- 1 Tbsp unsalted butter
- 8 cups cubed whole wheat bread
- 1 1/2 cup diced Gala apples
- 1 1/2 cup green lentils, drained & rinsed
- 1 cup dried cranberries
- 1 cup rolled oats (reserve some for topping)
- 1 cup chopped pecans (reserve some for topping)
- 6 eggs
- 1 cup 2% milk
- 6 Tbsp honey
- 1 tsp cinnamon
- 1 tsp vanilla
- 1/4 tsp salt
- 1 cup Greek yogurt

METHOD

PREHEAT the oven to 350°F (180°C) and butter a 9x13 inch (22x33 cm) baking dish. COMBINE bread, lentils, apple, cranberries, rolled oats, and pecans in a large bowl. In a separate bowl, whisk together eggs, milk, honey, cinnamon, vanilla, and salt. Pour milk mixture over bread mixture and combine thoroughly until the bread is no longer dry. Evenly spread mixture into prepared baking dish and sprinkle with rolled oats and pecans. Bake for 35-40 minutes, or until cooked in the centre. Allow to cool for 5 minutes. Spoon into bowls and serve with a dollop of your favourite yogurt.

Source: Dietitians of Canada, Cookspiration website:
www.cookspiration.com

NUTRIENTS Per Serving

Calories: 370; Protein: 14g; Total Fat: 14 g; Carbohydrates: 47g;
 Sodium 280 mg

WRH 2 by 4 Video Contest

The video contest is open to all staff (employees, volunteers, professional staff and affiliates).

Entries will be accepted from groups or individuals.

Visit the 2 by 4 (Intranet Homepage) for an instructional video!

The subject of the video must be WRH's 2 by 4 Campaign which highlights – 2 Client Identifier and the 4 Moments of Hand Hygiene. The winning video will be posted to the Hospital website. Please ensure that appropriate consent has been obtained for all those appearing in the video. Videos should be no more than two minutes long.

Send your video by Monday, May 30, to paula.pesce@wrh.on.ca or drop off a memory stick with your name and contact information to the Public Affairs office at either Met or Ouellette Campus.

The winning team or individual will win a \$100 gift certificate to Ted Farron's Gourmet Butcher Shop.

Good luck to everyone!!!

Local Shriners Shine!

Members of the Moramos Shrine Club of Windsor visited Windsor Regional Hospital last week to present a cheque for \$5000 toward Paediatric and NICU Services. The Shriners are an international fraternity established in 1870, focused on raising funds for sick children's hospitals.

"We raise funds from our annual holiday fruitcake sales, keno and circus," said George Minto, President of the Windsor Club.



PHOTO ABOVE:

Members of Moramos Shrine Club of Windsor who include (names not in order of appearance); Noble Bill Lynd, Noble Morton Brodsky, Noble Jim McDonald, Noble Jerry McQuarry, Noble Maurice Howles, Noble Randy MacNevin, Noble Eddie Carey, Noble Jim Chambers, Noble David Kerr, Noble Don Warner and Noble President, George Minto.



Vendors On Display This Week!

May 16 - 20, 2016

* Please note: Vendors subject to change

MET CAMPUS

Dianes Gifts, Sea Vital, Beauty Control,
 Leamington Medical Supply, Red Door Salon,
 Allstate Insurance, Casual Line

OUELLETTE CAMPUS

Diane's Gifts, Maxim Medical,
 Casual Line, Funky Living

INVITATION

Bring your friends and coworkers.

Join us to celebrate spring watching the **Detroit Tigers** and **Toronto Blue Jays**. **FREE PIZZA LUNCH** will be provided as we raise money for the Windsor Regional Hospital Foundation.

Date: June 8th, 2016

Location: Walkerville Brewery
525 Argyle Road
Windsor ON N8Y 4Z8



Time: 12 noon – 3 p.m.

Event: Celebrate Spring watching the Tigers vs Blue Jays and support Windsor Regional Hospital

Sponsored by: National Bank Financial and The Mallender Wealth Management Group

Donations at the door are appreciated and 100% go to Windsor Regional Hospital Foundation.
www.mallenderwealth.ca



National Bank Financial is an indirect wholly-owned subsidiary of National Bank of Canada which is a public company listed on the Toronto Stock Exchange (NA: TSX). National Bank Financial is a member of the Canadian Investor Protection Fund (CIPF).

TREVOR SAVED THREE LIVES. WILL YOU?



Ontario's Organ and Tissue Donation Agency

beadonor.ca

www.facebook.com/trevor.funkenhauser

YOU ARE INVITED



**A QUALITY - 11 DAY
CUSTOM DESIGNED & ESCORTED TOUR**

ICELAND and NORWAY

and the **NORWEGIAN COASTAL CRUISE** (HURTIGRUTEN)

Departing September 24, 2016

TICO 50015768

ACCOMMODATIONS	RATES	WRHF SPECIAL RATES
Upper Deck (5) Stateroom	\$ 4,395	\$ 4,195
Center Deck (3) Stateroom	\$ 4,315	\$ 4,115
Lower Deck (2) Stateroom	\$ 4,310	\$ 4,110

Price includes all airfares from Toronto, sight seeing tours and all meals.



Make your deposit of \$200 per person NOW. Final payments are due July 15, 2016. Taxes included. Port charges are included. All rates are in U.S. dollars.

Southland Travel

23 Talbot Street North, Essex, Ontario, N8M 1A5
Phone: 519-776-9336 / 519-776-6928 / www.southlandtravel.ca

JUST CHARGE IT!

WRH Employees may obtain a payroll debit card that allows them to purchase items from our cafeterias.

Now available at both the Ouellette and Met Campuses. Employees at the Met Campus who have an existing card can still use this card for Subway and the Daily Grill, but they will need to request a new card for use at the Tim Hortons' kiosk. Charges are deducted every two weeks and the total will be indicated on your pay stub.

The new cards can be used at the Tim Hortons at Met, the Ouellette Tim Hortons and the Armandos' Cafe at the Ouellette campus.



For more information or to order a card, please contact:

Michelle Caron

Retail Supervisor, Guest Services Network
Phone: 519-254-5577 Ext. 52232
Cell Phone: 519-995-7644
E-mail Address: Michelle.Caron@wrh.on.ca



CIBPA CHARITY GOLF CLASSIC

Monday May 30, 2016

Pointe West Golf Club

200 Golfwood Drive

Amherstburg, Ontario; N9V3T4

Registration - 10:00 am

12:00 noon shot-gun start

Golfers -	\$780 per Foursome
Individual Golfer -	\$195
Corporate Foursome -	\$850
Hole Sponsor -	\$150
Dinner Guests -	\$ 50



Includes: Golf & Cart; Lunch; BBQ Dinner, Sausage / Hot Dog on the Turn; Gift Prize, Locker Room Facilities, Practice Range, putting & chipping greens

Raffle & Auction Prizes Include: Foursome w/ cart; Caravelle Watch by Bulova; Up to \$5,000 towards a one year membership

Proceeds will be Donated to:

DREAM CLIMB 2016

Tournament Sponsors:



For More Information

Tony Papatello - 519 944 7878 or Frank Mocerri - 519 796 2271