



FRONTLINE MARCH 11, 2019

TRIBUNE

VOLUME 7 / EDITION 9



COMPASSION is our
PASSION



The FRONTLINE TRIBUNE is a publication of the Public Affairs and Communications Office of Windsor Regional Hospital

IN THIS WEEK'S ISSUE

- 1 • STUDENTS LEARN ABOUT ORGAN AND TISSUE DONATION
• VENDORS ON DISPLAY
- 2 • WORLD KIDNEY DAY - MARCH 14
• SCHEDULE OF EVENTS
• NEW FACES AT WRH
- 3 • ANOTHER RESOUNDING SUCCESS FOR HATS ON FOR HEALTHCARE
- 4 • WRH LUNCH & LEARN
• RECIPE OF THE WEEK
• RUBY'S WINGS
• WE NEED YOUR INPUT

Students Learn About Organ And Tissue Donation

Dozens of high school students gathered at Met Campus last Thursday to learn about the importance of organ and tissue donation and the challenge of getting more people in our community to register their consent to save lives.

The students from Vincent Massey Secondary School and Belle River District High School learned about the local registration rates in Windsor which remain below the provincial average, and about some of the many myths that continue to exist on the subject of organ donation.

Many were moved by the personal stories and video segments shown, as well as the discussions that included touching words from Debra and Scott Purdy, whose late son Jacob saved five lives through organ donation.

The students were split into several groups and asked to come up with ideas on how to better promote organ and tissue donation awareness throughout our community. Some great ideas were generated!

WRH is an active promoter of organ and tissue donation alongside our partners at Trillium Gift of Life Network and Windsor-Essex Gift of Life Association. April is organ and tissue donation awareness month so stay tuned for more details on our efforts to promote this issue within our community. Most importantly, if you haven't registered your consent, go to **BeADonor.ca** for details!

WINDSOR REGIONAL HOSPITAL FRONTLINE TRIBUNE

To contribute a news tip, story or advertisement in the next issue, please email us at:
frontlinetribune@wrh.on.ca

Ron Foster, Editor
ron.foster@wrh.on.ca
519-254-5577 ext. 52003

Gisele Seguin
gisele.seguin@wrh.on.ca
519-254-5577 ext. 52008

Steve Erwin
steve.erwin@wrh.on.ca
519-254-5577 ext. 33350

David Lenz
david.lenz@wrh.on.ca
519-254-5577 ext. 32539



[facebook.com/windsorregionalhospital](https://www.facebook.com/windsorregionalhospital)



[@WRHospital](https://twitter.com/WRHospital)



Photo: Students from Vincent Massey Secondary School and Belle River District High School.

VENDORS ON DISPLAY - MARCH 11-15, 2019

Met Campus: Custom Essentials, Funky Living, Magnolia & Vine, Silver n Such, Stuff n Bears
Ouellette Campus: Freak Parade

Please note: Vendors subject to change.

Visit our website for more information at www.wrh.on.ca



UPCOMING EVENTS

APRIL 1-7, 2019

National Ethics Week

APRIL 3, 2019

Challenging The Myth - Consent & Capacity

Met Campus - Auditorium Side A
Ouellette Campus - Windsor Room
RSVP at Maria.Distefano@wrh.on.ca

APRIL 7, 2019

Ruby's Wings Craft Show

Kingsville Arena, 1741 Jasperson Dr, Kingsville

APRIL 11, 2019

Volunteer Appreciation Party

Riverside Sportmen's Club
10835 Riverside Drive East, Windsor

MAY 23, 2019

WRHF Annual Golf Tournament

Essex Golf & Country Club
7555 Matchette Road, LaSalle

JUNE 9, 2019

Corvette Club Car Show

Dieppe Park, Riverside Drive, Downtown

JUNE 19, 2019

Funkenhauser Family - A Day For A Life Golf Tournament

Kingsville Golf & Country Club
640 County Road 20, Kingsville

JUNE 22, 2019

Sail Into Summer Dinner

Windsor Yacht Club
9000 Riverside Drive East, Windsor

JULY 20, 2019

Rafih Auto Group Golf Tournament

Beachgrove Golf & Country Club
14134 Riverside Dr E, Windsor



Influenza A(H1N1)pdm09 was the predominant strain this flu season with a higher proportion of laboratory detections, hospitalizations and outbreaks among people under the age of 65.

World Kidney Day - March 14, 2019

850 MILLION PEOPLE WORLDWIDE are now estimated to have kidney disease from various causes. Chronic kidney diseases (CKD) cause at least 2.4 million deaths per year and are now the 6th fastest growing cause of death.

Acute kidney injury (AKI), an important driver of CKD, affects over 13 million people worldwide and 85% of these cases are found in low and middle-income countries (LMICs). Around 1.7 million people are estimated to die annually because of AKI.

Moreover, CKD and AKI are important contributors to increased morbidity and mortality from other diseases and risk factors including cardiovascular disease, diabetes, hypertension, obesity, as well as infections such as HIV, malaria, tuberculosis and hepatitis. Furthermore, CKD and AKI in children, not only lead to substantial morbidity and mortality during childhood, but also result in medical issues beyond childhood.

Despite the growing burden of kidney disease worldwide, kidney health disparity and inequity are still widespread. CKD and AKI often arise from the social conditions in which people are born, grow, live, work and age, including poverty, gender discrimination, lack of education, occupational hazards and pollution among others.

Transplantation is considered the most cost-effective treatment of CKD. However, it has high set up costs with regards to infrastructure and requires highly specialized teams, availability of organ donors and cannot be done without dialysis backup. Physical and legal infrastructure requirements and cultural bias against organ donation often present barriers in many countries, making dialysis the default option.

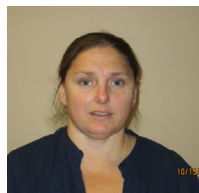
However, while national policies and strategies for non-communicable diseases (NCDs) in general are present in many countries, specific policies directed toward screening, prevention and treatment of kidney diseases are often lacking. More than half (53%) of countries that have an overarching NCD strategy in place have no management guidelines or strategy for improving the care of people with CKD (either specifically or within a broader NCD strategy).

This year, World Kidney Day sets out to raise awareness of the high and increasing burden of kidney diseases worldwide, and the need for strategies for kidney diseases prevention and management.

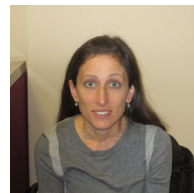
For more information on World Kidney Day, please visit www.worldkidneyday.org.



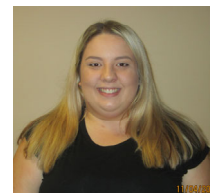
INTRODUCING NEW FACES AT WINDSOR REGIONAL HOSPITAL



Lisa Brown
PATIENT REGISTRATION
PORTER
GUEST SERVICES



Marla Fata
SOCIAL WORKER
MENTAL
HEALTH



Jillian Dolianitis
REGISTERED PRACTICAL
NURSE
MEDICINE



Dr. Joseph Thomas
PHYSICIAN
SURGICAL
DEPARTMENT

Another Resounding Success for Hats On For Healthcare!

The 10th Anniversary of Hats On For Healthcare was another resounding success due to the amount of interest and interaction throughout the day on March 5th.

The day included music, live radio remote, guest appearances and several donations received in support of the Diagnostic Imaging Departments at the Met and Ouellette Campuses of Windsor Regional Hospital. Congratulations to Diagnostic Imaging (Met) and SOP/Learning Resources (Ouellette) for winning the group participation pizza party!

Thanks to all who participated and made a gift to this annual great cause!



LUNCH AND LEARN

CHALLENGING THE MYTH - CONSENT AND CAPACITY

April 3, 12-1pm
Auditorium Side A (Met)
video conferenced to
Windsor Room (Ouellette)

RSVP: Maria Distefano x 37617
Lunch will be provided



Dr. Wally Liang

Presented by: The Patient Experience Task Force and The Ethics Committee

National Ethics Week April 1-7, 2019



WORLD KIDNEY DAY - MARCH 14, 2019

#RECIPEOFTHEWEEK

The "No" Banana Split Smoothie

Bananas are a favourite fruit of people all over the world. However, bananas are not suitable for everybody, because they are rich in potassium. For most of the Chronic Kidney Disease patients, it is not recommended to eat bananas. People that have kidney disease often miss having a banana. This recipe will taste like you are having bananas without having the potassium.



Makes 2 servings
Preparation: 10 min

INGREDIENTS

- 1 Bottle of Nepro (237ml)
- 1/2 tsp banana extract
- 1/2 cup frozen strawberries
- 1/4 cup chopped fresh peeled pineapple

DIRECTIONS

Combine all ingredients in the jar of a blender. Blend on high until smooth. Serve immediately.

NUTRIENTS Per Serving

Calories: 235; Protein: 10g; Total Fat: 11 g; Carbohydrates: 25g; Sugar 6g; Fibre 3g; Sodium 127mg; Potassium 264 mg; Phosphorus 97mg



CRAFT SHOW FUNDRAISER

Proceeds to benefit Perinatal Loss and Bereavement at Windsor Regional Hospital (Met Campus).

Sunday April 7 | 10:00am-3:00pm
Kingsville Arena 1741 Jasperson Dr, Kingsville



This event is free to attend and will have 30 vendors, food for purchase, a silent auction, and children's activities and entertainment. We will be accepting donations.

For more information please email rubyswingsfundraiser@gmail.com or find us on

THANK YOU TO OUR SPONSORS



The Public Affairs team is in the process of redeveloping the WRH intranet to give you easier access to the information and resources you require at Windsor Regional Hospital.

Please take a few minutes to help us best meet your communication needs as we move forward with this project by filling out the communication/intranet use survey at the link below. It can be completed in 5 minutes or less.

Communications/Intranet Use Survey:

www.wrh.on.ca/IntranetSurvey