



WINDSOR  
REGIONAL  
HOSPITAL

OUTSTANDING CARE – NO EXCEPTIONS!

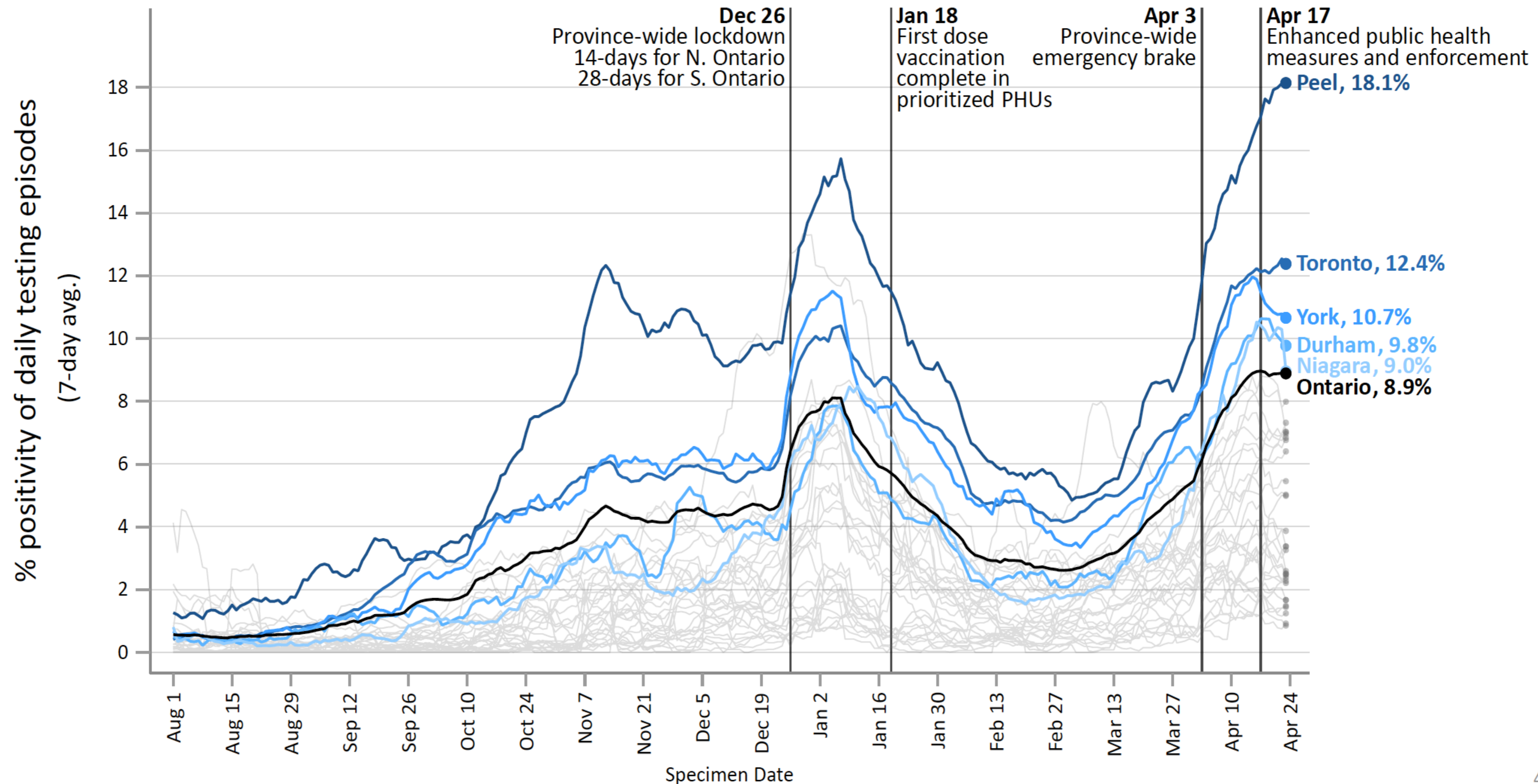
April 29, 2021

WRH TOWNHALL  
Slides from OHA, WECHU and  
Ontario Science Advisory Table



# Positivity Rate

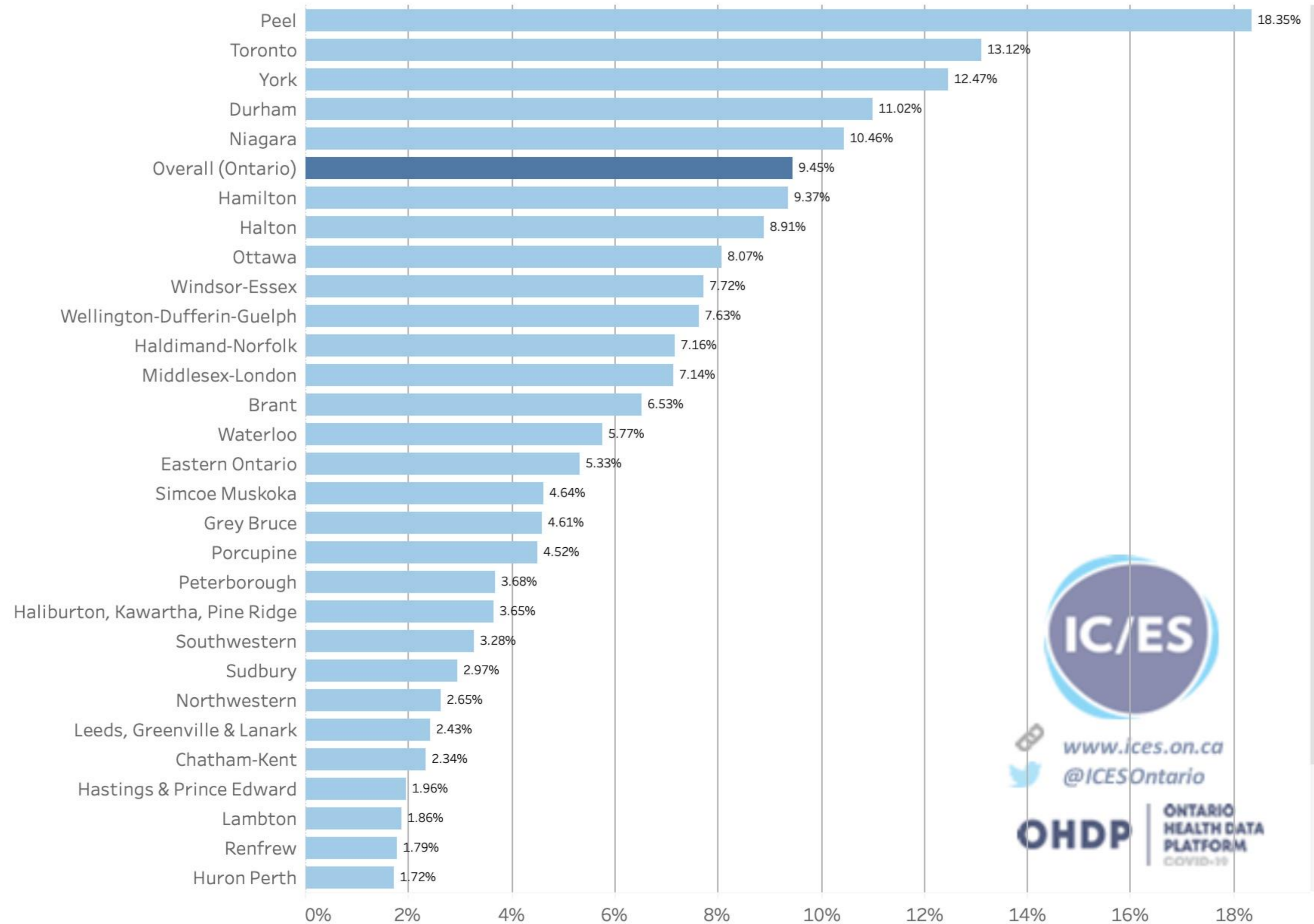
## Test positivity rates are still high across Ontario



Data source: Ontario Laboratory Information System (OLIS), data up to April 23

# % Positivity Rate Ontario

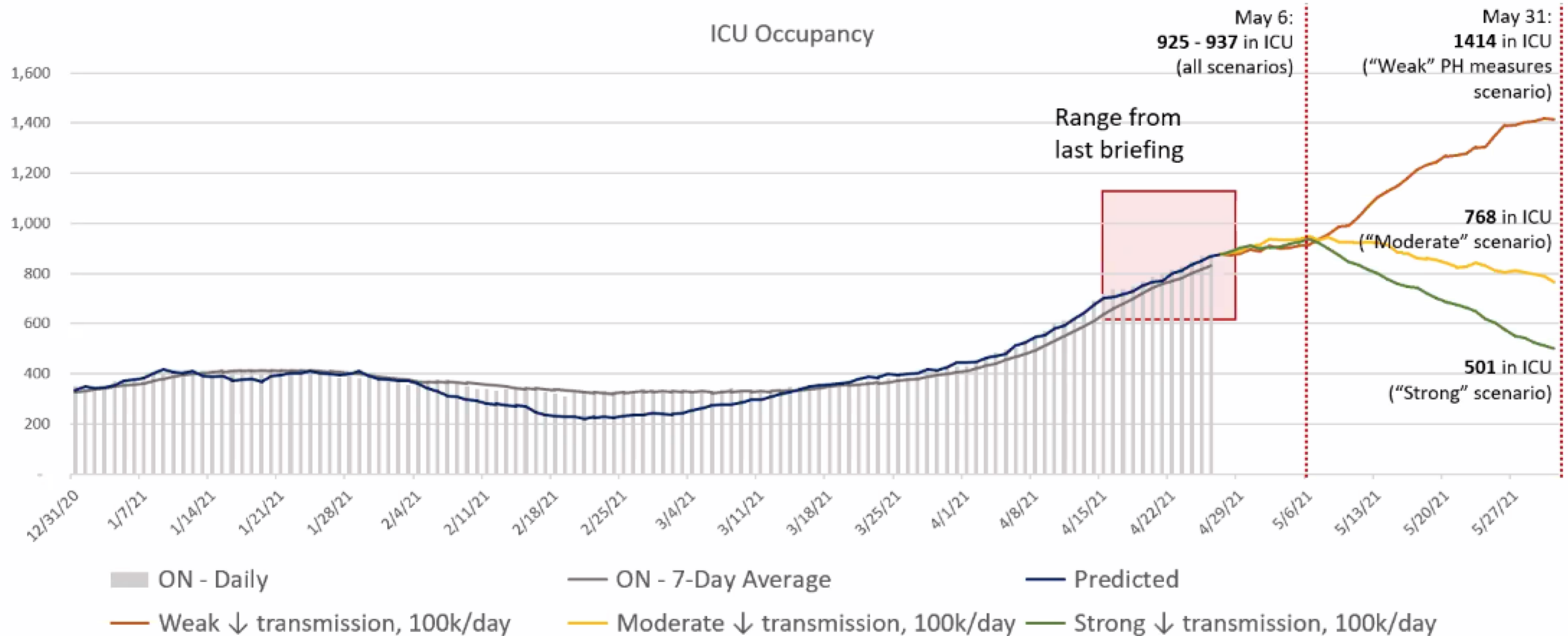
Weekly percent positivity for COVID-19 in the 34 Public Health Units in Ontario





# Hospital Capacity and Projections: Critical Care

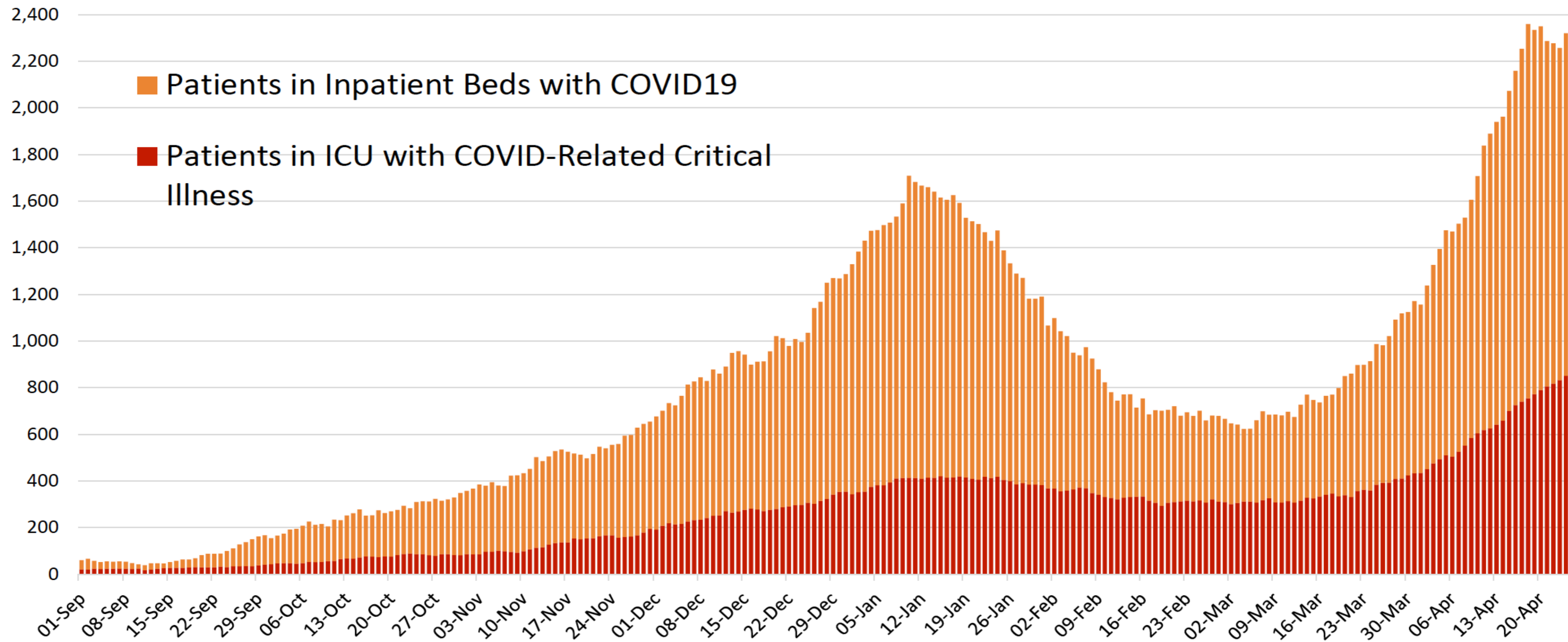
All data as of April 29, 2021



Predictions: COVID-19 ModCollab.  
Data (Observed ICU Occupancy): CCSO

# Weekly Average COVID-19 Hospitalizations – Record High

## Hospitalizations are flattening but ICU occupancy will continue to rise



# Transfers as of 12:01 am April 30

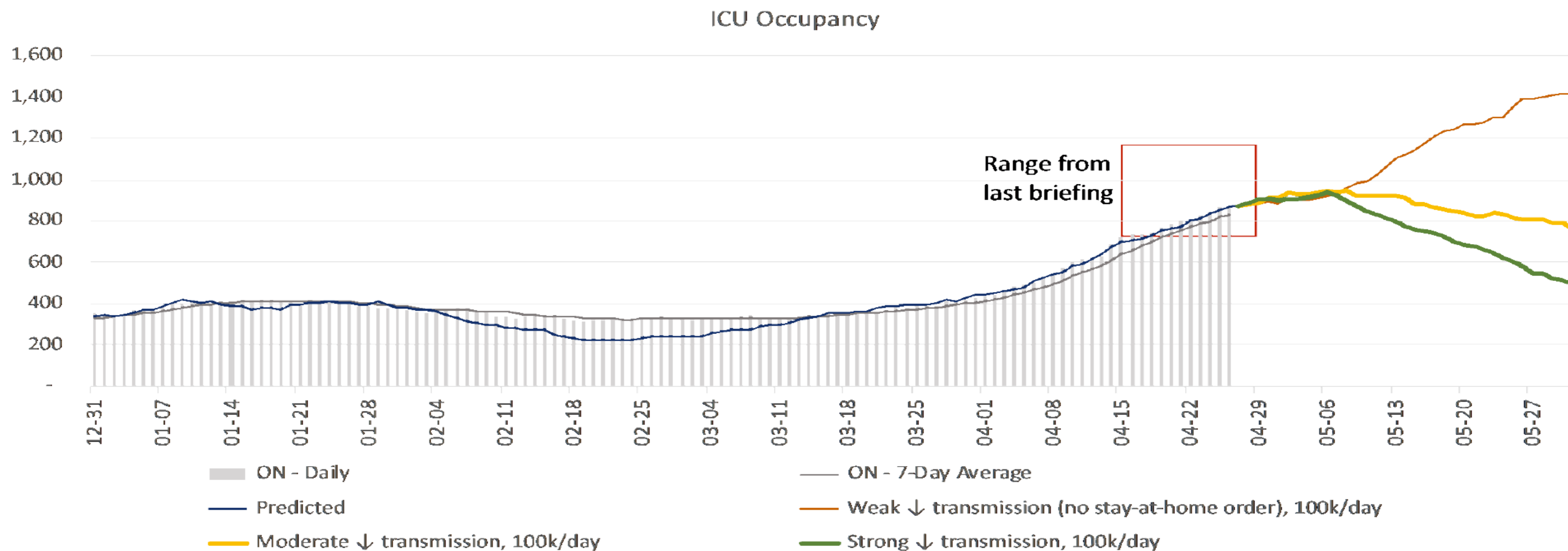
30 Ward/Medicine Patients (5 more planned today)

12 ICU Patients ( 2 more planned today)

5 discharged home (2 more planned today)

3 Ward/Medicine transferred to ICU

ICU occupancy continues to rise. It will remain above the level necessary to restart surgeries for some time.





## Phase Two Schedule for COVID-19 Vaccine Booking Eligibility

The following is the anticipated schedule to expand COVID-19 vaccine eligibility for booking over the next month based on current understanding of vaccine deliveries, to be further evaluated in light of supply.

	Wk. of April 26	Wk. of May 3	Wk. of May 10	Wk. of May 17	Wk. of May 24
Allocation Method <sup>1</sup>	<ul style="list-style-type: none"> <li>75% all PHU + 25% to hot spots</li> </ul>	<ul style="list-style-type: none"> <li>50% all PHU + 50% to hot spots</li> </ul>	<ul style="list-style-type: none"> <li>50% all PHU + 50% to hot spots</li> </ul>	<ul style="list-style-type: none"> <li>Allocation on a per capita basis<sup>3</sup></li> </ul>	<ul style="list-style-type: none"> <li>Allocation on a per capita basis<sup>3</sup></li> </ul>
Provincial Age Band	<b>April 30:</b> <ul style="list-style-type: none"> <li>Age band to 55+</li> </ul>	<ul style="list-style-type: none"> <li>Age band to 50+</li> </ul>	<ul style="list-style-type: none"> <li>Age band to 40+</li> </ul>	<ul style="list-style-type: none"> <li>Age band to 30+</li> </ul>	<ul style="list-style-type: none"> <li>Age 18+</li> </ul>
Hot Spot Age Band	<b>April 27:</b> <ul style="list-style-type: none"> <li>Age band to 45+ in hot spots<sup>2</sup></li> </ul>	<ul style="list-style-type: none"> <li>Age band to 18+ in hot spots</li> </ul>			
Health Conditions	<ul style="list-style-type: none"> <li>Highest-risk health conditions - continues</li> </ul>	<ul style="list-style-type: none"> <li>High-risk health conditions</li> </ul>	<ul style="list-style-type: none"> <li>At-risk health conditions</li> </ul>		
Cannot Work from Home	<b>April 29:</b> <ul style="list-style-type: none"> <li>Licensed childcare workers</li> </ul>	<ul style="list-style-type: none"> <li>Cannot work from home Group 1</li> </ul>	<ul style="list-style-type: none"> <li>Cannot work from home Group 2</li> </ul>		

### Notes:

<sup>1</sup> Does not include 116K J&J doses or additional AstraZeneca doses; AstraZeneca eligibility remains at 40+

<sup>2</sup> PHUs can continue to target 18+ in hot spots through alternate channels (e.g., hospital clinics and pop-up clinics)

<sup>3</sup> The per capita allocation will be calculated based on the remaining eligible population in each region to ensure equality of access across the province.



**You've worn out the treads on your shoes since  
March 2020...  
so let us pamper them with this...**



# Here's How It Works

Price LESS 25% PLUS taxes (13%) LESS \$50 Voucher = Total

For Example:

Shoes Cost (Regular Priced Items In-Store)

**\$144.99**

Minus - 25% Off Regular Price

- \$36.25

Add Tax of 13%

+ \$14.14

Total Before Voucher Discount

\$122.88

Minus \$50 WRH payment

**WHAT YOU PAY \$72.88**

