

Friday, February 16th

Back to Basics: The QBP Pathway Improvement Program

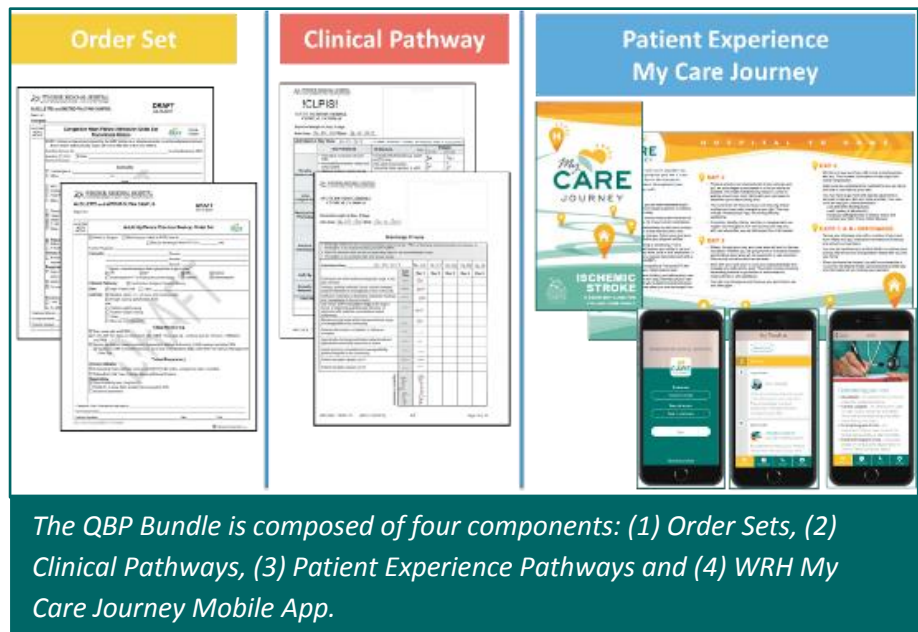
Six months ago, patients began benefiting from standardized care and communication as part of the **QBP Pathway Improvement Program**. The Quality Based Procedures (QBP) program applies to groups of patients with similar conditions that can benefit from a focus on quality care and improved communication. At Windsor Regional Hospital, this is delivered using physician Order Sets, care team Clinical Pathways and innovative Patient Experience Pathways.

Patients admitted with any of the primary diagnoses or surgeries listed below should be on the QBP Pathway specific to their condition. All the components of the bundle should be in place, including informing the patient and family members about the new WRH My Care Journey mobile app.

- COPD
- Heart Failure (CHF)
- Pneumonia
- Stroke – Ischemic/CVA & TIA
- Stroke – Hemorrhagic
- Hip Fracture
- Total Hip Replacement
- Total Knee Replacement

Some important things to remember:

- ✓ Each patient with a primary diagnosis of one of the QBPs should be on the QBP Pathway. All the components of the pathway bundle should be used while they remain on pathway.
- ✓ Even if the Order Set is not used, the other components must be used for patients with a QBP diagnosis.
- ✓ Bring the completed Clinical Pathways to Care Rounds. The Pathway documents inform the Plan of Care discussed at Care Rounds, and is brought back to the patient's White Boards.
- ✓ Print the Patient Experience Pathway in French, Arabic, Italian and Spanish at WRHCareJourney.ca
- ✓ The **WRH My Care Journey** mobile app must be communicated to patients and family members. It has valuable information at the patient's fingertips specific to their condition. Download it for yourself to see!



If you have questions, ask your Operations Manager or Clinical Practice Manager, or visit WRHow.ca

Have a great weekend!

The SOP Team

future@wrh.on.ca