

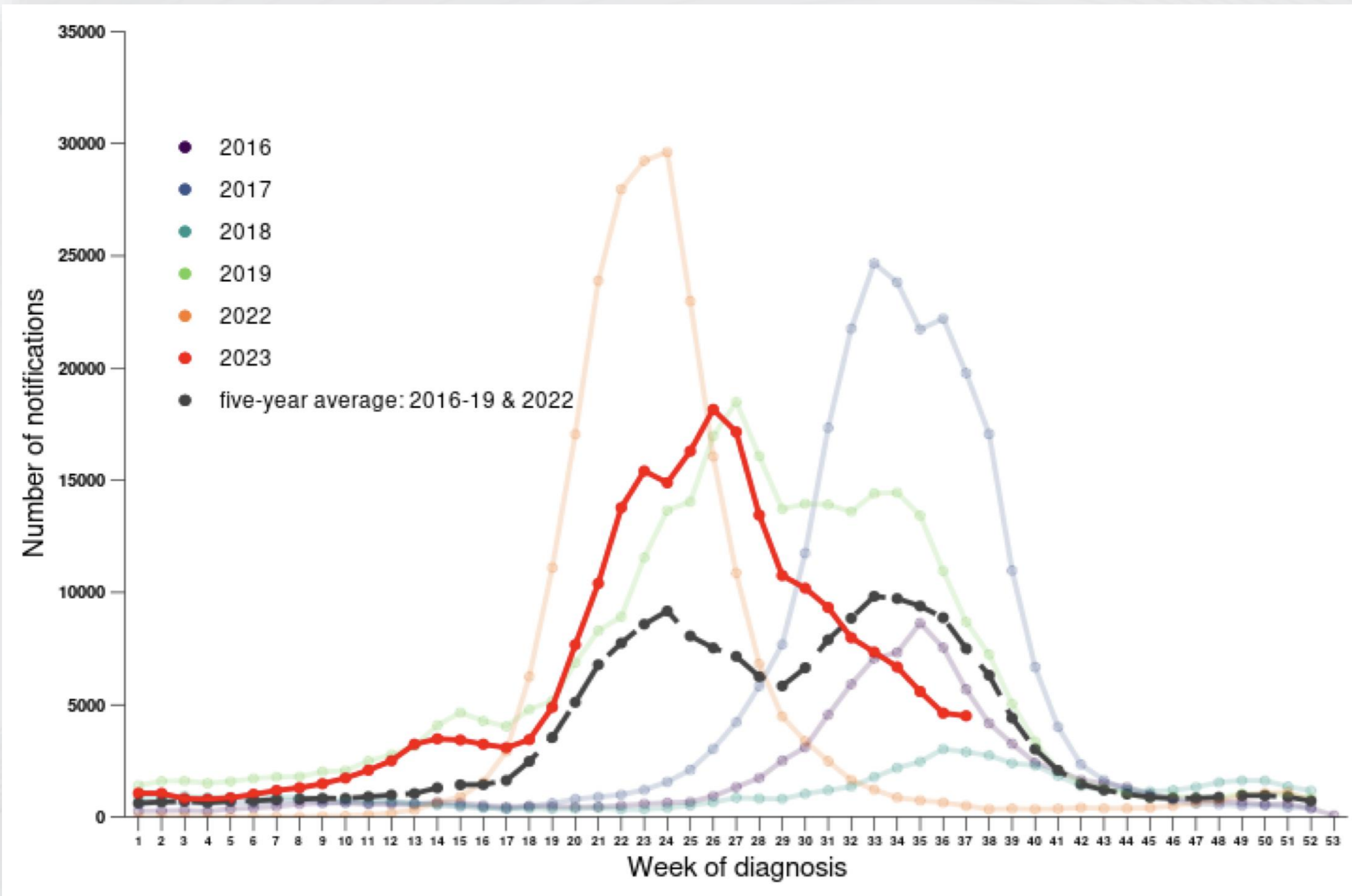


October 2023

BOARD OF DIRECTOR'S MEETING

# Updates on Influenza and COVID-19

## Australia - Influenza, Laboratory Confirmed 2016 to 2023



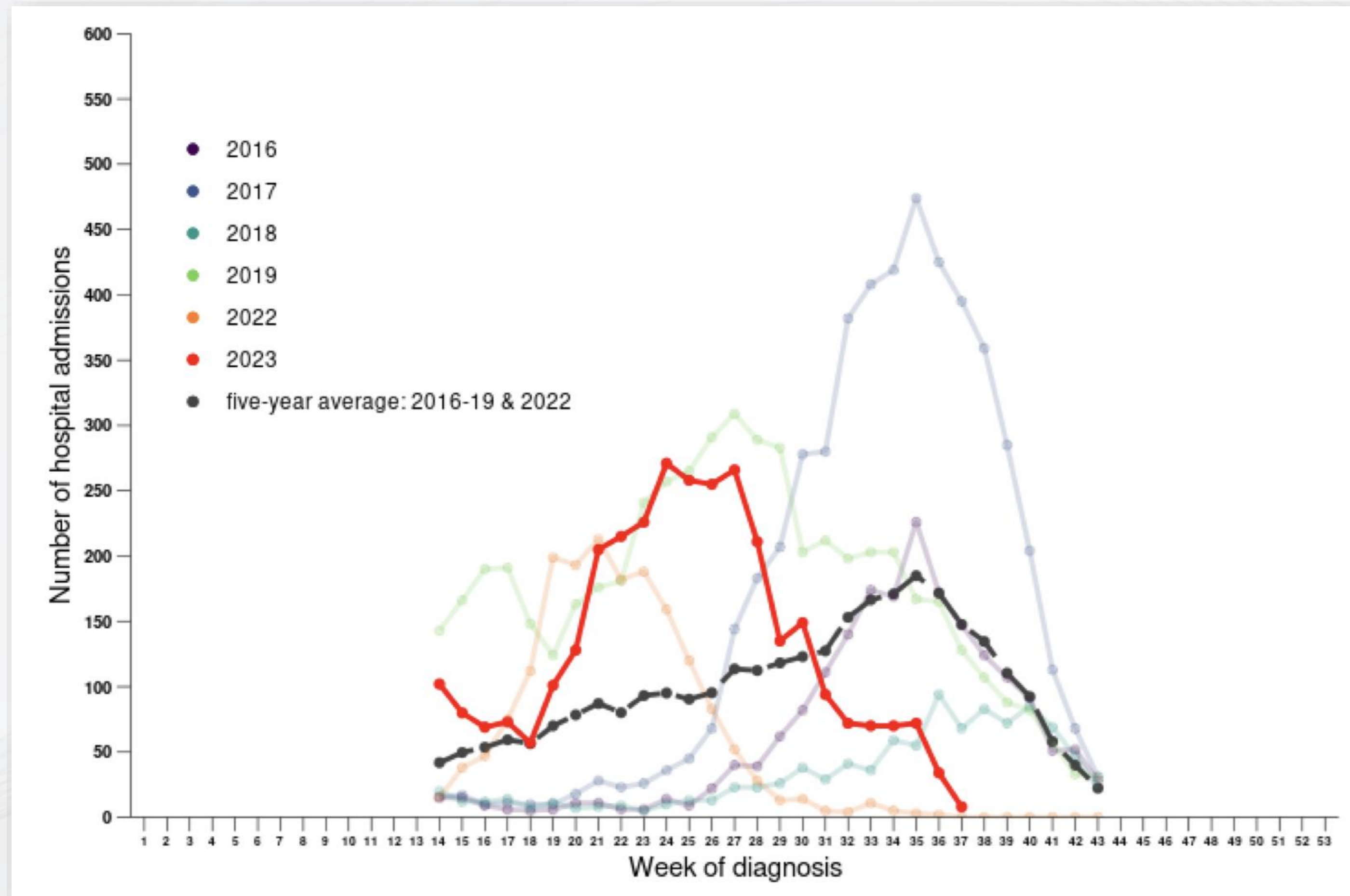
Notifications of laboratory-confirmed influenza, Australia, 1 January 2016 to 17 September 2023, by year and week of diagnosis\*

**Source: NNDSS**

\*NNDSS notification data provided for the current and most recent weeks may be incomplete. All data are preliminary and subject to change as updated are received, with most recent weeks considered particularly subject to revisions. The years 2020 and 2021 are excluded when comparing the current season to historical periods when influenza virus has calculated without public health restrictions. Please refer to data considerations for interpretation of the five year average.

# Updates on Influenza and COVID-19

## Australia - Influenza Hospitalizations 2016 to 2023



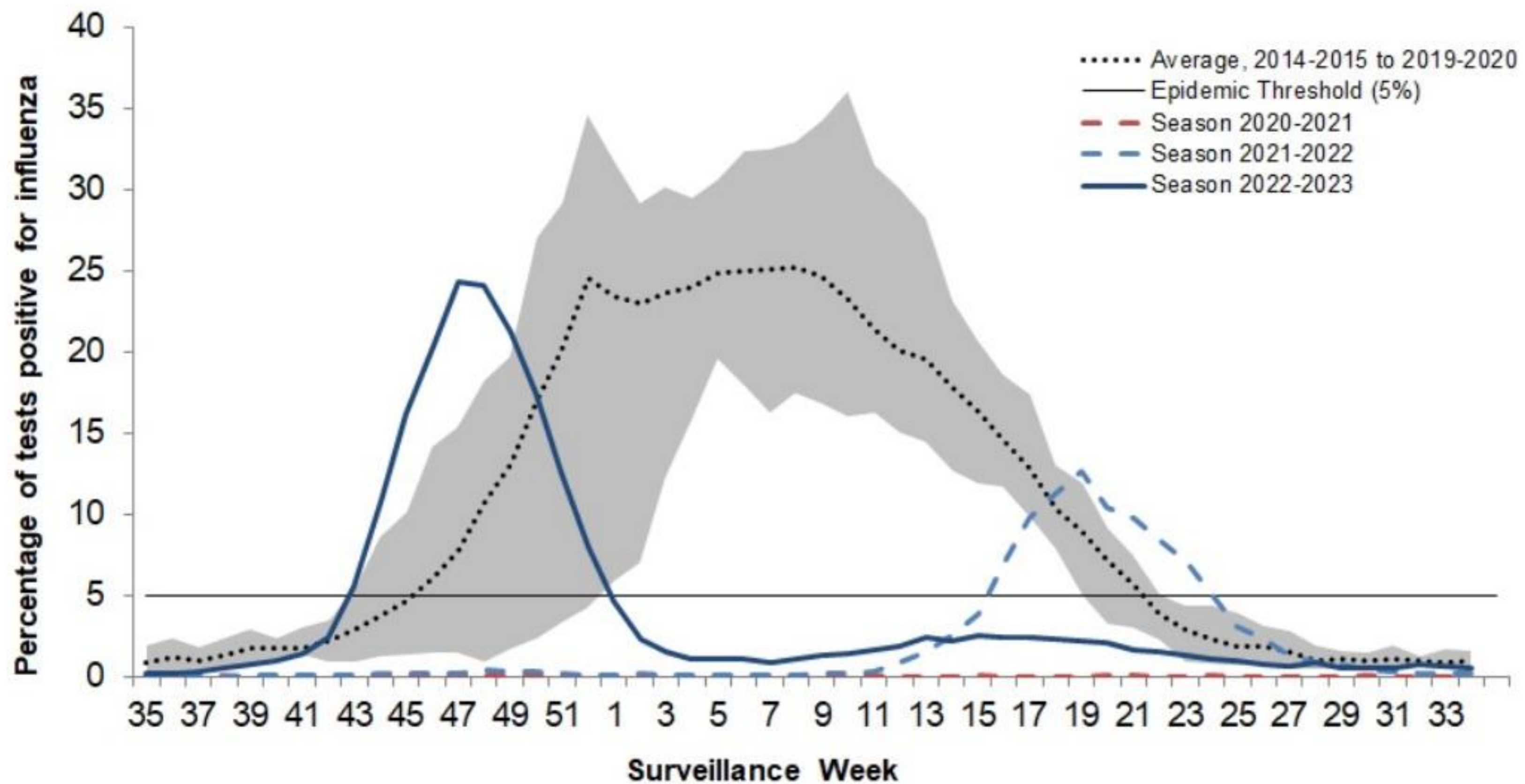
Number of influenza hospitalizations at sentinel hospitals from April to October 2016 to 2023 by year and week of diagnosis\*

**Source: FluCAN**

\*All data are preliminary and subject to change as updates are received, with the most recent weeks considered particularly subject to revisions. The years 2020 and 2021 are excluded when comparing the current season to historical periods when influenza virus has circulated without public health restrictions. Please refer to data considerations or interpretation of the five-year average.

# Updates on Influenza and COVID-19

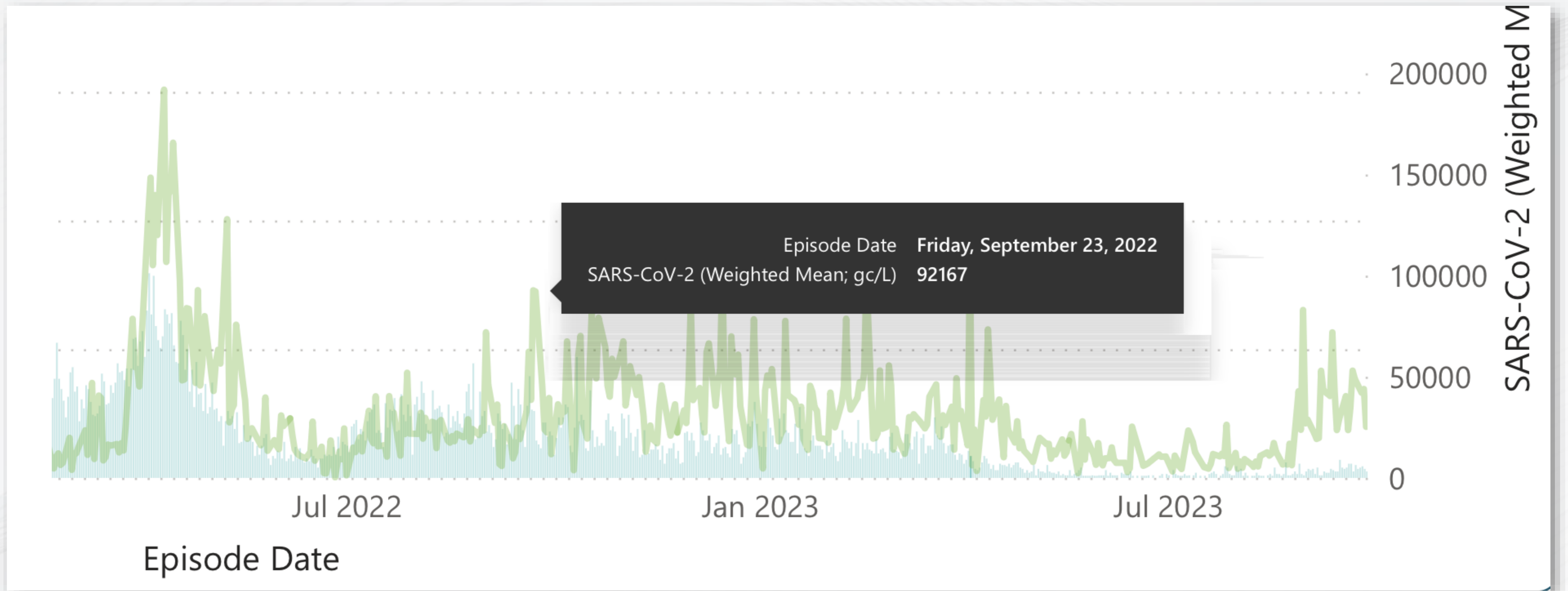
## Canada - Influenza Map 2022-2023



Percentage of tests positive in Canada compared to previous seasons, week 2022-35 to 2023-33

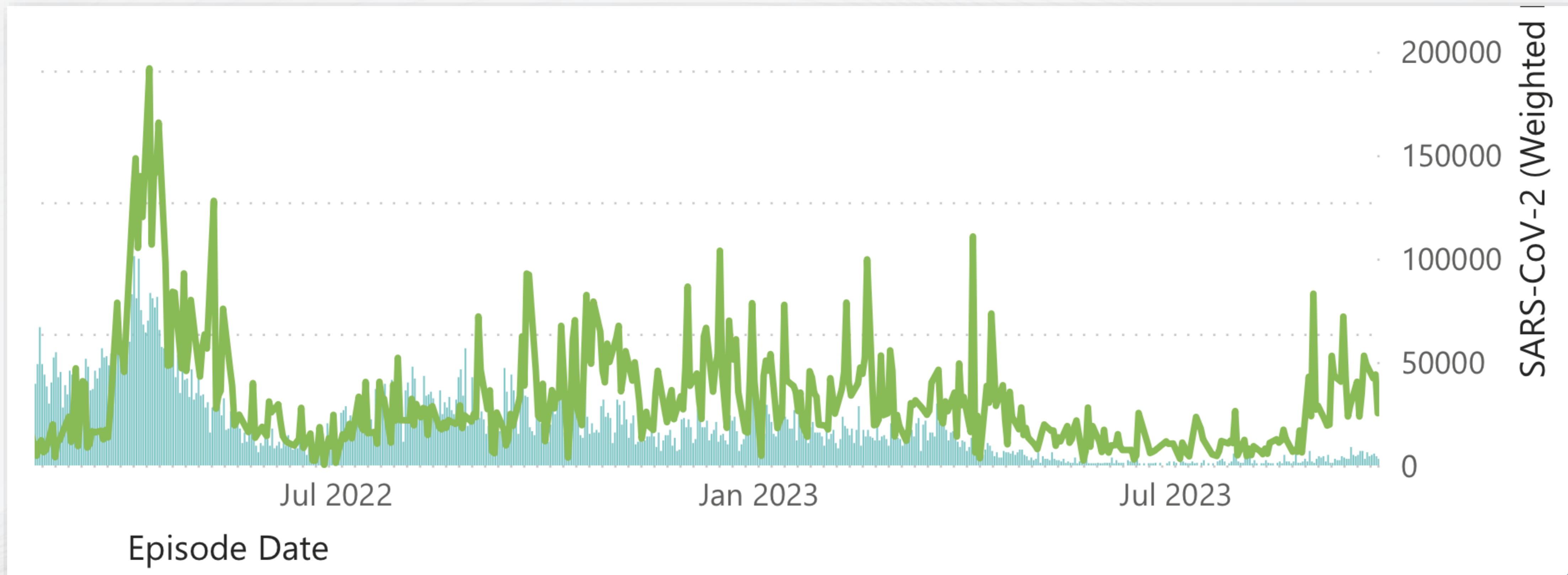
# Updates on Influenza and COVID-19

## COVID-19, Windsor/Essex Wastewater Testing



# Updates on Influenza, COVID-19 and RSV

## COVID-19, Windsor/Essex Wastewater Testing



# Updates on Influenza and COVID-19

## COVID-19 INFORMATION

### Windsor Regional Hospital's COVID-19 Daily Update

Last Updated: October 4, 2023 at 10:30 a.m.

#### WRH IN-PATIENT COVID-19 CASES

Current total # of inpatients in the hospital, including the ICU, with confirmed COVID-19	15
How many of the above inpatients are being primarily treated for COVID-19	15
Current total # of ICU inpatients with confirmed COVID-19	1
How many of the above ICU inpatients are being primarily treated for COVID-19	1

**NOTE:** This data is required to be submitted by WRH to the Ministry of Health. It does not identify the patient's underlying age or health condition due to privacy concerns (i.e. immune-compromised etc.) In addition, this data identifies those in the hospital who are COVID-19 positive and still infectious. Many patients remain in acute care after their infectious period and are not included in these numbers any longer. View provincial hospitalizations data [here](#).

For the total number of Windsor and Essex County residents/patients testing positive for COVID-19 (which includes hospital(s) patients testing positive for COVID-19) go to [Windsor Essex Public Health Information](#).

# Updates on Influenza and COVID-19



COMPASSION is our  
PASSION

OUR VISION: OUTSTANDING CARE - NO EXCEPTIONS!  
OUR MISSION: PROVIDE QUALITY PERSON-CENTRED HEALTH CARE SERVICES TO OUR COMMUNITY.

## Media Release

October 5, 2023  
For Immediate Release

### UPDATE ON HOSPITAL MASKING POLICIES

WINDSOR, ON. \_As a result of a predicted increase in COVID-19 and other respiratory viruses in our community, Windsor Regional Hospital (WRH) is returning to its modified mandatory masking policy that was in place earlier this year.

Effective **Tuesday October 10, 2023** at 12:01 a.m., employees, professional staff, and volunteers are required to wear masks when **within two metres of any patient** unless there is a physical barrier present. Additional personal protective equipment, such as gowns and eye protection, may be required for patients in additional precautions or when a unit is experiencing an outbreak. Signage will be posted on these rooms or units to inform all those who enter about PPE requirements.

We also recommend that visitors mask when **within two metres of patients**. With the exception of symptomatic patients, masking is not required in non-clinical areas, such as main lobbies, waiting areas, cafeterias, and elevators. **Masking is highly recommended for visitors and patients in waiting rooms and lounges in high-risk areas such as Dialysis, the Emergency Department and the Cancer Centre.**

We continue to support those individuals who still choose to wear a mask at any time. All individuals who put on a mask should use a hospital-issued mask. Masks will be provided at hospital entrances.

COVID-19, and other respiratory viruses continue to circulate in our community. Please continue to follow the advice of medical experts when it comes to masking if you are not feeling well, and check with your family practitioner for whether you are due for vaccinations.

We appreciate the public's continued patience and understanding of past and present measures to reduce the opportunity for respiratory virus transmission in our hospital settings.



