

# Post-treatment follow-up for patients with Gynecologic Cancer

Akira Sugimoto

MD

# Goal

To illustrate why follow-up for patients with Gyn Malignancies is extremely important

# Outline

1. Review basic facts pertaining to principles of (gynecologic) oncology

2. Discuss how to apply

1. Cervical / vaginal cytology

2. Imaging

3. Tumor markers

in the follow-up of patients with gynecologic cancer

# Outline

1. Review basic facts pertaining to principles of (gynecologic) oncology

2. Discuss how to apply

1. Cervical / vaginal cytology

2. Imaging

3. Tumor markers

in the follow-up of patients with gynecologic cancer

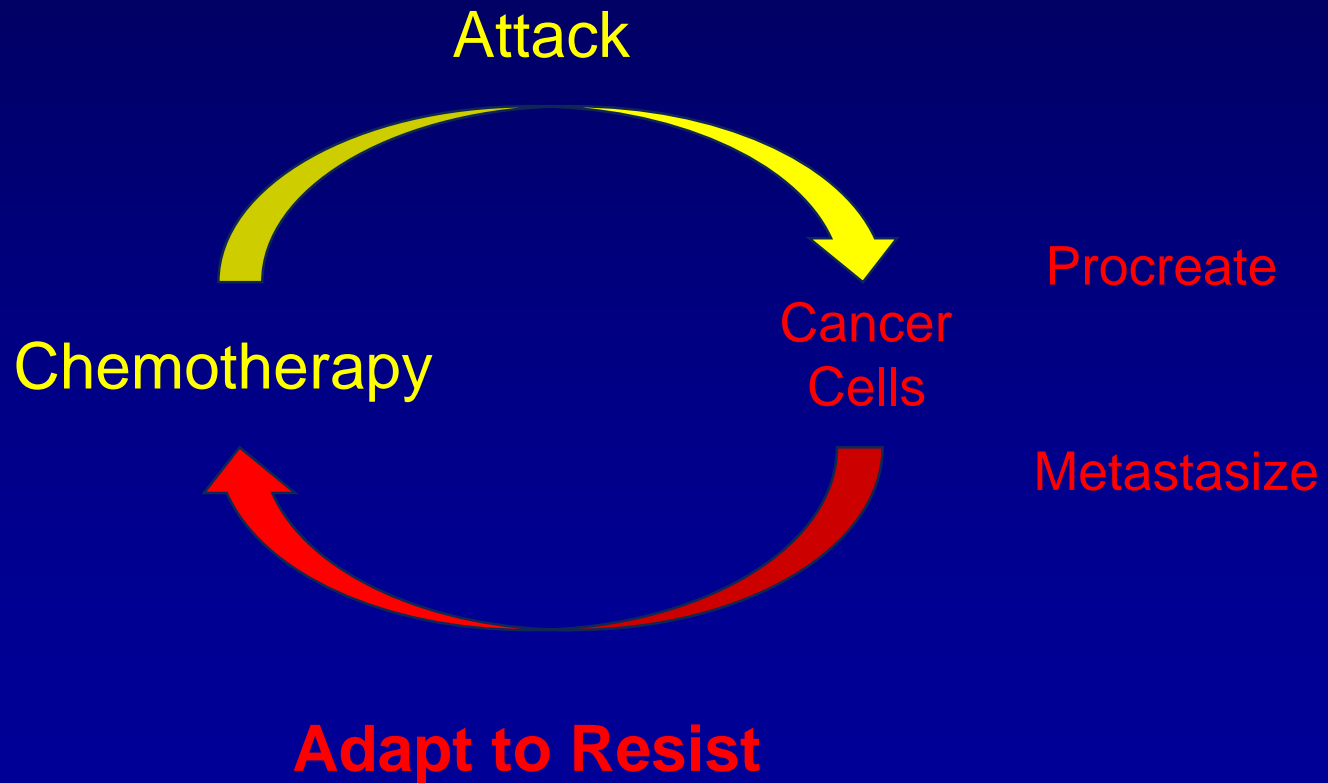
# 1. You can't see a cancer cell



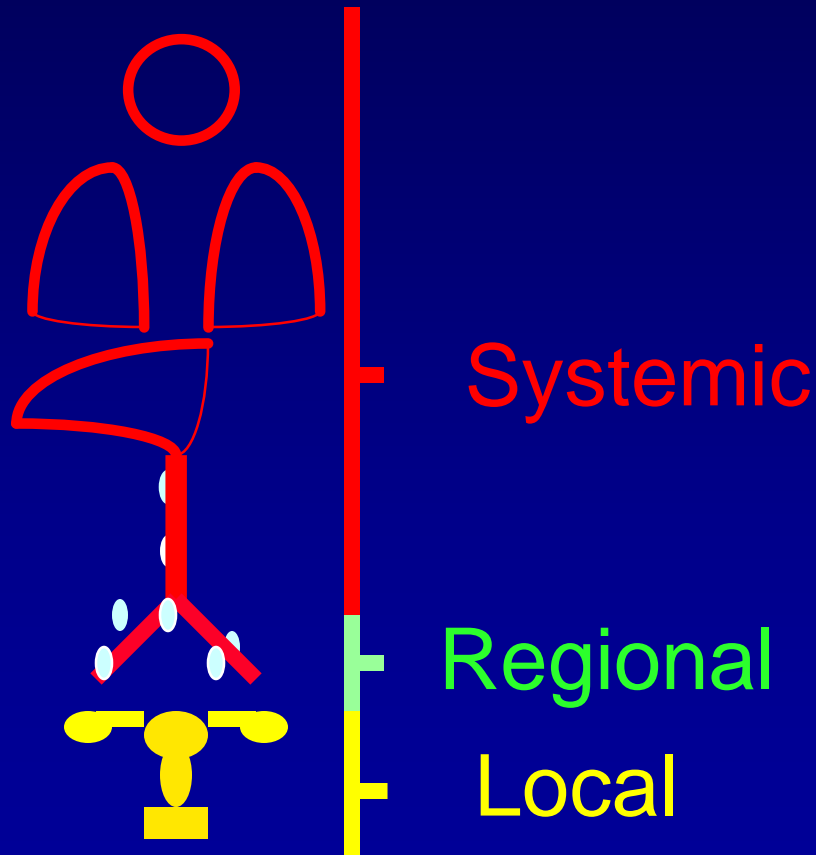
1 cm<sup>3</sup>

= 1 000 000 000 cells

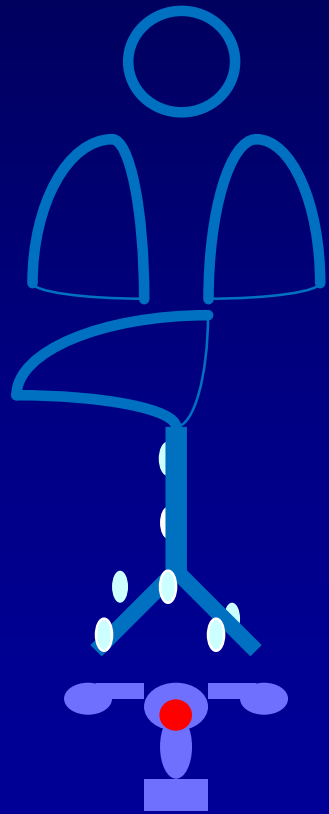
## 2. Chemotherapy → Chemotherapy resistance



### 3. Local disease is Curable, Systemic disease is Not



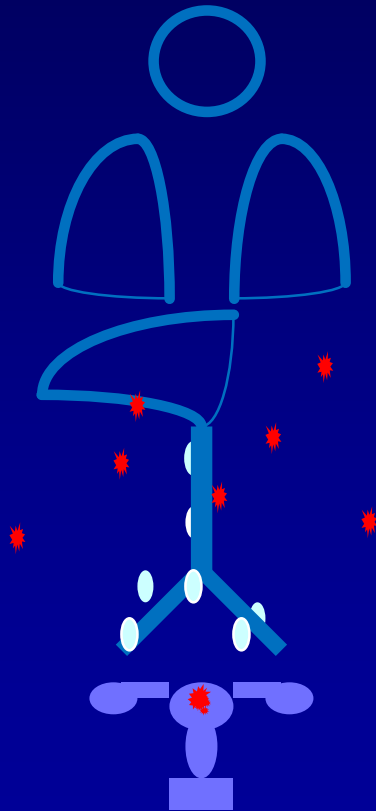
### 3. Local disease is Curable, Systemic disease is Not



Local Disease



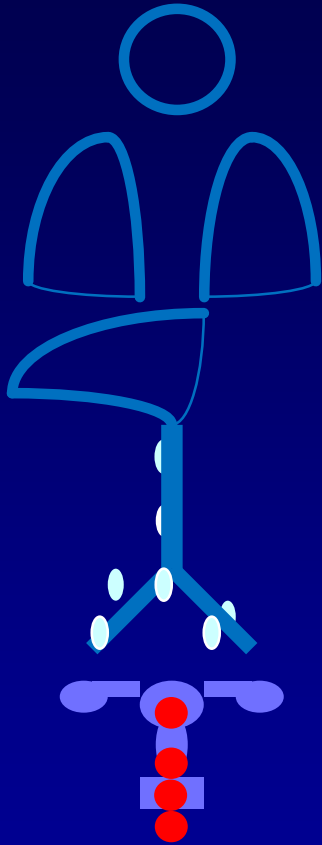
### 3. Local disease is Curable, Systemic disease is Not



Systemic disease

# 3. Local disease is Curable

(Vulva/Vagina/Cervix/Endometrial Cancer)



Initial Treatment → @ Progression / Persistence

Surgery



Radiation

Primary Radiation

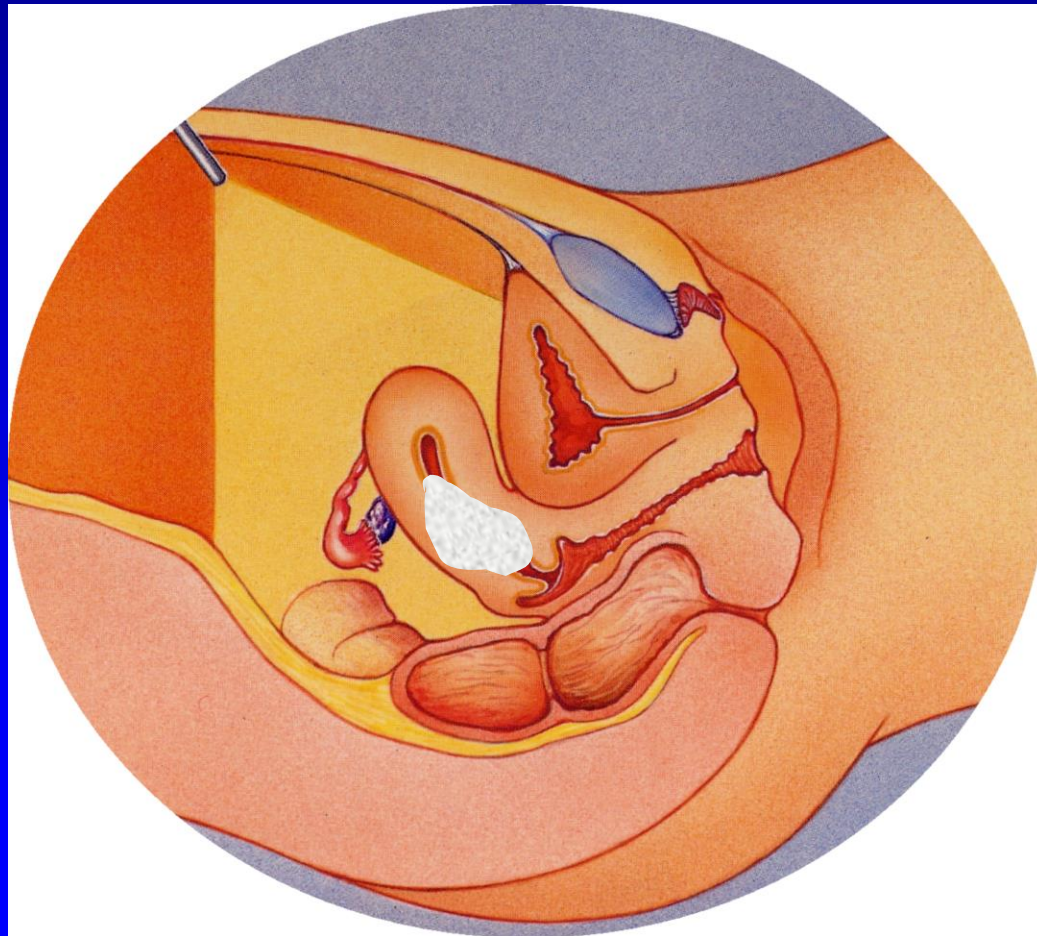


Surgery  
(Pelvic exenteration)

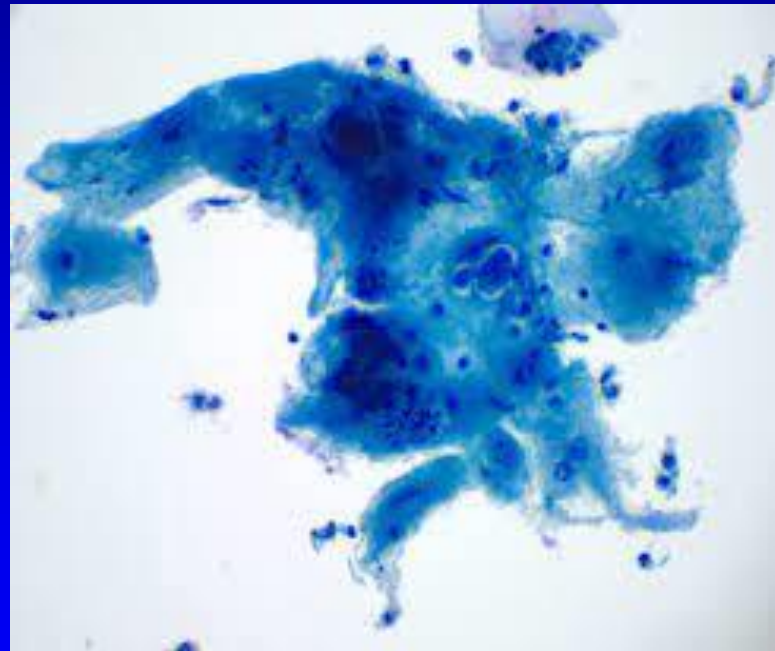
## 4. Pap Smears screen for dysplasia (not cancer)



## 4. Pap Smears screen for dysplasia (not cancer)



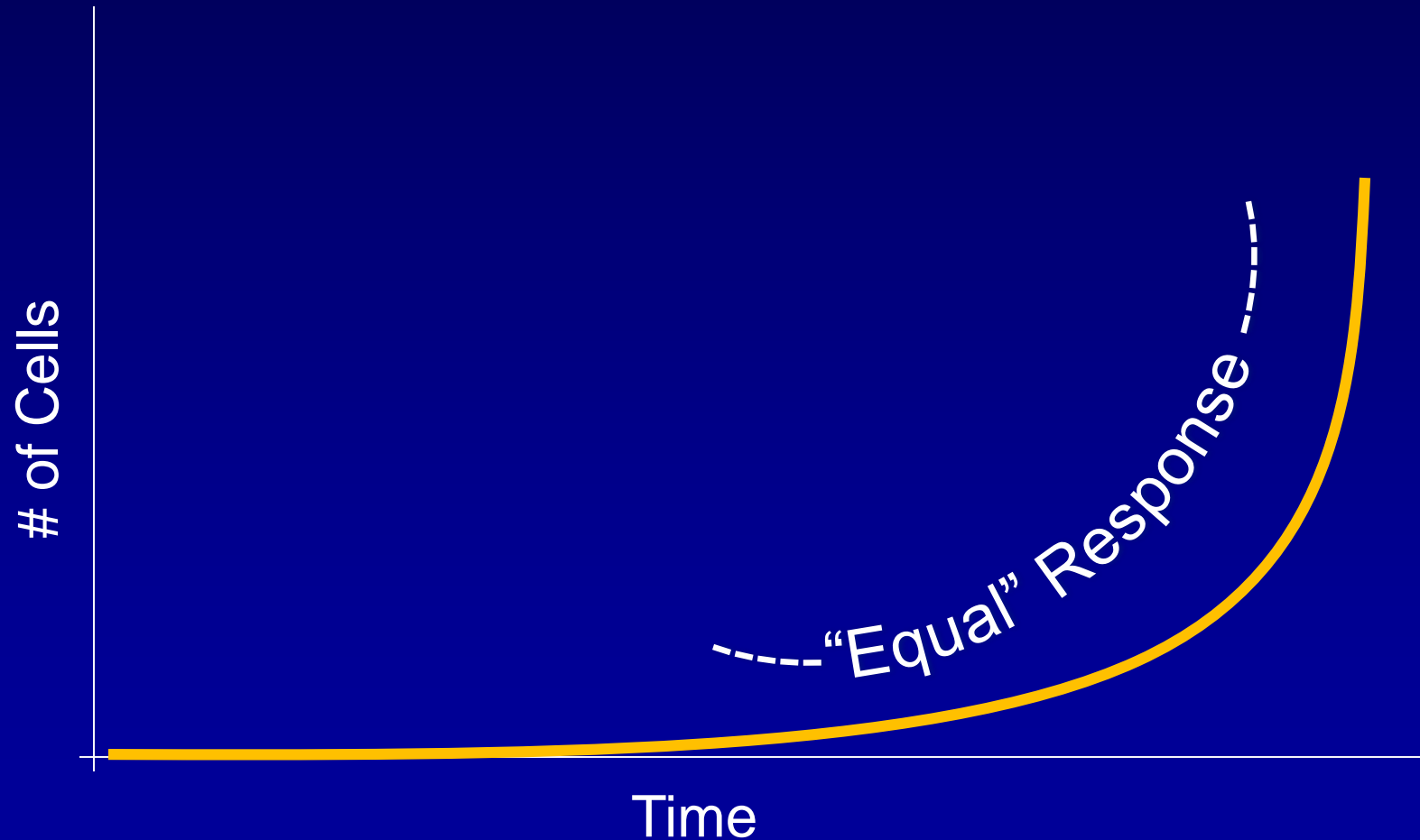
## 4. Pap Smears screen for dysplasia (not cancer)



## 5. Vaginal stenosis is common and prohibitive



## 6. Chemotherapy Works or it Doesn't



# Summary

1. You can't see a cancer cell.
2. Chemotherapy exposure can promote chemotherapy resistance
3. Local disease is curable systemic disease is not
4. Pap smears screen for dysplasia, not invasive cancer
5. Vaginal stenosis is common and can be prohibitive to examinations
6. Chemotherapy either works or it doesn't work



# Outline

1. Review basic facts pertaining to principles of (gynecologic) oncology

2. Discuss how to apply

1. Cervical / vaginal cytology

2. Imaging

3. Tumor markers

in the follow-up of patients with gynecologic cancer

# Outline

1. Review basic facts pertaining to principles of (gynecologic) oncology

2. Discuss how to apply

1. Cervical / vaginal cytology

2. Imaging

3. Tumor markers

in the follow-up of patients with gynecologic cancer

# Outline

1. Review basic facts pertaining to principles of (gynecologic) oncology

2. Discuss how to apply

1. Cervical / vaginal cytology

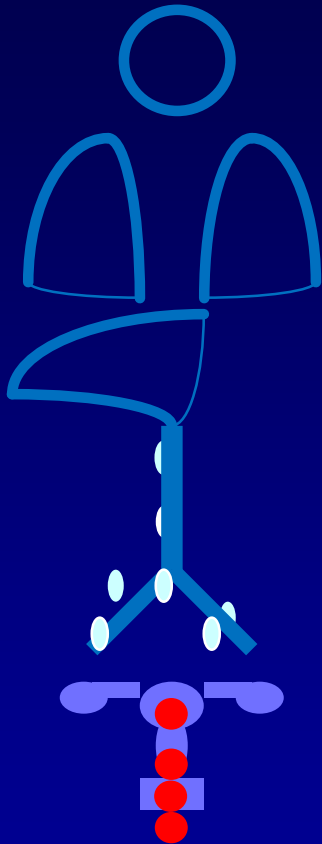
2. Imaging

3. Tumor markers

in the follow-up of patients with gynecologic cancer

# Use of Vaginal/Cervical Cytology

Vagina/Cervix/Endometrial Cancer)



Initial Treatment → @ Progression / Persistence

Surgery



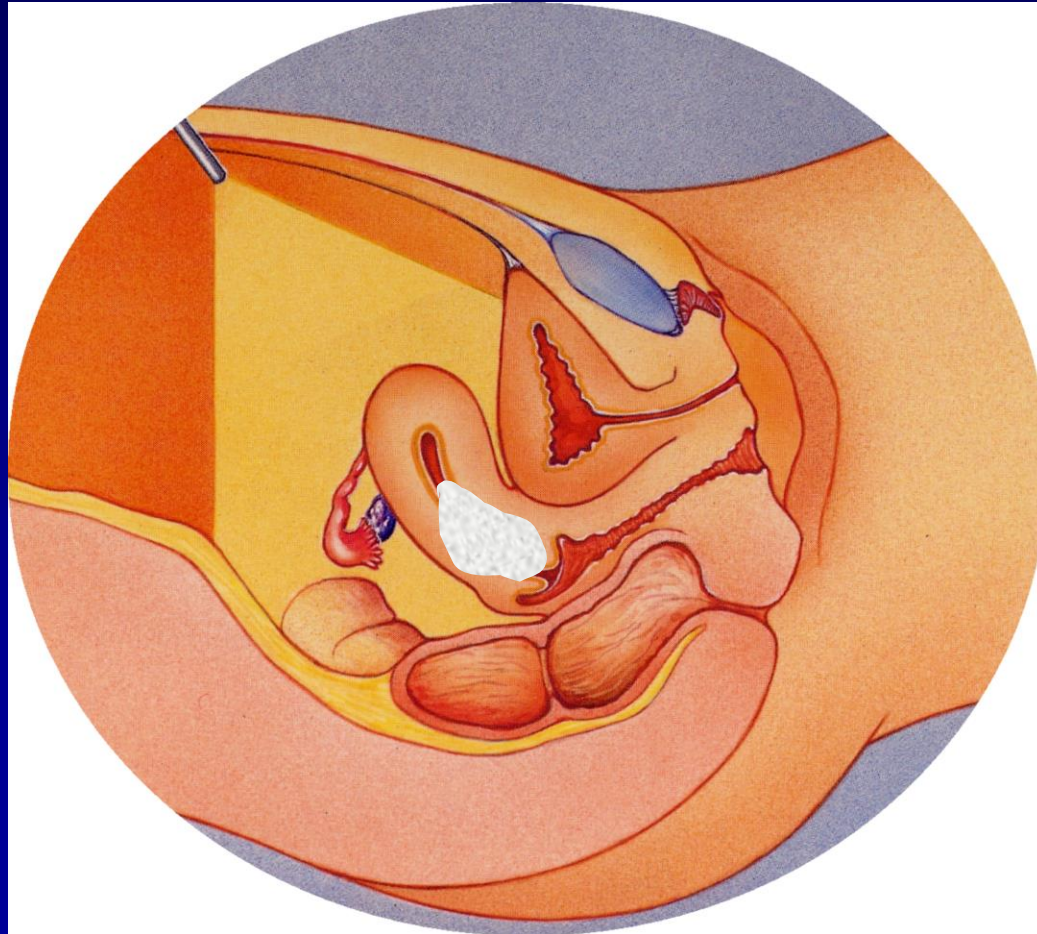
Radiation

Primary Radiation



Surgery  
(Pelvic exenteration)

# Use of Vaginal/Cervical Cytology



# (Non) use of Vaginal/Cervical Cytology



# Outline

1. Review basic facts pertaining to principles of (gynecologic) oncology

2. Discuss how to apply

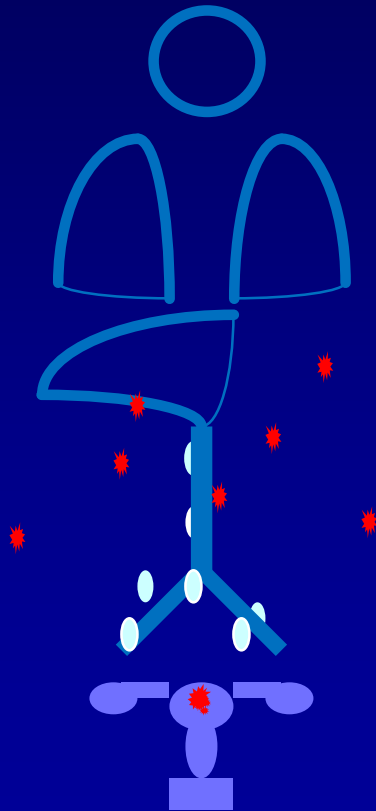
1. Cervical / vaginal cytology

2. Imaging

3. Tumor markers

in the follow-up of patients with gynecologic cancer

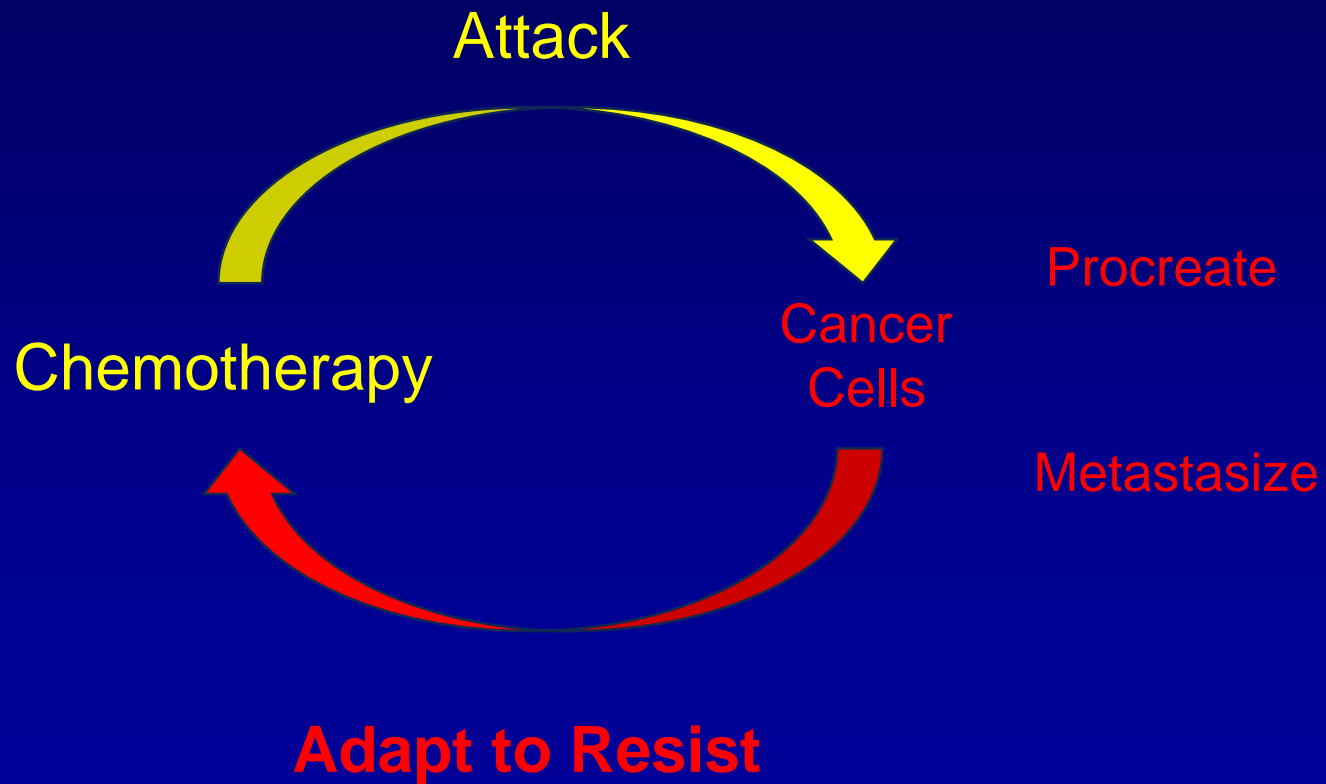
# Using Imaging and Tumor Markers



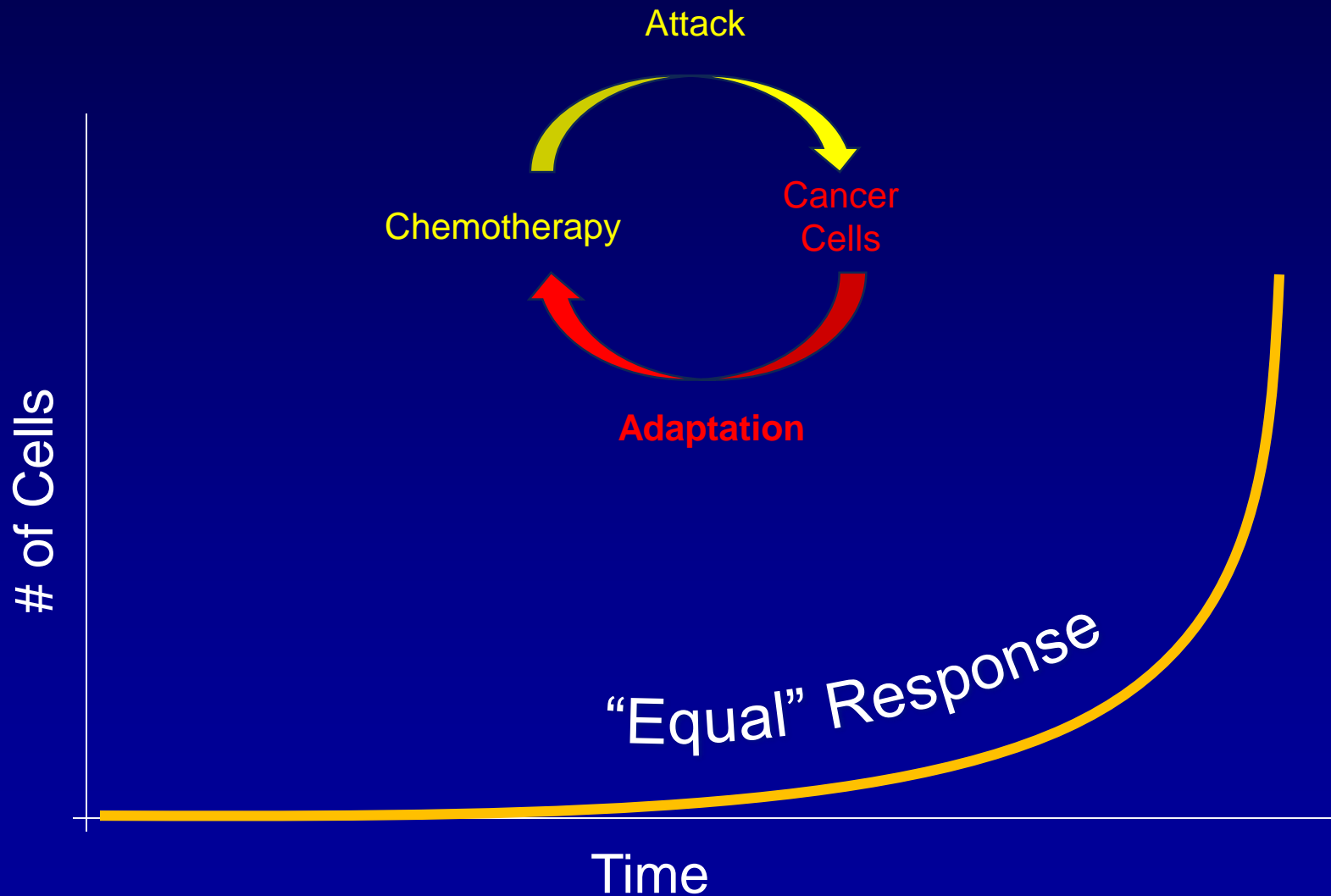
Systemic disease



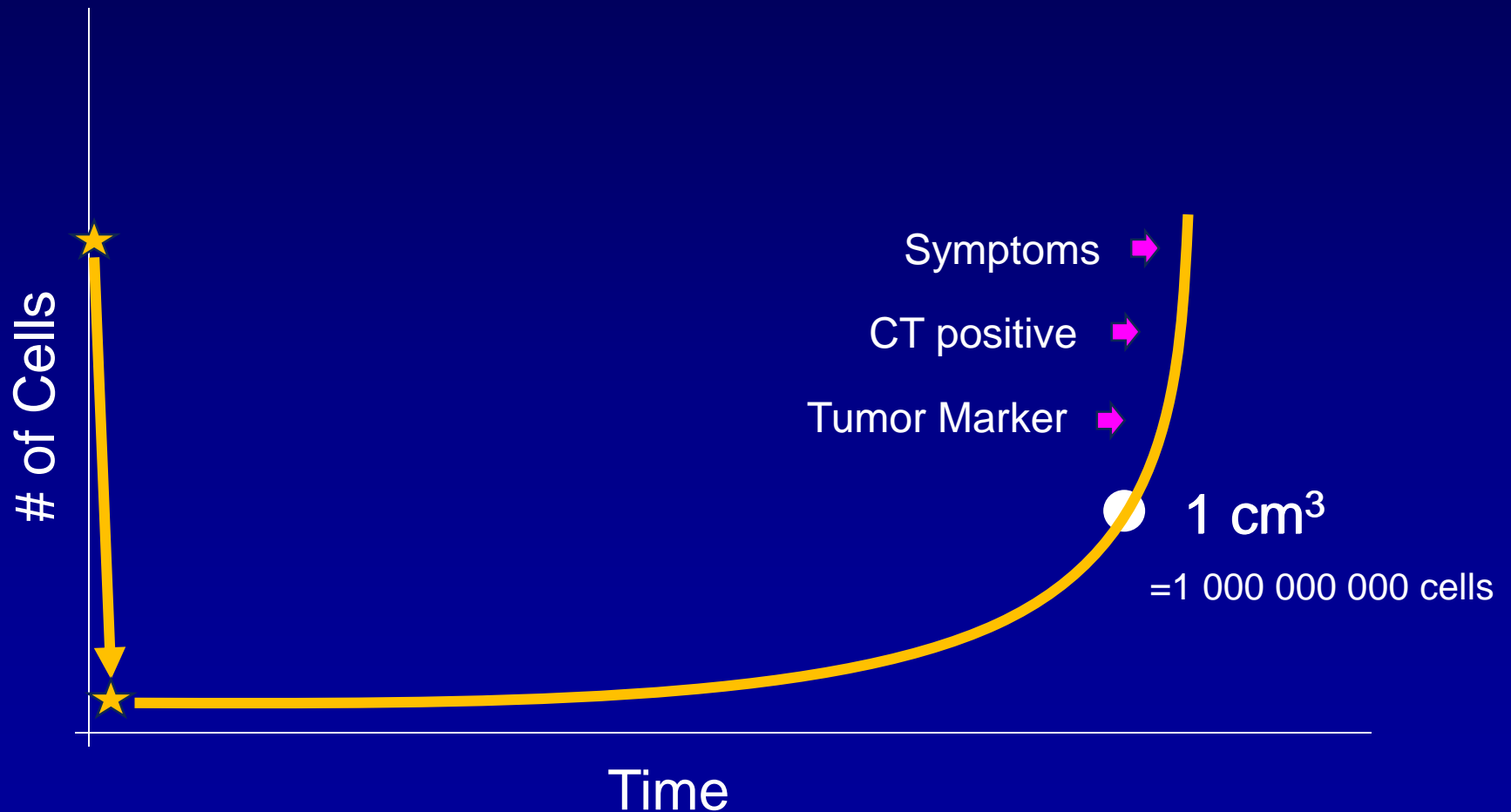
# Using Imaging and Tumor Markers



# Using Imaging and Tumor Markers



# (Not) Using Imaging and Tumor Markers



# Why follow-up for patients with Gyn Malignancy is extremely important...



# Goal

To illustrate why follow-up for patients with Gyn Malignancy is extremely important

# Ideally:

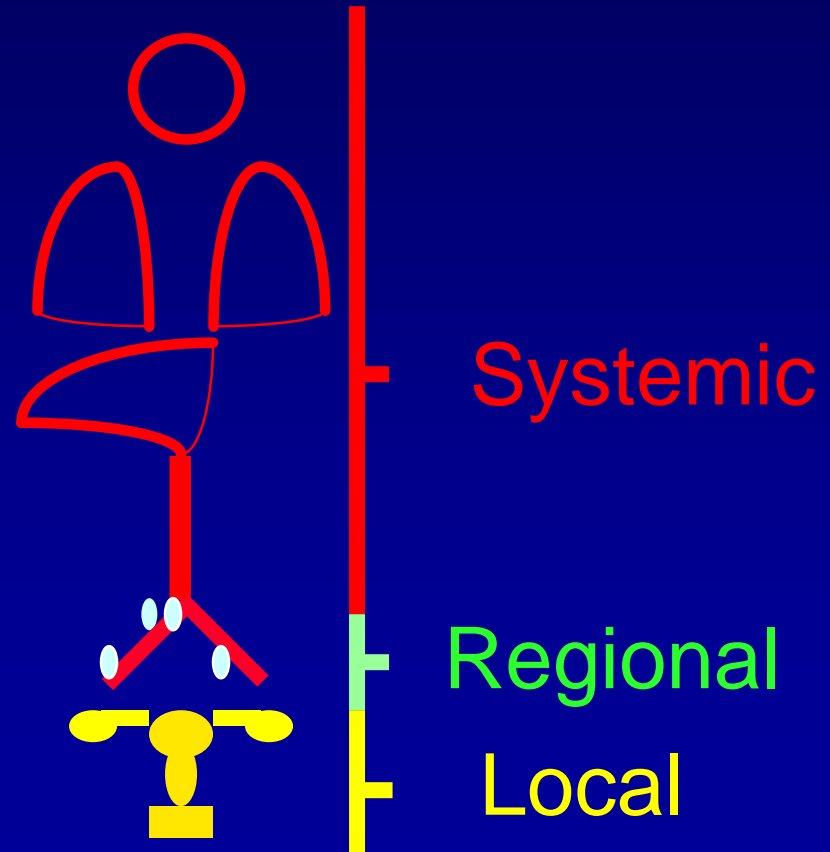
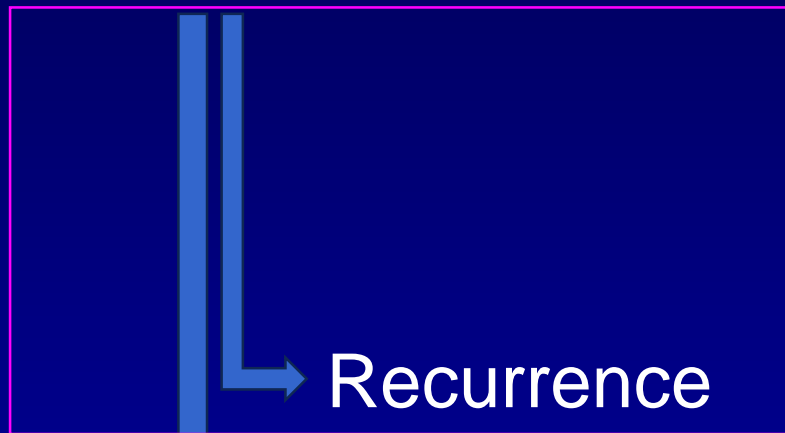
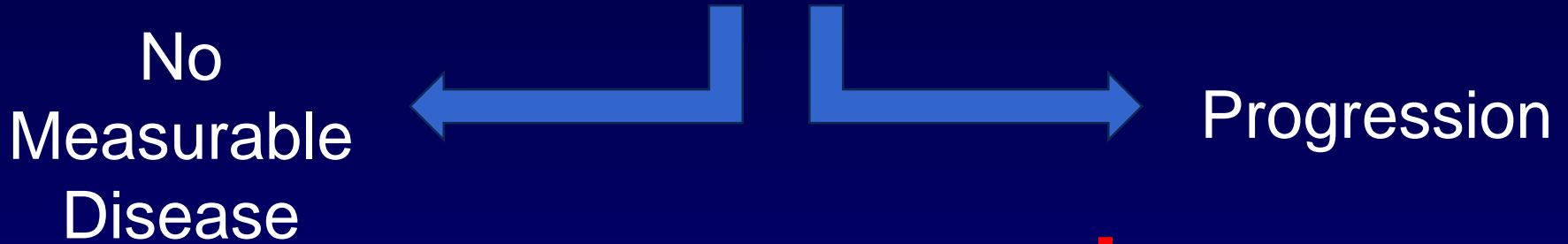
- Sufficient time with each patient
- Multi-disciplinary support (SW)
- Family Members invited
- Proper environment

# Post treatment follow-up for patients with Gynecologic Cancer

Akira Sugimoto

MD

# Surgery-Chemotherapy-Radiation







**Despair**

**Hope**



**Optimism**

**Realism**



**Replace despair  
with...**

**Acknowledge  
& sharing the pain**

