

News Release

COVID-19 Assessment Centre Opening at Ouellette Campus of Windsor Regional Hospital on Monday March 16, 2020

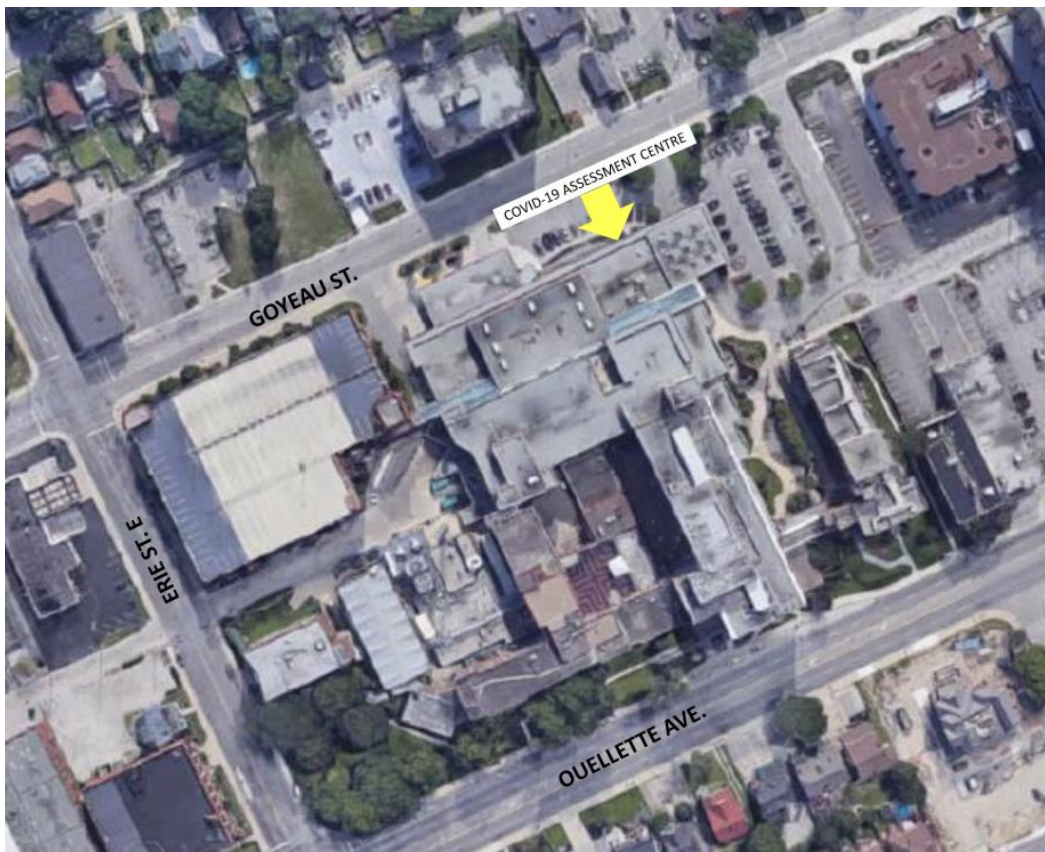
For Immediate Release

March 14, 2020 | Windsor and Essex County

Windsor Regional Hospital, in discussion with the Windsor-Essex County Health Unit (WECHU), has been approved by Ontario Health, West Region to open a COVID-19 Assessment Centre at its Ouellette campus starting Monday, March 16, 2020. The hours of operation will be between 9 AM and 4 PM, seven days a week, and expanded based on demand.

The COVID-19 Assessment Centre is located at the former outpatient clinic entrance (off Goyeau St.). It is a segregated area next to the Ouellette campus emergency department. There will be no access into the main hospital from this area or access into the COVID-19 Assessment Centre from the main hospital. All access will be from the entrance off of Goyeau Street.

OUELLETTE CAMPUS COVID-19 – ASSESSMENT CENTRE



The goal of the COVID-19 Assessment Centre is to build community capacity to respond to individuals experiencing symptoms which could be caused by COVID-19 in Windsor and Essex County. The Centre will support that emergency department services can be directed to those who are most vulnerable and require acute care hospital services.



“These measures are being implemented as a part of our collective best effort to limit the potential transmission of the COVID-19 virus from person to person,” said David Musyj, President and CEO, Windsor Regional Hospital. “They are taking effect to protect you, and your loved ones, whether they are our patients, our visitors, or our staff.”

The Ontario Ministry of Health has revised the COVID-19 case definition to clarify who should be tested. The Ministry is asking all providers not to test asymptomatic individuals.

“As we have communicated previously, if you are ill with a respiratory infection, DO NOT come to hospital where you may risk transmitting this virus to another individual,” Musyj said. “If you are unsure whether you have contracted the COVID-19 virus, contact by phone your primary care provider, the WECHU 519-258-2146 ext. 1420, or call Telehealth at 1-866-797-0000 (24 hours, seven days a week).”

Attending the COVID-19 Assessment Centre does NOT mean you will be automatically tested for COVID-19. The clinical team will conduct a health assessment, provide an examination, and determine if you meet the clinical case definition for testing.

You should still call your primary care provider, the Windsor-Essex County Health Unit (WECHU) at 519-258-2146 ext. 1420, or Telehealth at 1-866-797-0000 if you have any questions regarding COVID-19 and whether you should attend the COVID-19 Assessment Centre.

Only individuals who meet certain criteria will be tested for COVID-19. The test is similar to that of other respiratory illnesses and involves taking a sample from the back of the nasal cavity with a swab. The Windsor-Essex County Health Unit will follow up with all individuals who have been tested for COVID-19.

The WECHU will continue to update the public regarding any changes to the status of COVID-19 in our community.

PLEASE NOTE: People who do not have symptoms should not visit the COVID-19 Assessment Centre. If you have travelled from anywhere outside of Canada, please monitor your health for symptoms of COVID-19 for 14 days after you arrive back in Canada. If you develop symptoms, please self-isolate and contact the WECHU at 519-258-2146 ext. 1420.

Media Contact

Communications Department
Windsor-Essex County Health Unit
519-258-2146 ext. 6397 (NEWS)
news@wechu.org

Steve Erwin
Manager, Corporate Communications, Government and Community Relations
Windsor Regional Hospital
519-564-4902
steve.erwin@wrh.on.ca