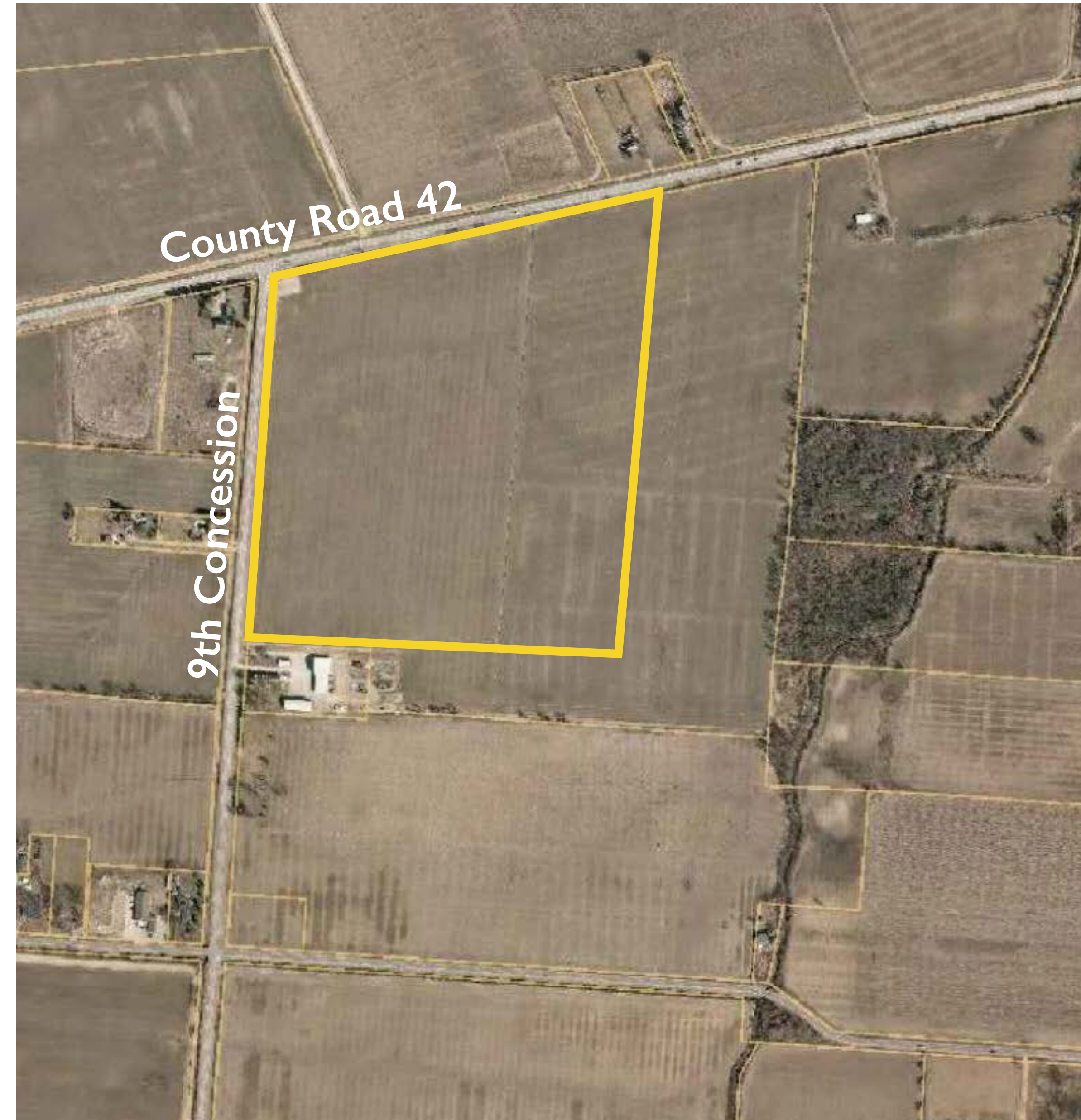


New Single-Site Acute Care Hospital

60 acre property at the southeast corner of County Road 42 and 9th Concession, Windsor, Ontario

THE PLAN:

- ▶ Construction of a new 1.6 million square foot, 10-storey, Acute-Care Hospital
- ▶ The state-of-the-art Hospital will include Emergency/Trauma Services, Cancer Centre, Obstetrics, Paediatrics, Regional Cardiac Services Critical Care, Inpatient Units, Surgical Services and Outpatient Clinics
- ▶ The Hospital will have nearly 500 beds on opening day with the capacity to increase to meet projected needs
- ▶ Windsor Regional Hospital will be responsible for all services at this site



Benefits to Patients and Community:

- ▶ Modern design will give patients and their families more privacy, comfort and control
- ▶ Improved infection control with 80% single-patient rooms and a modern ventilation system
- ▶ Increased capacity to support our partners in education – including the Schulich School of Medicine and Dentistry, Windsor Program – and enhance research and clinical trials
- ▶ Modern infrastructure will strengthen the ability to recruit and retain top physicians, dentists and midwives along with frontline staff and medical leaders



The Site is:

- ▶ Large enough to meet MoHLTC planning guidelines which suggest 50 acres or more
- ▶ Ideally shaped offering multiple possibilities for building which enhances accessibility and future building opportunities
- ▶ Has two access roads offering easy access for transit vehicles, emergency services, patient drop-off/pick-up, staff and visitors
- ▶ Visible from access roads
- ▶ Able to safely accommodate a helipad in compliance with Transport Canada requirements
- ▶ Located near required site services (water, electricity and natural gas)
- ▶ A Greenfield (no trees to take down, no heritage issues, no wetlands) which allows for easy and immediate development

Site Details

- ▶ 60 acres of land offers room to develop and grow over time to meet community's needs
- ▶ Ideally located near major access roads and all major highways
- ▶ Located near an existing Transit Windsor Route with opportunities to tie directly into the system
- ▶ Located within a 10 minute drive from a majority of our patients and staff



The New Single-Site Acute Care Hospital will be:

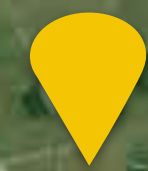
Accessible to Patients

* **70%**

live within 12 km of the New Single-Site
Acute Care Hospital

* percentage of current inpatients

The New Single-Site Acute Care Hospital will be:



Accessible to Emergency Department Visitors

*** 76%**

**of Emergency Department visitors live
within 12 km of the New Single-Site
Acute Care Hospital**

*percentage of those who visited WRH Emergency Departments in the past year

The New Single-Site Acute Care Hospital will be:

Accessible to Employees

60%

live within 10 km of the New Single-Site
Acute Care Hospital

The New Single-Site Acute Care Hospital will be:



Accessible to Professional Staff
(Physicians, Dentists, Midwives)

67%

**live within 10 km of the New Single-Site
Acute Care Hospital**

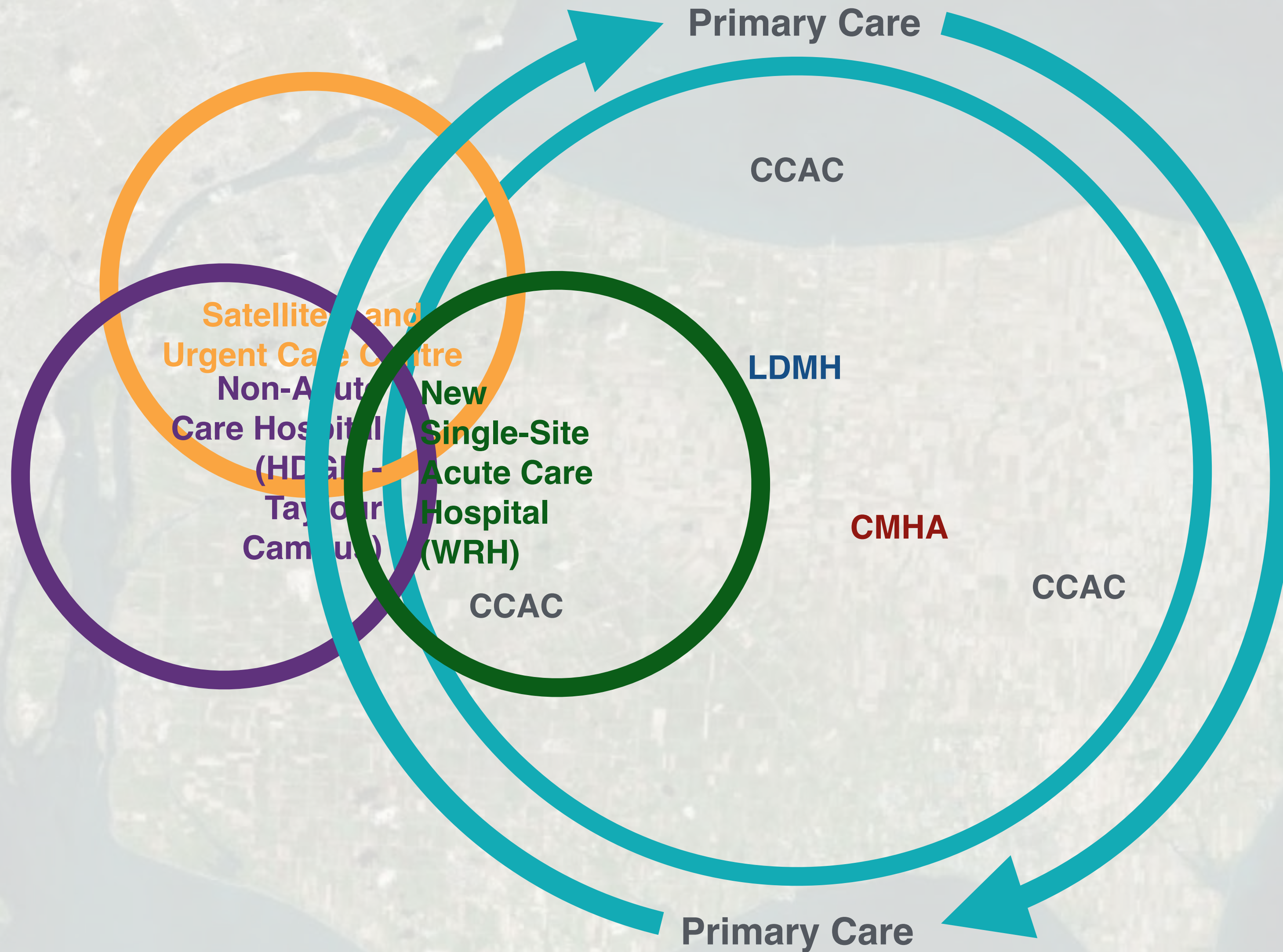
The New Single-Site Acute Care Hospital will be:



Accessible to Medical Offices

84%

of WRH professional staff members
have offices within 10 km of the New
Single-Site Acute Care Hospital



“

“As a family that required care in the hospital, I see a need to enhance services in the future with the building of a new state-of-the-art hospital and system that will meet the needs of families of Windsor-Essex.”

- Leroy Gray

Member of Patient and Caregiver Council



The Site:

- ▶ Falls within the future employment lands and future urban area designation of the official city plan
- ▶ Has been planned for institutional and large scale developments
- ▶ Is within a larger area that is planned to accommodate future residents within planned residential neighbourhoods



The Site:

- ▶ Is located on County Rd. 42 which is a major transportation and transit route
- ▶ Is adjacent to the future Lauzon Parkway extension and interchange at Highway 401 and Highway #3
- ▶ Parallels the Little River Natural Lands Corridor, which is planned for multi-use trails that will expand the City's Greenway System





www.windsorhospitals.ca